

For Research Use Only

# ECM1 Monoclonal antibody, PBS Only (Detector)

Catalog Number: 66023-1-PBS



## Basic Information

<b>Catalog Number:</b> 66023-1-PBS	<b>GenBank Accession Number:</b> BC023505	<b>Purification Method:</b> Protein A purification
<b>Size:</b> 100ug , Concentration: 1mg/ml by Nanodrop;	<b>GeneID (NCBI):</b> 1893	<b>CloneNo.:</b> 6A12B3
<b>Source:</b> Mouse	<b>UNIPROT ID:</b> Q16610	
<b>Isotype:</b> IgG2a	<b>Full Name:</b> extracellular matrix protein 1	
<b>Immunogen Catalog Number:</b> AG17955	<b>Calculated MW:</b> 540 aa, 61 kDa	
	<b>Observed MW:</b> 61 kDa	

## Applications

**Tested Applications:**  
WB, IHC, Sandwich ELISA, Indirect ELISA, Sample test

**Species Specificity:**  
human

## Product Information

66023-1-PBS targets ECM1 as part of a matched antibody pair:

MP50074-1: 68472-1-PBS capture and 66023-1-PBS detection (validated in Sandwich ELISA)

Unconjugated mouse monoclonal antibody pair in PBS only (BSA and azide free) storage buffer at a concentration of 1 mg/mL, ready for conjugation.

This conjugation ready format makes antibodies ideal for use in many applications including: ELISAs, multiplex assays requiring matched pairs, mass cytometry, and multiplex imaging applications. Antibody use should be optimized by the end user for each application and assay.

## Background Information

Extracellular matrix protein 1 (ECM1) is a glycoprotein involved in a number of biological processes such as bone formation, skin differentiation, cell proliferation, and promotes angiostasis. Pathologically, ECM1 contributes to the formation and metastasis of several types of cancer including breast, thyroid and hepatocellular cancers. (21128013) It inhibits MMP9 proteolytic activity.

## Storage

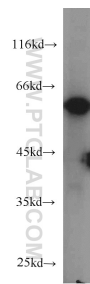
**Storage:**  
Store at -80°C.

**Storage Buffer:**  
PBS only, pH7.3

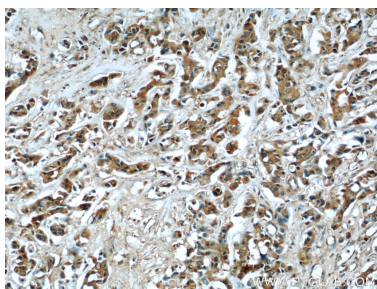
For technical support and original validation data for this product please contact:  
T: 1 (888) 4PTGLAB (1-888-478-4522) (toll free in USA), or 1(312) 455-8498 (outside USA)  
E: [proteintech@ptglab.com](mailto:proteintech@ptglab.com)  
W: [ptglab.com](http://ptglab.com)

This product is exclusively available under Proteintech Group brand and is not available to purchase from any other manufacturer.

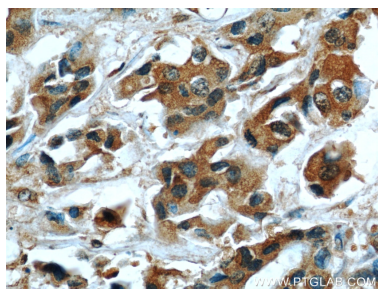
Selected Validation Data



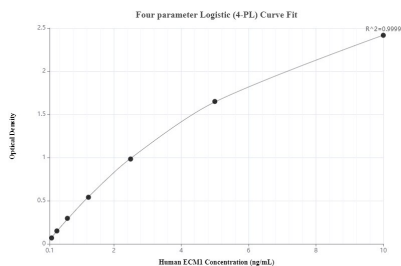
MCF7 cells were subjected to SDS PAGE followed by western blot with 66023-1-Ig (ECM1 antibody) at dilution of 1:500 incubated at room temperature for 1.5 hours. This data was developed using the same antibody clone with 66023-1-PBS in a different storage buffer formulation.



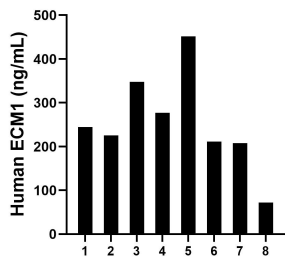
Immunohistochemical analysis of paraffin-embedded human breast cancer using 66023-1-Ig(ECM1 antibody) at dilution of 1:50 (under 10x lens). This data was developed using the same antibody clone with 66023-1-PBS in a different storage buffer formulation.



Immunohistochemical analysis of paraffin-embedded human breast cancer using 66023-1-Ig(ECM1 antibody) at dilution of 1:50 (under 40x lens). This data was developed using the same antibody clone with 66023-1-PBS in a different storage buffer formulation.



Sandwich ELISA standard curve of MP50074-1, ECM1 Monoclonal Matched Antibody Pair, PBS Only. Capture antibody: 68472-1-PBS. Detection antibody: 66023-1-PBS. Standard: Eg0533. Range: 0.156-10 ng/mL



Serum of eight individual healthy human donors was measured. The human ECM1 concentration of detected samples was determined to be 254.48 ng/mL with a range of 71.72 - 451.84 ng/mL