

For Research Use Only

MCL1 Monoclonal antibody

Catalog Number: 66026-1-Ig

Featured Product

18 Publications



Basic Information

Catalog Number:

66026-1-Ig

Size:

150ul, Concentration: 1400 ug/ml by Nanodrop and 1207 ug/ml by Bradford method using BSA as the standard;

Source:

Mouse

Isotype:

IgG2b

Immunogen Catalog Number:

AG10609

GenBank Accession Number:

BC107735

GeneID (NCBI):

4170

UNIPROT ID:

Q07820

Full Name:

myeloid cell leukemia sequence 1 (BCL2-related)

Calculated MW:

350 aa, 37 kDa

Purification Method:

Protein A purification

CloneNo.:

1E3C2

Recommended Dilutions:

WB 1:2000-1:10000

IHC 1:250-1:1000

IF/ICC 1:200-1:800

Applications

Tested Applications:

WB, IHC, IF/ICC, ELISA

Cited Applications:

WB, IP, IHC, CoIP

Species Specificity:

human

Cited Species:

human, rat, mouse

Note-IHC: suggested antigen retrieval with TE buffer pH 9.0; (*) Alternatively, antigen retrieval may be performed with citrate buffer pH 6.0

Positive Controls:

WB : HeLa cells, A431 cells, A549 cells, Jurkat cells, Raji cells, Ramos cells, Daudi cells

IHC : human breast cancer tissue,

IF/ICC : HeLa cells, MCF-7 cells

Background Information

MCL-1 is an anti-apoptotic member of the Bcl-2 family originally isolated from the ML-1 human myeloid leukemia cell line. Similar to BCL2 and BCL2L1, MCL1 can interact with BAX and/or BAK1 to inhibit mitochondria-mediated apoptosis. Mcl-1 is critical for the proliferation and survival of myeloma cells in vitro, and overexpression of Mcl-1 protein in myeloma cells is associated with relapse and short event-free survival in multiple myeloma patients. Recent studies show that MCL-1 is upregulated in numerous haematological and solid tumour malignancies. Therefore, MCL-1 has been suggested as a potential new therapeutic target.

Notable Publications

Author	Pubmed ID	Journal	Application
Chan Yang	36232694	Int J Mol Sci	WB
Yingyan Han	31423895	Epigenetics	WB
Yongzhong Gu	31753743	Reprod Biol	WB

Storage

Storage:

Store at -20°C. Stable for one year after shipment.

Storage Buffer:

PBS with 0.02% sodium azide and 50% glycerol pH 7.3.

Aliquoting is unnecessary for -20°C storage

*** 20ul sizes contain 0.1% BSA

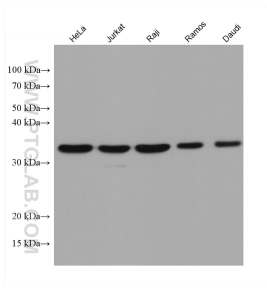
For technical support and original validation data for this product please contact:

T: 1 (888) 4PTGLAB (1-888-478-4522) (toll free in USA), or 1(312) 455-8498 (outside USA)

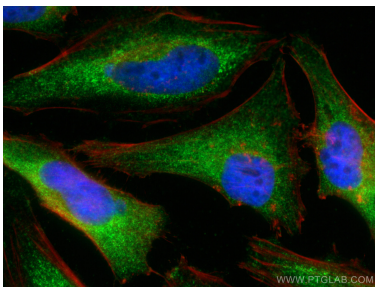
E: proteintech@ptglab.com
W: ptglab.com

This product is exclusively available under Proteintech Group brand and is not available to purchase from any other manufacturer.

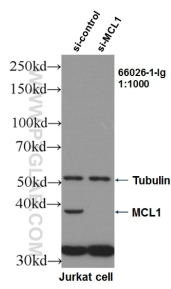
Selected Validation Data



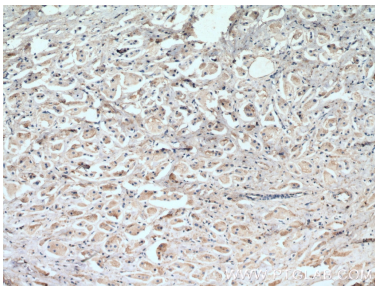
Various lysates were subjected to SDS PAGE followed by western blot with 66026-1-Ig (MCL1 antibody) at dilution of 1:5000 incubated at room temperature for 1.5 hours.



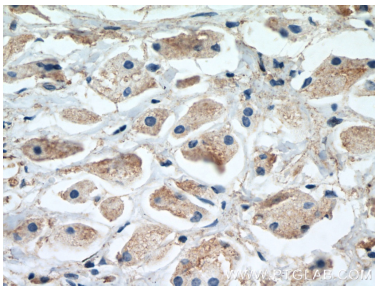
Immunofluorescent analysis of (4% PFA) fixed HeLa cells using MCL1 antibody (66026-1-Ig, Clone: 1E3C2) at dilution of 1:400 and CoraLite®488-Conjugated AffiniPure Goat Anti-Mouse IgG(H+L), CL594-Phalloidin (red).



WB result of MCL1 antibody (66026-1-Ig, 1:1000) with si-Control and si-MCL1 transfected Jurkat cells.



Immunohistochemical analysis of paraffin-embedded human breast cancer tissue slide using 66026-1-Ig (MCL1 antibody) at dilution of 1:500 (under 10x lens. Heat mediated antigen retrieval with Tris-EDTA buffer (pH 9.0).



Immunohistochemical analysis of paraffin-embedded human breast cancer tissue slide using 66026-1-Ig (MCL1 antibody) at dilution of 1:500 (under 40x lens. Heat mediated antigen retrieval with Tris-EDTA buffer (pH 9.0).