

For Research Use Only

Protein C inhibitor Monoclonal antibody



Catalog Number: 66030-1-Ig

Basic Information

Catalog Number: 66030-1-Ig	GenBank Accession Number: BC008915	Purification Method: Protein A purification
Size: 150ul , Concentration: 1600 µg/ml by Nanodrop and 1320 µg/ml by Bradford method using BSA as the standard;	GeneID (NCBI): 5104	CloneNo.: 2H6G2
Source: Mouse	Full Name: serpin peptidase inhibitor, clade A (alpha-1 antiproteinase, antitrypsin), member 5	Recommended Dilutions: WB 1:500-1:2000 IHC 1:50-1:500 IF 1:200-1:800
Isotype: IgG2a	Calculated MW: 46 kDa	
Immunogen Catalog Number: AG18094	Observed MW: 46 kDa	

Applications

Tested Applications:

IF, IHC, WB, ELISA

Species Specificity:

human

Note-IHC: suggested antigen retrieval with TE buffer pH 9.0; (*) Alternatively, antigen retrieval may be performed with citrate buffer pH 6.0

Positive Controls:

WB : Human testis, tissue

IHC : human ovary tumor tissue,

IF : human ovary tumor tissue,

Background Information

SERPINA5 (also called Protein C Inhibitor, PCI) is a serpin type of serine protease inhibitor that is found in many tissues and fluids in human, including blood plasma, seminal plasma and urine. PCI found in blood originates from the liver and is capable of inhibiting several serine proteases involved in the regulation of coagulation and fibrinolysis, including activated protein C, thrombin, factor Xa, various kallikreins and plasminogen activators. PCI has been found to have antimicrobial and antitumor properties and thus appears to be a multi-functional protein.

Storage

Storage:

Store at -20°C. Stable for one year after shipment.

Storage Buffer:

PBS with 0.02% sodium azide and 50% glycerol pH 7.3.

Aliquoting is unnecessary for -20°C storage

*** 20ul sizes contain 0.1% BSA

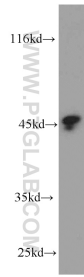
For technical support and original validation data for this product please contact:

T: 1 (888) 4PTGLAB (1-888-478-4522) (toll free in USA), or 1(312) 455-8498 (outside USA)

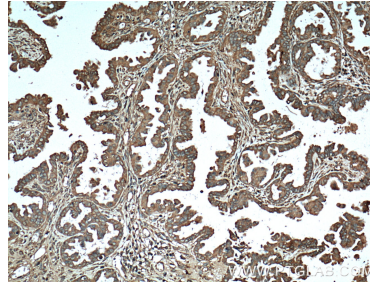
E: proteintech@ptglab.com
W: ptglab.com

This product is exclusively available under Proteintech Group brand and is not available to purchase from any other manufacturer.

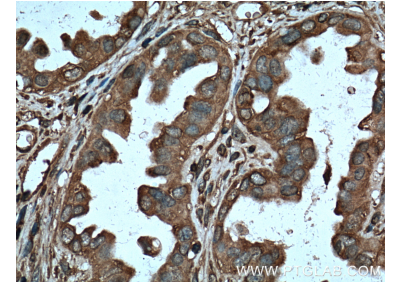
Selected Validation Data



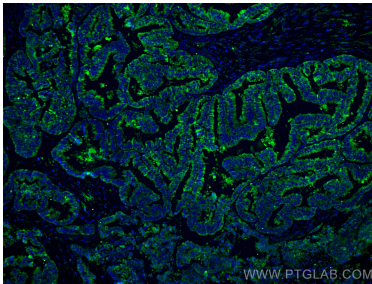
human testis tissue were subjected to SDS PAGE followed by western blot with 66030-1-Ig (Protein C inhibitor antibody) at dilution of 1:1000 incubated at room temperature for 1.5 hours.



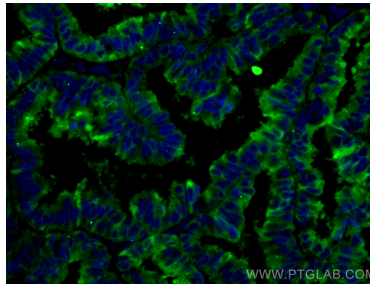
Immunohistochemical analysis of paraffin-embedded human ovary tumor tissue slide using 66030-1-Ig (Protein C inhibitor antibody at dilution of 1:200 (under 10x lens). Heat mediated antigen retrieval with Tris-EDTA buffer (pH 9.0).



Immunohistochemical analysis of paraffin-embedded human ovary tumor tissue slide using 66030-1-Ig (Protein C inhibitor antibody at dilution of 1:200 (under 40x lens). Heat mediated antigen retrieval with Tris-EDTA buffer (pH 9.0).



Immunofluorescent analysis of (4% PFA) fixed human ovary tumor tissue using Protein C inhibitor antibody (66030-1-Ig, Clone: 2H6G2) at dilution of 1:400 and CoraLite®488-Conjugated AffiniPure Goat Anti-Mouse IgG(H+L).



Immunofluorescent analysis of (4% PFA) fixed human ovary tumor tissue using Protein C inhibitor antibody (66030-1-Ig, Clone: 2H6G2) at dilution of 1:400 and CoraLite®488-Conjugated AffiniPure Goat Anti-Mouse IgG(H+L).