

For Research Use Only

Protein C inhibitor Monoclonal antibody, PBS Only



Catalog Number: 66030-1-PBS

Basic Information

Catalog Number: 66030-1-PBS	GenBank Accession Number: BC008915	Purification Method: Protein A purification
Size: 100ug , Concentration: 1 mg/ml by Nanodrop;	GeneID (NCBI): 5104	CloneNo.: 2H6G2
Source: Mouse	UNIPROT ID: P05154	
Isotype: IgG2a	Full Name: serpin peptidase inhibitor, clade A (alpha-1 antiproteinase, antitrypsin), member 5	
Immunogen Catalog Number: AG18094	Calculated MW: 46 kDa	
	Observed MW: 46 kDa	

Applications

Tested Applications:
WB, IF, IHC, Indirect ELISA

Species Specificity:
human

Background Information

SERPINA5 (also called Protein C Inhibitor, PCI) is a serpin type of serine protease inhibitor that is found in many tissues and fluids in human, including blood plasma, seminal plasma and urine. PCI found in blood originates from the liver and is capable of inhibiting several serine proteases involved in the regulation of coagulation and fibrinolysis, including activated protein C, thrombin, factor Xa, various kallikreins and plasminogen activators. PCI has been found to have antimicrobial and antitumor properties and thus appears to be a multi-functional protein.

Storage

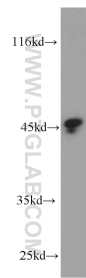
Storage:
Store at -80°C.

Storage Buffer:
PBS Only

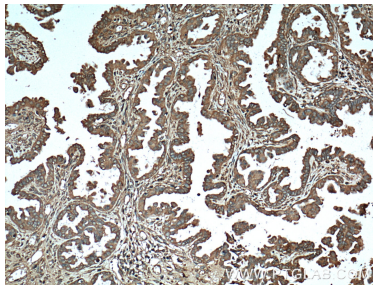
For technical support and original validation data for this product please contact:
T: 1 (888) 4PTGLAB (1-888-478-4522) (toll free in USA), or 1(312) 455-8498 (outside USA)
E: proteintech@ptglab.com
W: ptglab.com

This product is exclusively available under Proteintech Group brand and is not available to purchase from any other manufacturer.

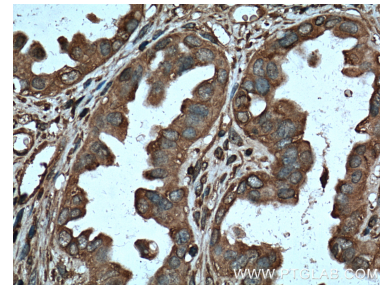
Selected Validation Data



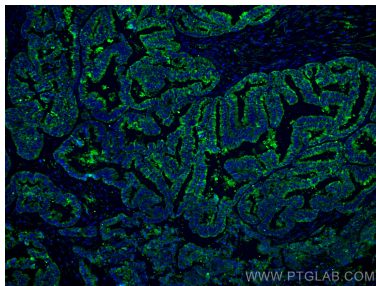
human testis tissue were subjected to SDS PAGE followed by western blot with 66030-1-Ig (Protein C inhibitor antibody) at dilution of 1:1000 incubated at room temperature for 1.5 hours. This data was developed using the same antibody clone with 66030-1-PBS in a different storage buffer formulation.



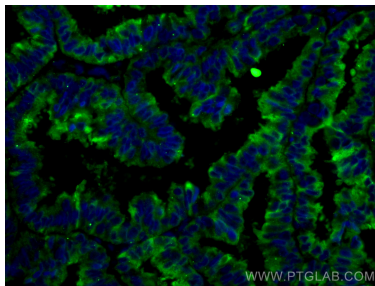
Immunohistochemical analysis of paraffin-embedded human ovary tumor tissue slide using 66030-1-Ig (Protein C inhibitor antibody at dilution of 1:200 (under 10x lens). Heat mediated antigen retrieval with Tris-EDTA buffer (pH 9.0). This data was developed using the same antibody clone with 66030-1-PBS in a different storage buffer formulation.



Immunohistochemical analysis of paraffin-embedded human ovary tumor tissue slide using 66030-1-Ig (Protein C inhibitor antibody at dilution of 1:200 (under 40x lens). Heat mediated antigen retrieval with Tris-EDTA buffer (pH 9.0). This data was developed using the same antibody clone with 66030-1-PBS in a different storage buffer formulation.



Immunofluorescent analysis of (4% PFA) fixed human ovary tumor tissue using Protein C inhibitor antibody (66030-1-Ig, Clone: 2H6G2) at dilution of 1:400 and CoraLite®488-Conjugated AffiniPure Goat Anti-Mouse IgG(H+L). This data was developed using the same antibody clone with 66030-1-PBS in a different storage buffer formulation.



Immunofluorescent analysis of (4% PFA) fixed human ovary tumor tissue using Protein C inhibitor antibody (66030-1-Ig, Clone: 2H6G2) at dilution of 1:400 and CoraLite®488-Conjugated AffiniPure Goat Anti-Mouse IgG(H+L). This data was developed using the same antibody clone with 66030-1-PBS in a different storage buffer formulation.