

For Research Use Only

Alpha Tubulin Monoclonal antibody, PBS Only



Catalog Number: 66031-1-PBS

Basic Information

Catalog Number: 66031-1-PBS	GenBank Accession Number: BC009314	Purification Method: Protein A purification
Size: 100ug , Concentration: 1 mg/ml by Nanodrop;	GeneID (NCBI): 10376	CloneNo.: 1E4C11
Source: Mouse	UNIPROT ID: P68363	
Isotype: IgG2b	Full Name: tubulin, alpha 1b	
Immunogen Catalog Number: AG18034	Calculated MW: 50 kDa	
	Observed MW: 50-55 kDa	

Applications

Tested Applications:
WB, IP, IF, FC, IHC, ELISA

Species Specificity:
human, mouse, rat, Canine

Background Information

There are five tubulins in human cells: alpha, beta, gamma, delta, and epsilon. Tubulins are conserved across species. They form heterodimers, which multimerize to form a microtubule filament. An alpha and beta tubulin heterodimer is the basic structural unit of microtubules. The heterodimer does not come apart once formed. The alpha and beta tubulins, which are each about 55 kDa MW, are homologous but not identical. Alpha tubulin is useful for scientists across fields as an internal control due to its high, ubiquitous expression pattern. Tubulin expression may vary according to resistance to antimicrobial and antimetabolic drugs. This antibody specifically recognizes Tubulin Alpha.

Storage

Storage:
Store at -20°C. Stable for one year after shipment.

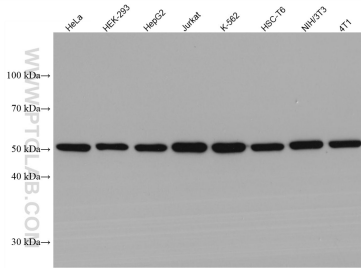
Storage Buffer:
PBS only

Aliquoting is unnecessary for -20°C storage

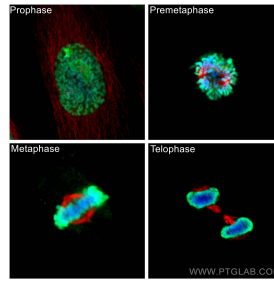
For technical support and original validation data for this product please contact:
T: 1 (888) 4PTGLAB (1-888-478-4522) (toll free in USA), or 1(312) 455-8498 (outside USA)
E: proteintech@ptglab.com
W: ptglab.com

This product is exclusively available under Proteintech Group brand and is not available to purchase from any other manufacturer.

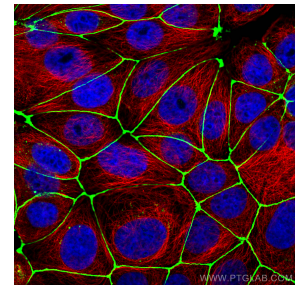
Selected Validation Data



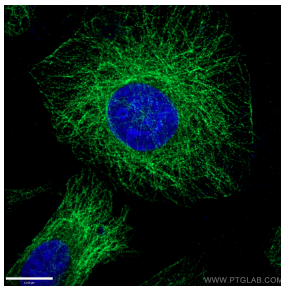
Various lysates were subjected to SDS PAGE followed by western blot with 66031-1-Ig (Alpha Tubulin antibody) at dilution of 1:200000 incubated at room temperature for 1.5 hours. This data was developed using the same antibody clone with 66031-1-PBS in a different storage buffer formulation.



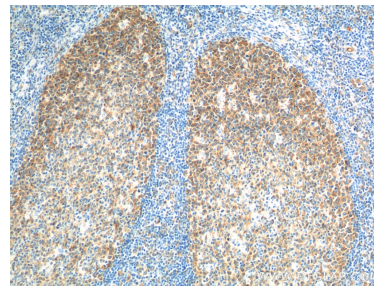
Immunofluorescent analysis of (4% PFA) fixed HeLa cells using Alpha Tubulin antibody (66031-1-Ig, Clone: 1E4C11) at dilution of 1:1000 and CoraLite®594-Conjugated AffiniPure Goat Anti-Mouse IgG(H+L), Histone H1.2 antibody (19649-1-AP, green). This data was developed using the same antibody clone with 66031-1-PBS in a different storage buffer formulation.



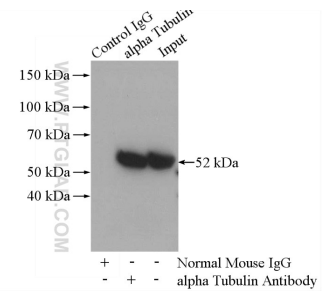
Immunofluorescent analysis of (4% PFA) fixed MCF-7 cells using Alpha Tubulin antibody (66031-1-Ig, Clone: 1E4C11) at dilution of 1:1000 and CoraLite®594-Conjugated AffiniPure Goat Anti-Rabbit IgG(H+L), ZO-1 antibody (21773-1-AP, green). This data was developed using the same antibody clone with 66031-1-PBS in a different storage buffer formulation.



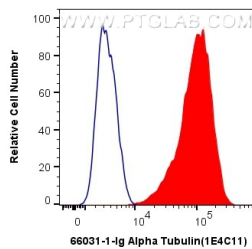
Immunofluorescent analysis of (-20°C Ethanol) fixed HepG2 cells using 66031-1-Ig(alpha Tubulin antibody) at dilution of 1:100 and Alexa Fluor 488-conjugated AffiniPure Goat Anti-Mouse IgG(H+L). This data was developed using the same antibody clone with 66031-1-PBS in a different storage buffer formulation.



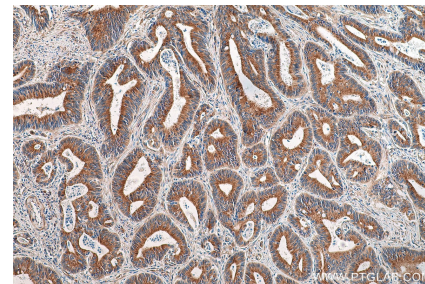
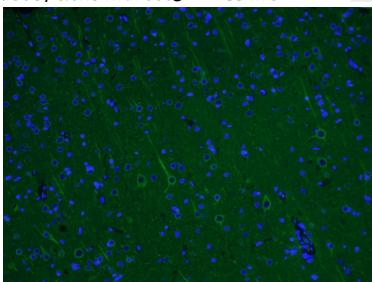
Immunohistochemical analysis of paraffin-embedded human tonsillitis tissue slide using 66031-1-Ig (alpha Tubulin antibody at dilution of 1:200 (under 10x lens). Heat mediated antigen retrieval with Tris-EDTA buffer (pH 9.0). This data was developed using the same antibody clone with 66031-1-PBS in a different storage buffer formulation.



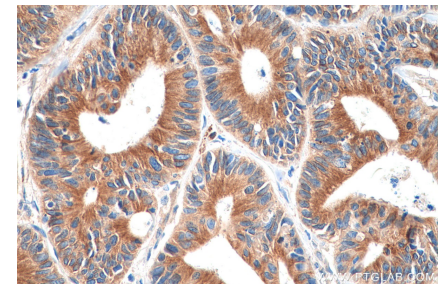
IP result of anti-Alpha Tubulin (IP:66031-1-Ig, 5ug; Detection:11224-1-AP 1:1000) with HeLa cells lysate 2800ug. This data was developed using the same antibody clone with 66031-1-PBS in a different storage buffer formulation.



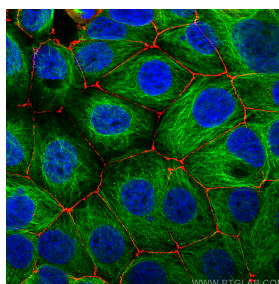
1X10⁶ HeLa cells were intracellularly stained with 0.4 ug Anti-Human Alpha Tubulin (66031-1-Ig, Clone:1E4C11) and CoraLite®488-Conjugated AffiniPure Goat Anti-Mouse IgG(H+L) at dilution 1:1000 (red), or 0.4 ug Mouse IgG2b Isotype Control (MPC-11) (65128-1-Ig, Clone: MPC-11) (blue). Cells were fixed with 4% PFA and permeabilized with Flow Cytometry Perm Buffer (PF00011-C). This data was developed using the same antibody clone with 66031-1-PBS in a



Immunohistochemical analysis of paraffin-embedded human colon cancer tissue slide using 66031-1-Ig (Alpha Tubulin antibody) at dilution of 1:1000 (under 10x lens). Heat mediated antigen retrieval with Tris-EDTA buffer (pH 9.0). This data was developed using the same antibody clone with 66031-1-PBS in a different storage buffer formulation.



Immunohistochemical analysis of paraffin-embedded human colon cancer tissue slide using 66031-1-Ig (Alpha Tubulin antibody) at dilution of 1:1000 (under 40x lens). Heat mediated antigen retrieval with Tris-EDTA buffer (pH 9.0). This data was developed using the same antibody clone with 66031-1-PBS in a different storage buffer formulation.



Immunofluorescent analysis of (4% PFA) fixed rat brain tissue using 66031-1-Ig (alpha Tubulin antibody) at dilution of 1:100 and CoraLite488-Conjugated AffiniPure Goat Anti-Mouse IgG(H+L). This data was developed using the same antibody clone with 66031-1-PBS in a different storage buffer formulation.

Immunofluorescent analysis of (4% PFA) fixed MCF-7 cells using Alpha Tubulin antibody (66031-1-Ig, Clone: 1E4C11) at dilution of 1:1000 and CoraLite®488-Conjugated AffiniPure Goat Anti-Mouse IgG(H+L), ZO-1 antibody (21773-1-AP, red). This data was developed using the same antibody clone with 66031-1-PBS in a different storage buffer formulation.