

For Research Use Only

ASS1 Monoclonal antibody

Catalog Number: 66036-1-Ig

Featured Product

4 Publications



Basic Information

Catalog Number:

66036-1-Ig

Size:

150ul, Concentration: 1300 ug/ml by 445

Nanodrop and 1000 ug/ml by Bradford method using BSA as the standard;

Source:

Mouse

Isotype:

IgG1

Immunogen Catalog Number:

AG9314

GenBank Accession Number:

BC009243

GeneID (NCBI):

445

UNIPROT ID:

P00966

Full Name:

argininosuccinate synthetase 1

Calculated MW:

412 aa, 47 kDa

Observed MW:

40-45 kDa

Purification Method:

Protein G purification

CloneNo.:

1D1A11

Recommended Dilutions:

WB 1:1000-1:8000

IHC 1:250-1:1000

IF/ICC 1:20-1:200

Applications

Tested Applications:

WB, IHC, IF/ICC, ELISA

Cited Applications:

WB

Species Specificity:

human, pig

Cited Species:

human

Note-IHC: suggested antigen retrieval with TE buffer pH 9.0; (*) Alternatively, antigen retrieval may be performed with citrate buffer pH 6.0

Positive Controls:

WB : pig liver tissue, HeLa cells, human liver tissue, L02 cells

IHC : human liver tissue, human liver cancer tissue, human testis tissue

IF/ICC : MCF-7 cells,

Background Information

ASS1 is a rate-limiting enzyme in the urea cycle. Citrullinemia type I is an autosomal recessive disorder that is caused by a deficiency of the urea cycle enzyme argininosuccinate synthetase (ASS1). Deficiency of ASS1 shows various clinical manifestations encompassing severely affected patients with fatal neonatal hyperammonemia as well as asymptomatic individuals with only a biochemical phenotype(PMID:19006241).

Notable Publications

Author	Pubmed ID	Journal	Application
Jiangbo Liu	25240403	BMC Cancer	WB
Mei-Juan Tu	33051382	Mol Pharmacol	WB
Qingyuan Feng	32677906	BMC Cancer	WB

Storage

Storage:

Store at -20°C. Stable for one year after shipment.

Storage Buffer:

PBS with 0.02% sodium azide and 50% glycerol, pH7.3

Aliquoting is unnecessary for -20°C storage

*** 20ul sizes contain 0.1% BSA

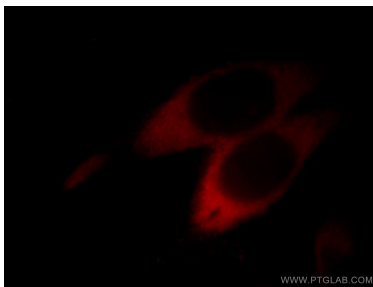
For technical support and original validation data for this product please contact:

T: 1 (888) 4PTGLAB (1-888-478-4522) (toll free in USA), or 1(312) 455-8498 (outside USA)

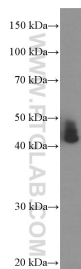
E: proteintech@ptglab.com
W: ptglab.com

This product is exclusively available under Proteintech Group brand and is not available to purchase from any other manufacturer.

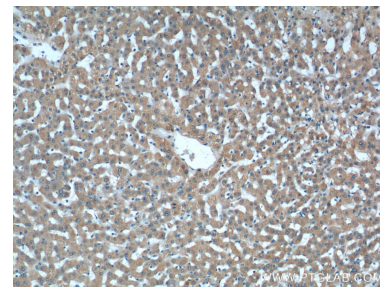
Selected Validation Data



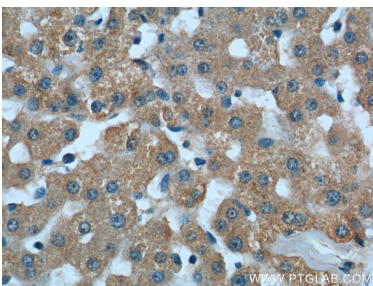
Immunofluorescent analysis of MCF-7 cells, using ASS1 antibody 66036-1-Ig at 1:50 dilution and Rhodamine-labeled goat anti-mouse IgG (red).



pig liver tissue were subjected to SDS PAGE followed by western blot with 66036-1-Ig (ASS1 Antibody) at dilution of 1:4000 incubated at room temperature for 1.5 hours.



Immunohistochemical analysis of paraffin-embedded human liver tissue slide using 66036-1-Ig (ASS1 Antibody) at dilution of 1:500 (under 10x lens).



Immunohistochemical analysis of paraffin-embedded human liver tissue slide using 66036-1-Ig (ASS1 Antibody) at dilution of 1:500 (under 40x lens).