

For Research Use Only

ASS1 Monoclonal antibody, PBS Only

Catalog Number: 66036-1-PBS

Featured Product



Basic Information

Catalog Number:

66036-1-PBS

Size:

100ug, Concentration: 1 mg/ml by Nanodrop;

Source:

Mouse

Isotype:

IgG1

Immunogen Catalog Number:

AG9314

GenBank Accession Number:

BC009243

GeneID (NCBI):

445

UNIPROT ID:

P00966

Full Name:

argininosuccinate synthetase 1

Calculated MW:

412 aa, 47 kDa

Observed MW:

40-45 kDa

Purification Method:

Protein G purification

CloneNo.:

1D1A11

Applications

Tested Applications:

WB, IF, IHC, Indirect ELISA

Species Specificity:

human, pig

Background Information

ASS1 is a rate-limiting enzyme in the urea cycle. Citrullinemia type I is an autosomal recessive disorder that is caused by a deficiency of the urea cycle enzyme argininosuccinate synthetase (ASS1). Deficiency of ASS1 shows various clinical manifestations encompassing severely affected patients with fatal neonatal hyperammonemia as well as asymptomatic individuals with only a biochemical phenotype (PMID:19006241).

Storage

Storage:

Store at -80°C.

Storage Buffer:

PBS Only

For technical support and original validation data for this product please contact:

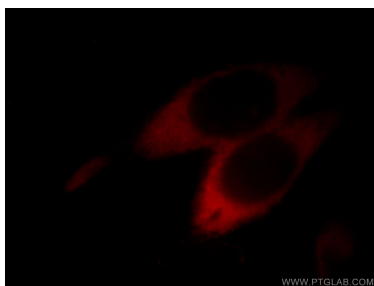
T: 1 (888) 4PTGLAB (1-888-478-4522) (toll free in USA), or 1(312) 455-8498 (outside USA)

E: proteintech@ptglab.com

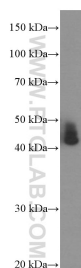
W: ptglab.com

This product is exclusively available under Proteintech Group brand and is not available to purchase from any other manufacturer.

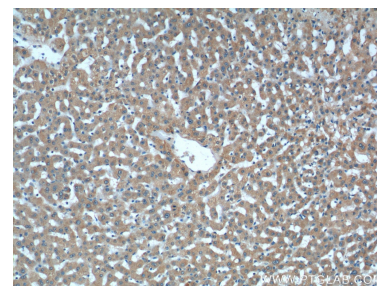
Selected Validation Data



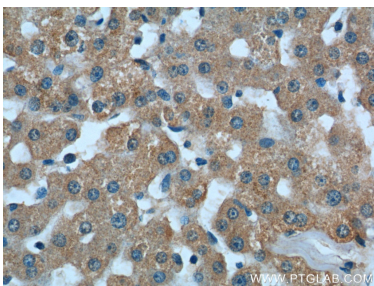
Immunofluorescent analysis of MCF-7 cells, using ASS1 antibody 66036-1-Ig at 1:50 dilution and Rhodamine-labeled goat anti-mouse IgG (red). This data was developed using the same antibody clone with 66036-1-PBS in a different storage buffer formulation.



pig liver tissue were subjected to SDS PAGE followed by western blot with 66036-1-Ig (ASS1 Antibody) at dilution of 1:4000 incubated at room temperature for 1.5 hours. This data was developed using the same antibody clone with 66036-1-PBS in a different storage buffer formulation.



Immunohistochemical analysis of paraffin-embedded human liver tissue slide using 66036-1-Ig (ASS1 Antibody) at dilution of 1:500 (under 10x lens). This data was developed using the same antibody clone with 66036-1-PBS in a different storage buffer formulation.



Immunohistochemical analysis of paraffin-embedded human liver tissue slide using 66036-1-Ig (ASS1 Antibody) at dilution of 1:500 (under 40x lens). This data was developed using the same antibody clone with 66036-1-PBS in a different storage buffer formulation.