

For Research Use Only

CPT1A Monoclonal antibody, PBS Only (Capture)

Catalog Number: 66039-1-PBS

Featured Product



Basic Information

Catalog Number: 66039-1-PBS	GenBank Accession Number: BC000185	Purification Method: Protein A purification
Size: 100ug , Concentration: 1mg/ml by Nanodrop;	GeneID (NCBI): 1374	CloneNo.: 5D8G9
Source: Mouse	UNIPROT ID: P50416	
Isotype: IgG2a	Full Name: carnitine palmitoyltransferase 1A (liver)	
Immunogen Catalog Number: AG7745	Calculated MW: 88 kDa	
	Observed MW: 86 kDa	

Applications

Tested Applications:
WB, IHC, IF/ICC, FC (Intra), IP, Cytometric bead array, Indirect ELISA

Species Specificity:
human, mouse, rat

Product Information

66039-1-PBS targets CPT1A as part of a matched antibody pair:

MP50197-1: 66039-1-PBS capture and 66039-2-PBS detection (validated in Cytometric bead array)

Unconjugated mouse monoclonal antibody pair in PBS only (BSA and azide free) storage buffer at a concentration of 1 mg/mL, ready for conjugation.

This conjugation ready format makes antibodies ideal for use in many applications including: ELISAs, multiplex assays requiring matched pairs, mass cytometry, and multiplex imaging applications. Antibody use should be optimized by the end user for each application and assay.

Background Information

CPT1A, also named as CPT1, CPT1-L and L-CPTI, belongs to the carnitine/choline acetyltransferase family. Carnitine palmitoyltransferase (CPT) deficiencies are common disorders of mitochondrial fatty acid oxidation. The CPT system is made up of two separate proteins located in the outer (CPT1) and inner (CPT2) mitochondrial membranes. CPT1A is an active forms of related liver-type carnitine palmitoyltransferase I. (PMID: 11001805). CPT1A deficiency presents as recurrent attacks of fasting hypoketotic hypoglycemia. (PMID: 15363638). This antibody can bind the close sequences genes.

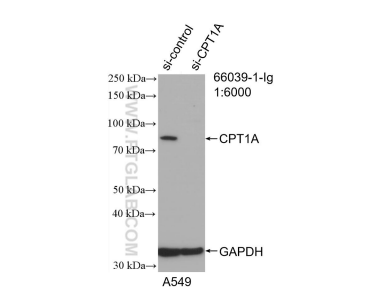
Storage

Storage:
Store at -80°C.
Storage Buffer:
PBS Only

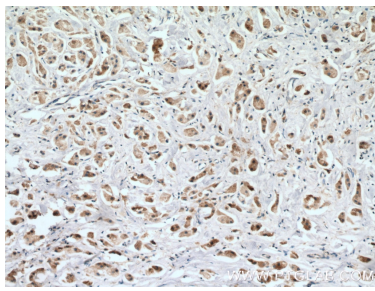
For technical support and original validation data for this product please contact:
T: 1 (888) 4PTGLAB (1-888-478-4522) (toll free in USA), or 1(312) 455-8498 (outside USA)
E: proteintech@ptglab.com
W: ptglab.com

This product is exclusively available under Proteintech Group brand and is not available to purchase from any other manufacturer.

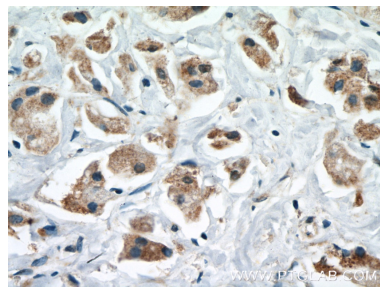
Selected Validation Data



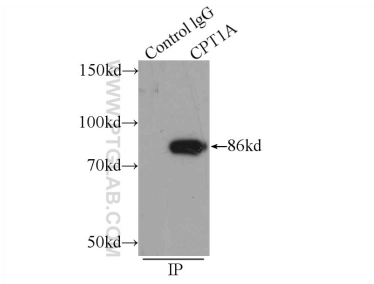
WB result of CPT1A antibody (66039-1-Ig; 1:6000; incubated at room temperature for 1.5 hours) with sh-Control and sh-CPT1A transfected A549 cells. This data was developed using the same antibody clone with 66039-1-PBS in a different storage buffer formulation.



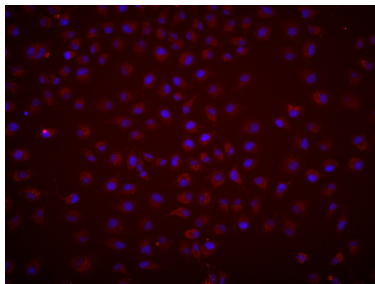
Immunohistochemical analysis of paraffin-embedded human breast cancer tissue slide using 66039-1-Ig (CPT1A antibody) at dilution of 1:400 (under 10x lens. Heat mediated antigen retrieval with Tris-EDTA buffer (pH 9.0). This data was developed using the same antibody clone with 66039-1-PBS in a different storage buffer formulation.



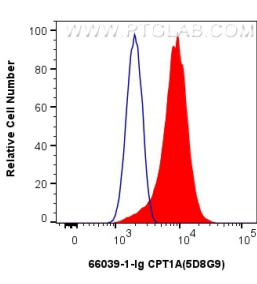
Immunohistochemical analysis of paraffin-embedded human breast cancer tissue slide using 66039-1-Ig (CPT1A antibody) at dilution of 1:400 (under 40x lens. Heat mediated antigen retrieval with Tris-EDTA buffer (pH 9.0). This data was developed using the same antibody clone with 66039-1-PBS in a different storage buffer formulation.



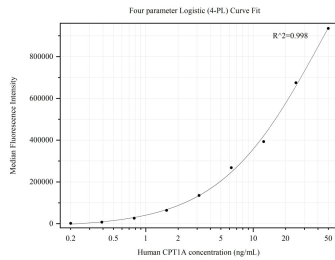
IP result of anti-CPT1A (IP:66039-1-Ig, 4ug; Detection:66039-1-Ig 1:500) with MCF-7 cells lysate 1200ug. This data was developed using the same antibody clone with 66039-1-PBS in a different storage buffer formulation.



Immunofluorescent analysis of (4% PFA) fixed HeLa cells using CPT1A antibody (66039-1-Ig, Clone: 5D8G9) at dilution of 1:1800 and Multi-rAb Coralite® Plus 594-Goat Anti-Mouse Recombinant Secondary Antibody (H+L) (Cat.NO. RGAM004). This data was developed using the same antibody clone with 66039-1-PBS in a different storage buffer formulation.



1x10⁶ HeLa cells were intracellularly stained with 0.25 ug CPT1A Monoclonal antibody (66039-1-Ig, Clone:5D8G9) and Coralite® 488-Conjugated Goat Anti-Mouse IgG(H+L) (SA00013-1)(red), or 0.25 ug Mouse IgG2a isotype control Mouse McAb (66360-2-Ig, Clone: 11A1B2) (blue). Cells were fixed with 4% PFA and permeabilized with Flow Cytometry Perm Buffer (PF00011-C). This data was developed using the same antibody clone with 66039-1-PBS in a



Cytometric bead array standard curve of MP50197-1, CPT1A Monoclonal Matched Antibody Pair, PBS Only. Capture antibody: 66039-1-PBS. Detection antibody: 66039-2-PBS. Standard:Ag7745. Range: 0.195-50 ng/mL