

For Research Use Only

HSP60 Monoclonal antibody, PBS Only (Capture)

Catalog Number: 66041-1-PBS

Featured Product



Basic Information

Catalog Number:

66041-1-PBS

Size:

100ug, Concentration: 1mg/ml by Nanodrop;

Source:

Mouse

Isotype:

IgG1

Immunogen Catalog Number:

AG7848

GenBank Accession Number:

BC003030

GeneID (NCBI):

3329

UNIPROT ID:

P10809

Full Name:

heat shock 60kDa protein 1 (chaperonin)

Calculated MW:

61 kDa

Observed MW:

60 kDa

Purification Method:

Protein A purification

CloneNo.:

2F10E7

Applications

Tested Applications:

WB, IHC, IF/ICC, IP, Cytometric bead array, Indirect ELISA

Species Specificity:

human, mouse, rat

Product Information

66041-1-PBS targets HSP60 as part of a matched antibody pair:

MP50644-1: 66041-1-PBS capture and 66041-2-PBS detection (validated in Cytometric bead array)

Unconjugated mouse monoclonal antibody pair in PBS only (BSA and azide free) storage buffer at a concentration of 1 mg/mL, ready for conjugation.

This conjugation ready format makes antibodies ideal for use in many applications including: ELISAs, multiplex assays requiring matched pairs, mass cytometry, and multiplex imaging applications. Antibody use should be optimized by the end user for each application and assay.

Background Information

HSPD1, also known as HSP60, belongs to the chaperonin family and acts as a chaperone to enhance cell survival under physiological stresses. Hsp60 has been shown to be connected with many aspects of cell functions such as protein folding and assembling of polypeptide chains in mitochondria. Recently it has been reported that HSP60 is associated with apoptosis or inhibition of cancer cell growth. (21822415)

Storage

Storage:

Store at -80°C.

Storage Buffer:

PBS Only

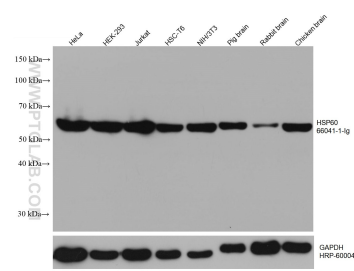
For technical support and original validation data for this product please contact:

T: 1 (888) 4PTGLAB (1-888-478-4522) (toll free in USA), or 1(312) 455-8498 (outside USA)

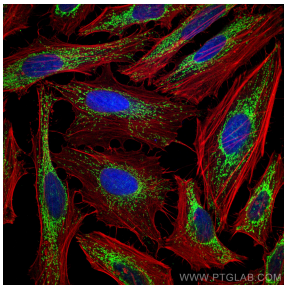
E: proteintech@ptglab.com
W: ptglab.com

This product is exclusively available under Proteintech Group brand and is not available to purchase from any other manufacturer.

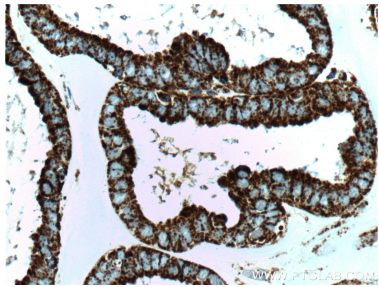
Selected Validation Data



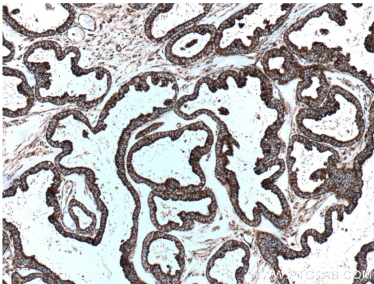
Various lysates were subjected to SDS PAGE followed by western blot with 66041-1-Ig (HSP60 antibody) at dilution of 1:20000 incubated at room temperature for 1.5 hours. The membrane was stripped and reblotted with HRP-conjugated GAPDH Monoclonal antibody (HRP-60004) as loading control. This data was developed using the same antibody clone with 66041-1-PBS in a different storage buffer formulation.



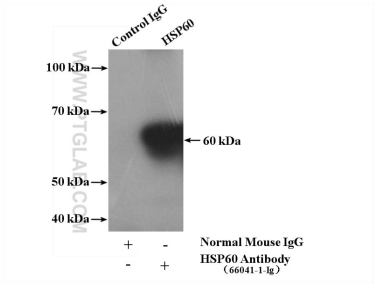
Immunofluorescent analysis of (4% PFA) fixed HeLa cells using HSP60 antibody (66041-1-Ig, Clone: 2F10E7) at dilution of 1:100 and CoraLite®488-Conjugated AffiniPure Goat Anti-Mouse IgG(H+L), (CL594-Phalloidin, red). This data was developed using the same antibody clone with 66041-1-PBS in a different storage buffer formulation.



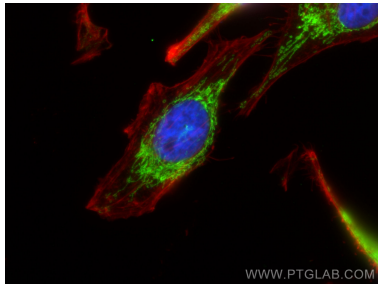
Immunohistochemical analysis of paraffin-embedded human ovary tumor tissue slide using 66041-1-Ig (HSP60 antibody at dilution of 1:500 (under 40x lens). Heat mediated antigen retrieval with Tris-EDTA buffer (pH 9.0). This data was developed using the same antibody clone with 66041-1-PBS in a different storage buffer formulation.



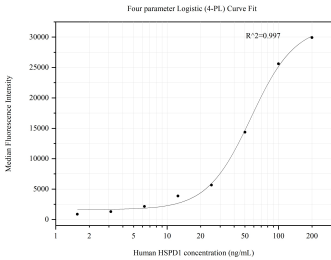
Immunohistochemical analysis of paraffin-embedded human ovary tumor tissue slide using 66041-1-Ig (HSP60 antibody at dilution of 1:500 (under 10x lens). Heat mediated antigen retrieval with Tris-EDTA buffer (pH 9.0). This data was developed using the same antibody clone with 66041-1-PBS in a different storage buffer formulation.



IP result of anti-HSP60 (IP:66041-1-Ig, 5ug; Detection:66041-1-Ig 1:2000) with mouse liver tissue lysate 4000ug. This data was developed using the same antibody clone with 66041-1-PBS in a different storage buffer formulation.



Immunofluorescent analysis of (4% PFA) fixed HepG2 cells using HSP60 antibody (66041-1-Ig, Clone: 2F10E7) at dilution of 1:400 and CoraLite®488-Conjugated AffiniPure Goat Anti-Mouse IgG(H+L) (SA00013-1), CL594-phalloidin (red). This data was developed using the same antibody clone with 66041-1-PBS in a different storage buffer formulation.



Cytometric bead array standard curve of MP50644-1, HSPD1 Monoclonal Matched Antibody Pair, PBS Only. Capture antibody: 66041-1-PBS. Detection antibody: 66041-2-PBS. Standard:Ag7848. Range: 1.563-200 ng/mL.