

For Research Use Only

RPS3 Monoclonal antibody

Catalog Number: 66046-1-Ig

Featured Product

15 Publications



Basic Information

Catalog Number:

66046-1-Ig

Size:

150ul, Concentration: 2500 ug/ml by
Nanodrop and 1120 ug/ml by Bradford
method using BSA as the standard;

Source:

Mouse

Isotype:

IgG2a

Immunogen Catalog Number:

AG7515

GenBank Accession Number:

BC003137

GeneID (NCBI):

6188

UNIPROT ID:

P23396

Full Name:

ribosomal protein S3

Calculated MW:

27 kDa

Observed MW:

33 kDa

Purification Method:

Protein A purification

CloneNo.:

2G7H4

Recommended Dilutions:

WB 1:20000-1:100000

IP 0.5-4.0 ug for 1.0-3.0 mg of total
protein lysate

IHC 1:50-1:500

IF/ICC 1:50-1:500

Applications

Tested Applications:

WB, IHC, IF/ICC, IP, ELISA

Cited Applications:

WB, IHC, IF, ChIP

Species Specificity:

human, mouse, rat

Cited Species:

human, mouse

**Note-IHC: suggested antigen retrieval with
TE buffer pH 9.0; (*) Alternatively, antigen
retrieval may be performed with citrate
buffer pH 6.0**

Positive Controls:

WB: HSC-T6 cells, HeLa cells, human brain tissue,
Neuro-2a cells, RAW 264.7 cells, ROS1728 cells, rat
brain tissue, HEK-293 cells, HepG2 cells, K-562 cells,
Jurkat cells, NIH/3T3 cells, 4T1 cells

IP: HEK-293 cells,

IHC: human ovary tumor tissue, human colon cancer
tissue, human pancreas tissue

IF/ICC: HepG2 cells,

Background Information

40S ribosomal protein S3 (RPS3), also named as SW-cl.26, is a 243 amino acid protein, which contains one KH type-2 domain and belongs to the ribosomal protein S3P family. RPS3 localizes in the cytoplasm. RPS3 is identified in a IGF2BP1-dependent mRNP granule complex, which contains untranslated mRNAs. RPS3 plays a role in repairing various DNA damage acting as a repair UV endonuclease. Nuclear accumulation of RPS3 results in an increase in DNA repair activity to some extent, thereby sustaining neuronal survival. The calculated molecular weight of RPS3 is 26 kDa, but the modified RPS3 is about 33 kDa.

Notable Publications

Author	Pubmed ID	Journal	Application
Wei Cai	36170234	Autophagy	IF
Nerea Ugidos	31620119	Front Immunol	WB, IF
Hiroko Nagao-Kitamoto	25449781	Cancer Lett	IHC

Storage

Storage:

Store at -20°C. Stable for one year after shipment.

Storage Buffer:

PBS with 0.02% sodium azide and 50% glycerol pH 7.3.

Aliquoting is unnecessary for -20°C storage

*** 20ul sizes contain 0.1% BSA

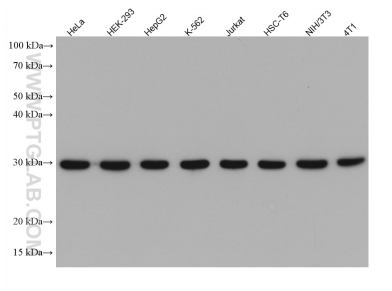
For technical support and original validation data for this product please contact:

T: 1 (888) 4PTGLAB (1-888-478-4522) (toll free
in USA), or 1(312) 455-8498 (outside USA)

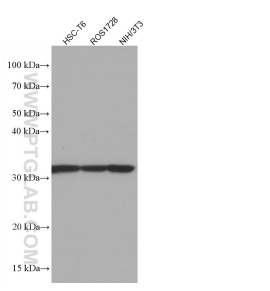
E: proteintech@ptglab.com
W: ptglab.com

This product is exclusively available under Proteintech
Group brand and is not available to purchase from any
other manufacturer.

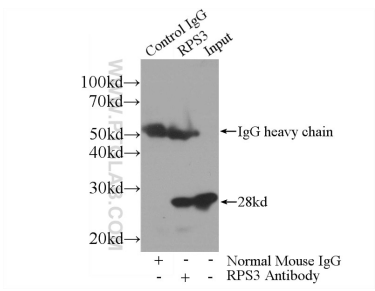
Selected Validation Data



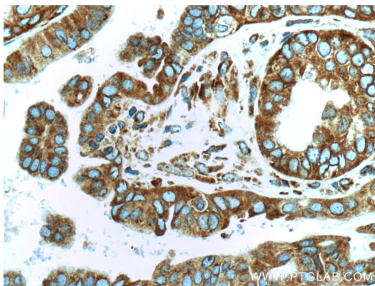
Various lysates were subjected to SDS PAGE followed by western blot with 66046-1-Ig (RPS3 antibody) at dilution of 1:100000 incubated at room temperature for 1.5 hours.



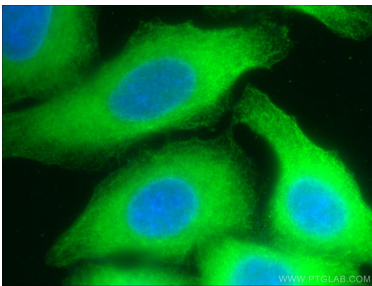
Various lysates were subjected to SDS PAGE followed by western blot with 66046-1-Ig (RPS3 antibody) at dilution of 1:50000 incubated at room temperature for 1.5 hours.



IP result of anti-RPS3 (IP:66046-1-Ig, 3ug; Detection:66046-1-Ig 1:2000) with HEK-293 cells lysate 1800ug.



Immunohistochemical analysis of paraffin-embedded human ovary tumor tissue slide using 66046-1-Ig (RPS3 Antibody) at dilution of 1:1000 (under 40x lens). Heat mediated antigen retrieval with Tris-EDTA buffer (pH 9.0).



Immunofluorescent analysis of (-20°C Ethanol) fixed HepG2 cells using 66046-1-Ig(RPS3 antibody) at dilution of 1:100 and Alexa Fluor 488-conjugated Goat Anti-Mouse IgG(H+L).