

For Research Use Only

# Cyclophilin B Monoclonal antibody, PBS Only



Catalog Number: 66047-1-PBS

Featured Product

## Basic Information

Catalog Number:

66047-1-PBS

Size:

100ug, Concentration: 1 mg/ml by  
Nanodrop;

Source:

Mouse

Isotype:

IgG2a

Immunogen Catalog Number:

AG17957

GenBank Accession Number:

BC032138

GeneID (NCBI):

5479

UNIPROT ID:

P23284

Full Name:

peptidylprolyl isomerase B  
(cyclophilin B)

Calculated MW:

216 aa, 24 kDa

Observed MW:

19-24 kDa

Purification Method:

Protein A purification

CloneNo.:

8H4F1

## Applications

Tested Applications:

WB, IF, FC, IHC, Indirect ELISA

Species Specificity:

human, mouse

## Background Information

PPIB, also named as CYPB, SCYLP, PPIase B and CYP-S1, belongs to the cyclophilin-type PPIase family and PPIase B subfamily. PPIases accelerate the folding of proteins. It catalyzes the cis-trans isomerization of proline imidic peptide bonds in oligopeptides. PPIB is secreted in biological fluids such as blood or milk and binds to a specific receptor present on the human lymphoblastic cell line Jurkat and on human peripheral blood lymphocytes. The full-length of PPIB has 216aa (24 kDa), and a 33aa-signal peptide could be removed in the mature form (about 19 kDa).

## Storage

Storage:

Store at -80°C.

Storage Buffer:

PBS Only

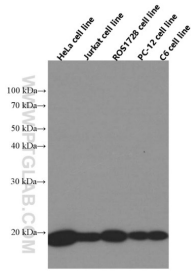
For technical support and original validation data for this product please contact:

T: 1 (888) 4PTGLAB (1-888-478-4522) (toll free  
in USA), or 1(312) 455-8498 (outside USA)

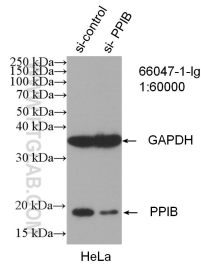
E: [proteintech@ptglab.com](mailto:proteintech@ptglab.com)  
W: [ptglab.com](http://ptglab.com)

This product is exclusively available under Proteintech Group brand and is not available to purchase from any other manufacturer.

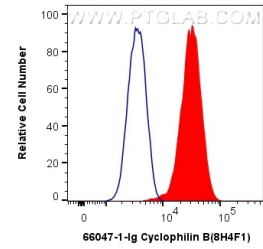
## Selected Validation Data



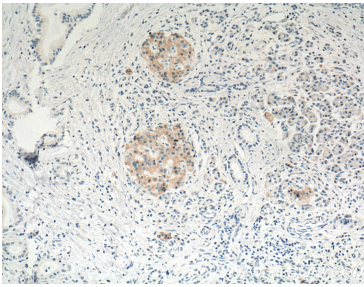
HeLa/Jurkat/ROS1728/PC-12/C6 cells were subjected to SDS PAGE followed by western blot with 66047-1-Ig (Cyclophilin B antibody at dilution of 1:4000 incubated at room temperature for 1.5 hours. This data was developed using the same antibody clone with 66047-1-PBS in a different storage buffer formulation.



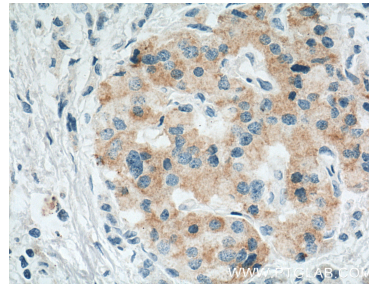
WB result of Cyclophilin B antibody (66047-1-Ig; 1:60000; incubated at room temperature for 1.5 hours) with sh-Control and sh-Cyclophilin B transfected HeLa cells. This data was developed using the same antibody clone with 66047-1-PBS in a different storage buffer formulation.



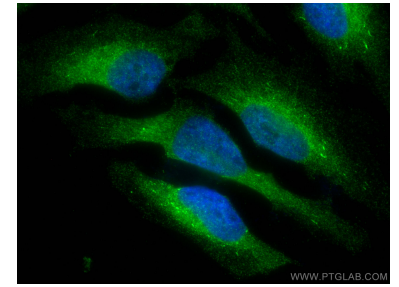
1X10<sup>6</sup> HeLa cells were intracellularly stained with 0.4 ug Anti-Human Cyclophilin B (66047-1-Ig, Clone:8H4F1) and CoraLite@488-Conjugated AffiniPure Goat Anti-Mouse IgG(H+L) at dilution 1:1000 (red), or 0.4 ug Mouse IgG2a Isotype Control (C1.18.4) (65208-1-Ig, Clone: C1.18.4) (blue). Cells were fixed with 4% PFA and permeabilized with Flow Cytometry Perm Buffer (PF00011-C). This data was developed using the same antibody clone with 66047-1-PBS in a



Immunohistochemical analysis of paraffin-embedded human pancreas cancer tissue slide using 66047-1-Ig (Cyclophilin B antibody at dilution of 1:200 (under 10x lens). Heat mediated antigen retrieval with Tris-EDTA buffer (pH 9.0). This data was developed using the same antibody clone with 66047-1-PBS in a different storage buffer formulation.



Immunohistochemical analysis of paraffin-embedded human pancreas cancer tissue slide using 66047-1-Ig (Cyclophilin B antibody at dilution of 1:200 (under 40x lens). Heat mediated antigen retrieval with Tris-EDTA buffer (pH 9.0). This data was developed using the same antibody clone with 66047-1-PBS in a different storage buffer formulation.



Immunofluorescent analysis of (4% PFA) fixed HeLa cells using Cyclophilin B antibody (66047-1-Ig, Clone: 8H4F1) at dilution of 1:800 and CoraLite@488-Conjugated AffiniPure Goat Anti-Mouse IgG(H+L). This data was developed using the same antibody clone with 66047-1-PBS in a different storage buffer formulation.