

For Research Use Only

# NOB1 Monoclonal antibody

Catalog Number: 66048-1-Ig **1 Publications**



## Basic Information

|  |   |   |
|--|---|---|
| <b>Catalog Number:</b><br>66048-1-Ig   | <b>GenBank Accession Number:</b><br>BC000050                              | <b>Purification Method:</b><br>Protein G purification                 |
| <b>Size:</b><br>150ul , Concentration: 1100 ug/ml by Nanodrop and 1000 ug/ml by Bradford method using BSA as the standard; | <b>GeneID (NCBI):</b><br>28987  | <b>CloneNo.:</b><br>8C11A12   |
| <b>Source:</b><br>Mouse  | <b>UNIPROT ID:</b><br>Q9ULX3  | <b>Recommended Dilutions:</b><br>WB: 1:1000-1:6000<br>IHC: 1:20-1:200 |
| <b>Isotype:</b><br>IgG1  | <b>Full Name:</b><br>NIN1/RPN12 binding protein 1 homolog (S. cerevisiae) |   |
| <b>Immunogen Catalog Number:</b><br>AG17907  | <b>Calculated MW:</b><br>47 kDa   |   |
|  | <b>Observed MW:</b><br>47 kDa   |   |

## Applications

|   |   |
|---|---|
| <b>Tested Applications:</b><br>WB, IHC, ELISA | <b>Positive Controls:</b>                       |
| <b>Cited Applications:</b><br>WB              | <b>WB :</b> Jurkat cells, human placenta tissue |
| <b>Species Specificity:</b><br>human          | <b>IHC :</b> human breast cancer tissue,        |
| <b>Cited Species:</b><br>human                |   |

**Note-IHC: suggested antigen retrieval with TE buffer pH 9.0; (\*) Alternatively, antigen retrieval may be performed with citrate buffer pH 6.0**

## Background Information

NOB1 was first identified in yeast as an essential gene encoding the Nin one binding protein, which is involved in pre-rRNA processing. In a late cytoplasmic processing step, Nob1 cleaves a 20S rRNA intermediate at cleavage site D to produce the mature 18S rRNA. In addition, NOB1 is a crucial molecule in the maturation of the 20S proteasome and protein degradation. It serves as a chaperone to join the 20S proteasome with the 19S regulatory particle in the nucleus and facilitates the maturation of the 20S proteasome. Recently NOB1 has been reported to be overexpressed in several types of cancer, suggesting its involvement in the tumorigenesis.

## Notable Publications

| Author      | Pubmed ID | Journal | Application |
|-------------|-----------|---------|-------------|
| Xingyuan Xu | 40157618  | Gene    | WB          |

## Storage

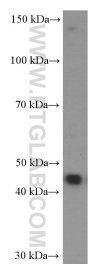
**Storage:**  
Store at -20°C. Stable for one year after shipment.  
**Storage Buffer:**  
PBS with 0.02% sodium azide and 50% glycerol, pH7.3  
**Aliquoting is unnecessary for -20°C storage**

**\*\*\* 20ul sizes contain 0.1% BSA**

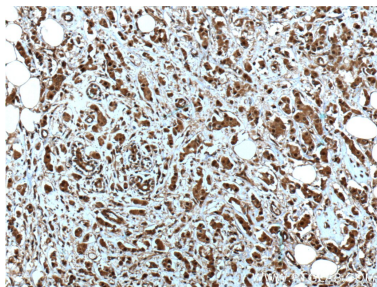
For technical support and original validation data for this product please contact:  
T: 1 (888) 4PTGLAB (1-888-478-4522) (toll free in USA), or 1(312) 455-8498 (outside USA)  
E: [proteintech@ptglab.com](mailto:proteintech@ptglab.com)  
W: [ptglab.com](http://ptglab.com)

**This product is exclusively available under Proteintech Group brand and is not available to purchase from any other manufacturer.**

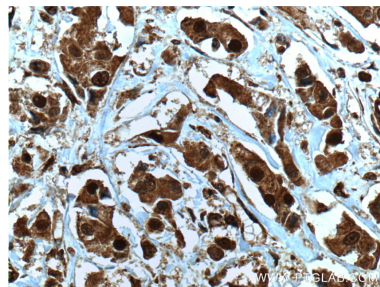
Selected Validation Data



Jurkat cells were subjected to SDS PAGE followed by western blot with 66048-1-Ig (NOB1 Antibody) at dilution of 1:3000 incubated at room temperature for 1.5 hours.



Immunohistochemical analysis of paraffin-embedded human breast cancer tissue slide using 66048-1-Ig (NOB1 Antibody) at dilution of 1:200 (under 10x lens). Heat mediated antigen retrieval with Tris-EDTA buffer (pH 9.0).



Immunohistochemical analysis of paraffin-embedded human breast cancer tissue slide using 66048-1-Ig (NOB1 Antibody) at dilution of 1:200 (under 40x lens). Heat mediated antigen retrieval with Tris-EDTA buffer (pH 9.0).