

For Research Use Only

NOB1 Monoclonal antibody, PBS Only

Catalog Number: 66048-1-PBS



Basic Information

Catalog Number: 66048-1-PBS	GenBank Accession Number: BC000050	Purification Method: Protein G purification
Size: 100ug , Concentration: 1 mg/ml by Nanodrop;	GeneID (NCBI): 28987	CloneNo.: 8C11A12
Source: Mouse	UNIPROT ID: Q9ULX3	
Isotype: IgG1	Full Name: NIN1/RPN12 binding protein 1 homolog (S. cerevisiae)	
Immunogen Catalog Number: AG17907	Calculated MW: 47 kDa	
	Observed MW: 47 kDa	

Applications

Tested Applications:
WB, IHC, Indirect ELISA

Species Specificity:
human

Background Information

NOB1 was first identified in yeast as an essential gene encoding the Nin one binding protein, which is involved in pre-rRNA processing. In a late cytoplasmic processing step, Nob1 cleaves a 20S rRNA intermediate at cleavage site D to produce the mature 18S rRNA. In addition, NOB1 is a crucial molecule in the maturation of the 20S proteasome and protein degradation. It serves as a chaperone to join the 20S proteasome with the 19S regulatory particle in the nucleus and facilitates the maturation of the 20S proteasome. Recently NOB1 has been reported to be overexpressed in several types of cancer, suggesting its involvement in the tumorigenesis.

Storage

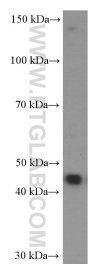
Storage:
Store at -80°C.

Storage Buffer:
PBS Only

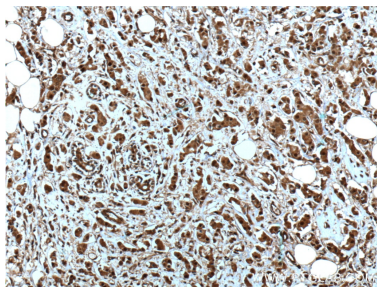
For technical support and original validation data for this product please contact:
T: 1 (888) 4PTGLAB (1-888-478-4522) (toll free in USA), or 1(312) 455-8498 (outside USA)
E: proteintech@ptglab.com
W: ptglab.com

This product is exclusively available under Proteintech Group brand and is not available to purchase from any other manufacturer.

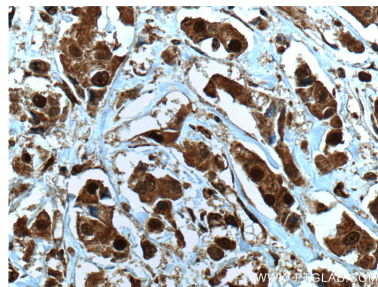
Selected Validation Data



Jurkat cells were subjected to SDS PAGE followed by western blot with 66048-1-Ig (NOB1 Antibody) at dilution of 1:3000 incubated at room temperature for 1.5 hours. This data was developed using the same antibody clone with 66048-1-PBS in a different storage buffer formulation.



Immunohistochemical analysis of paraffin-embedded human breast cancer tissue slide using 66048-1-Ig (NOB1 Antibody) at dilution of 1:200 (under 10x lens). Heat mediated antigen retrieval with Tris-EDTA buffer (pH 9.0). This data was developed using the same antibody clone with 66048-1-PBS in a different storage buffer formulation.



Immunohistochemical analysis of paraffin-embedded human breast cancer tissue slide using 66048-1-Ig (NOB1 Antibody) at dilution of 1:200 (under 40x lens). Heat mediated antigen retrieval with Tris-EDTA buffer (pH 9.0). This data was developed using the same antibody clone with 66048-1-PBS in a different storage buffer formulation.