

For Research Use Only

Serpin C1/Antithrombin III Monoclonal antibody

Catalog Number: 66052-1-Ig **2 Publications**



Basic Information

Catalog Number: 66052-1-Ig	GenBank Accession Number: BC022309	Purification Method: Protein A purification
Size: 150ul , Concentration: 800 ug/ml by Nanodrop and 620 ug/ml by Bradford method using BSA as the standard;	GeneID (NCBI): 462	CloneNo.: 2B2E5
Source: Mouse	UNIPROT ID: P01008	Recommended Dilutions: WB 1:2000-1:10000 IHC 1:50-1:500 IF/ICC 1:400-1:1600
Isotype: IgG1	Full Name: serpin peptidase inhibitor, clade C (antithrombin), member 1	
Immunogen Catalog Number: AG9880	Calculated MW: 464 aa, 53 kDa	
	Observed MW: 53 kDa	

Applications

Tested Applications: WB, IHC, IF/ICC, ELISA	Positive Controls:
Cited Applications: WB, IF	WB : human plasma, human brain tissue, human testis tissue, L02 cells, rat brain tissue
Species Specificity: human, mouse, rat	IHC : human liver cancer tissue, human liver tissue
Cited Species: human, mouse	IF/ICC : HepG2 cells, L02 cells
Note-IHC: suggested antigen retrieval with TE buffer pH 9.0; (*) Alternatively, antigen retrieval may be performed with citrate buffer pH 6.0	

Background Information

SERPINC1, also named Antithrombin III or Antithrombin, is a plasma protease inhibitor and a member of the serpin superfamily. This protein inhibits thrombin as well as other activated serine proteases of the coagulation system, and it regulates the blood coagulation cascade. More than 120 mutations have been identified for this gene, many of which are known to cause antithrombin-III deficiency.

Notable Publications

Author	Pubmed ID	Journal	Application
Emna Ouni	35341935	Matrix Biol	IF
Jun Zhang	35992834	Front Oncol	WB

Storage

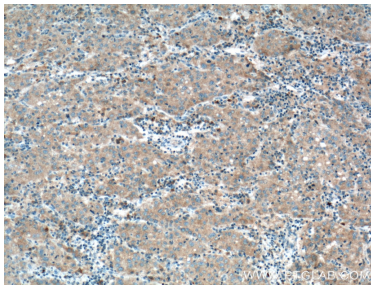
Storage:
Store at -20°C. Stable for one year after shipment.
Storage Buffer:
PBS with 0.02% sodium azide and 50% glycerol pH 7.3.
Aliquoting is unnecessary for -20°C storage

*** 20ul sizes contain 0.1% BSA

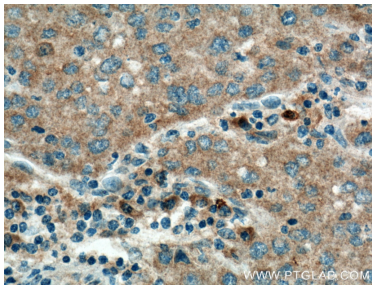
For technical support and original validation data for this product please contact:
T: 1 (888) 4PTGLAB (1-888-478-4522) (toll free in USA), or 1(312) 455-8498 (outside USA)
E: proteintech@ptglab.com
W: ptglab.com

This product is exclusively available under Proteintech Group brand and is not available to purchase from any other manufacturer.

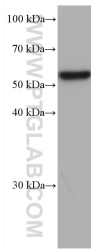
Selected Validation Data



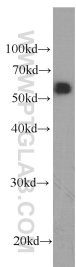
Immunohistochemical analysis of paraffin-embedded human liver cancer tissue slide using 66052-1-Ig (Antithrombin III antibody at dilution of 1:200 (under 10x lens). Heat mediated antigen retrieval with Tris-EDTA buffer (pH 9.0).



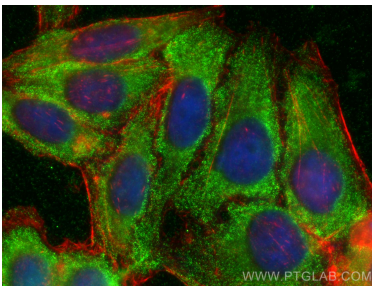
Immunohistochemical analysis of paraffin-embedded human liver cancer tissue slide using 66052-1-Ig (Antithrombin III antibody at dilution of 1:200 (under 40x lens). Heat mediated antigen retrieval with Tris-EDTA buffer (pH 9.0).



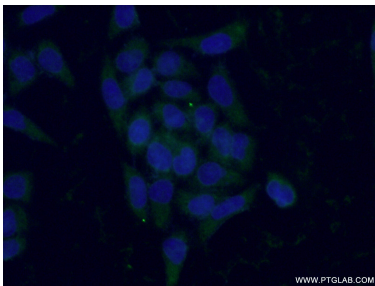
human plasma were subjected to SDS PAGE followed by western blot with 66052-1-Ig (Serpin C1/Antithrombin III antibody) at dilution of 1:5000 incubated at room temperature for 1.5 hours.



L02 cells were subjected to SDS PAGE followed by western blot with 66052-1-Ig (Antithrombin III antibody at dilution of 1:1000 incubated at room temperature for 1.5 hours.



Immunofluorescent analysis of (-20°C Ethanol) fixed HepG2 cells using Serpin C1/Antithrombin III antibody (66052-1-Ig, Clone: 2B2E5) at dilution of 1:200 and CoraLite®488-Conjugated AffiniPure Goat Anti-Mouse IgG(H+L), CL594-phalloidin (red).



Immunofluorescent analysis of (-20°C Ethanol) fixed L02 cells using 66052-1-Ig(Antithrombin III antibody) at dilution of 1:100 and Alexa Fluor 488-conjugated AffiniPure Goat Anti-Mouse IgG(H+L).