

For Research Use Only



# Serpin C1/Antithrombin III Monoclonal antibody, PBS Only

Catalog Number: 66052-1-PBS

## Basic Information

<b>Catalog Number:</b> 66052-1-PBS	<b>GenBank Accession Number:</b> BC022309	<b>Purification Method:</b> Protein A purification
<b>Size:</b> 100ug , Concentration: 1 mg/ml by Nanodrop;	<b>GeneID (NCBI):</b> 462	<b>CloneNo.:</b> 2B2E5
<b>Source:</b> Mouse	<b>UNIPROT ID:</b> P01008	
<b>Isotype:</b> IgG1	<b>Full Name:</b> serpin peptidase inhibitor, clade C (antithrombin), member 1	
<b>Immunogen Catalog Number:</b> AG9880	<b>Calculated MW:</b> 464 aa, 53 kDa	
	<b>Observed MW:</b> 53 kDa	

## Applications

**Tested Applications:**  
WB, IF, IHC, Indirect ELISA

**Species Specificity:**  
human, mouse, rat

## Background Information

SERPINC1, also named Antithrombin III or Antithrombin, is a plasma protease inhibitor and a member of the serpin superfamily. This protein inhibits thrombin as well as other activated serine proteases of the coagulation system, and it regulates the blood coagulation cascade. More than 120 mutations have been identified for this gene, many of which are known to cause antithrombin-III deficiency.

## Storage

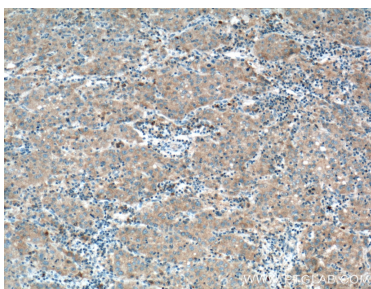
**Storage:**  
Store at -80°C.

**Storage Buffer:**  
PBS Only

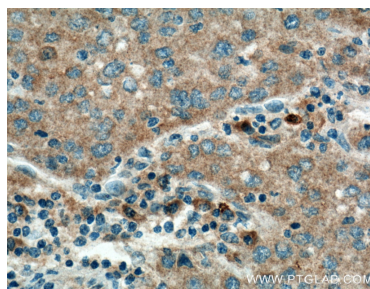
For technical support and original validation data for this product please contact:  
T: 1 (888) 4PTGLAB (1-888-478-4522) (toll free in USA), or 1(312) 455-8498 (outside USA)  
E: [proteintech@ptglab.com](mailto:proteintech@ptglab.com)  
W: [ptglab.com](http://ptglab.com)

This product is exclusively available under Proteintech Group brand and is not available to purchase from any other manufacturer.

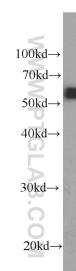
## Selected Validation Data



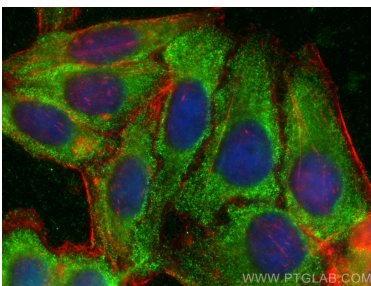
Immunohistochemical analysis of paraffin-embedded human liver cancer tissue slide using 66052-1-Ig (Antithrombin III antibody at dilution of 1:200 (under 10x lens). Heat mediated antigen retrieval with Tris-EDTA buffer (pH 9.0). This data was developed using the same antibody clone with 66052-1-PBS in a different storage buffer formulation.



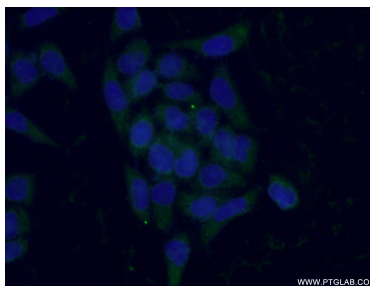
Immunohistochemical analysis of paraffin-embedded human liver cancer tissue slide using 66052-1-Ig (Antithrombin III antibody at dilution of 1:200 (under 40x lens). Heat mediated antigen retrieval with Tris-EDTA buffer (pH 9.0). This data was developed using the same antibody clone with 66052-1-PBS in a different storage buffer formulation.



L02 cells were subjected to SDS PAGE followed by western blot with 66052-1-Ig (Antithrombin III antibody at dilution of 1:1000 incubated at room temperature for 1.5 hours. This data was developed using the same antibody clone with 66052-1-PBS in a different storage buffer formulation.



Immunofluorescent analysis of (-20°C Ethanol) fixed HepG2 cells using Serpin C1/Antithrombin III antibody (66052-1-Ig, Clone: 2B2E5) at dilution of 1:200 and CoraLite®488-Conjugated AffiniPure Goat Anti-Mouse IgG(H+L), CL594-phalloidin (red). This data was developed using the same antibody clone with 66052-1-PBS in a different storage buffer formulation.



Immunofluorescent analysis of (-20°C Ethanol) fixed L02 cells using 66052-1-Ig(Antithrombin III antibody) at dilution of 1:100 and Alexa Fluor 488-conjugated AffiniPure Goat Anti-Mouse IgG(H+L). This data was developed using the same antibody clone with 66052-1-PBS in a different storage buffer formulation.