

For Research Use Only

PA2G4 Monoclonal antibody

Catalog Number: 66055-1-Ig

Featured Product

2 Publications



Basic Information

Catalog Number:

66055-1-Ig

Size:

150ul, Concentration: 2100 ug/ml by Nanodrop and 1040 ug/ml by Bradford method using BSA as the standard;

Source:

Mouse

Isotype:

IgG2a

Immunogen Catalog Number:

AG7850

GenBank Accession Number:

BC001951

GeneID (NCBI):

5036

UNIPROT ID:

Q9UQ80

Full Name:

proliferation-associated 2G4, 38kDa

Calculated MW:

44 kDa

Observed MW:

38-42 kDa, 48 kDa

Purification Method:

Protein A purification

CloneNo.:

3G10D9

Recommended Dilutions:

WB 1:20000-1:100000

IHC 1:50-1:500

IF/ICC 1:200-1:800

Applications

Tested Applications:

WB, IHC, IF/ICC, ELISA

Cited Applications:

WB

Species Specificity:

human, rat, mouse

Cited Species:

human

Note-IHC: suggested antigen retrieval with TE buffer pH 9.0; (*) Alternatively, antigen retrieval may be performed with citrate buffer pH 6.0

Positive Controls:

WB : PC-3 cells, HEK-293 cells, LNCaP cells, HeLa cells, Jurkat cells, K-562 cells, HSC-T6 cells, PC-12 cells, NIH/3T3 cells

IHC : human breast cancer tissue,

IF/ICC : HeLa cells,

Background Information

PA2G4 (EBP1), first identified as an ErbB3 binding protein, is a 38 kDa protein that is widely expressed in cultured cells and tissues. The presence of several functional domains such as a nuclear localization sequence (NLS), LxxLL and LxCxE suggests the involvement of Ebp1 in cell signaling pathways and gene transcription regulation. This antibody is a mouse mono-clonal antibody raised against full length PA2G4 of human origin.

Notable Publications

Author	Pubmed ID	Journal	Application
Kaosheng Lv	33711283	Cell Stem Cell	WB
Matteo Marchesini	38834613	Nat Commun	WB

Storage

Storage:

Store at -20°C. Stable for one year after shipment.

Storage Buffer:

PBS with 0.02% sodium azide and 50% glycerol pH 7.3.

Aliquoting is unnecessary for -20°C storage

*** 20ul sizes contain 0.1% BSA

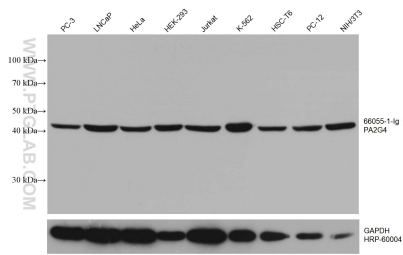
For technical support and original validation data for this product please contact:

T: 1 (888) 4PTGLAB (1-888-478-4522) (toll free in USA), or 1(312) 455-8498 (outside USA)

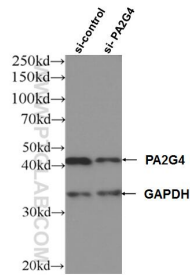
E: proteintech@ptglab.com
W: ptglab.com

This product is exclusively available under Proteintech Group brand and is not available to purchase from any other manufacturer.

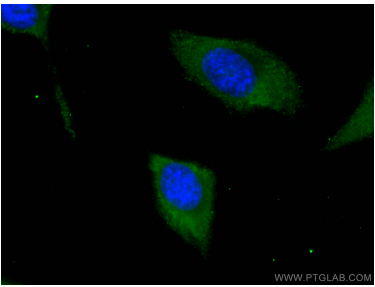
Selected Validation Data



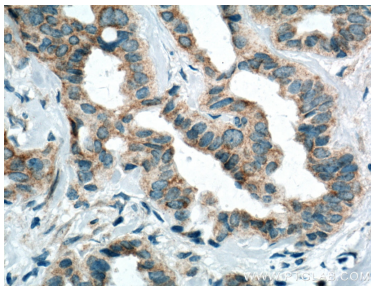
Various lysates were subjected to SDS PAGE followed by western blot with 66055-1-Ig (PA2G4 antibody) at dilution of 1:100000 incubated at room temperature for 1.5 hours. The membrane was stripped and reblotted with HRP-conjugated GAPDH Monoclonal antibody (HRP-60004) as loading control.



WB result of PA2G4 antibody (66055-1-Ig; 1:100000; incubated at room temperature for 1.5 hours) with sh-Control and sh-PA2G4 transfected HEK-293 cells.



Immunofluorescent analysis of (-20°C Ethanol) fixed HeLa cells using PA2G4 antibody (66055-1-Ig, Clone: 3G10D9) at dilution of 1:400 and CoraLite®488-Conjugated Goat Anti-Mouse IgG(H+L).



Immunohistochemical analysis of paraffin-embedded human breast cancer tissue slide using 66055-1-Ig (PA2G4 Antibody) at dilution of 1:200 (under 40x lens). Heat mediated antigen retrieval with Tris-EDTA buffer (pH 9.0).