

For Research Use Only

PA2G4 Monoclonal antibody, PBS Only (Detector)



Catalog Number: 66055-1-PBS

Featured Product

Basic Information

Catalog Number:

66055-1-PBS

Size:

100ug, Concentration: 1mg/ml by Nanodrop;

Source:

Mouse

Isotype:

IgG2a

Immunogen Catalog Number:

AG7850

GenBank Accession Number:

BC001951

GeneID (NCBI):

5036

UNIPROT ID:

Q9UQ80

Full Name:

proliferation-associated 2G4, 38kDa

Calculated MW:

44 kDa

Observed MW:

38-42 kDa, 48 kDa

Purification Method:

Protein A purification

CloneNo.:

3G10D9

Applications

Tested Applications:

WB, IF, IHC, Sandwich ELISA, Indirect ELISA

Species Specificity:

human, rat, mouse

Product Information

66055-1-PBS targets PA2G4 as part of a matched antibody pair:

MP50029-1: 66055-2-PBS capture and 66055-1-PBS detection (validated in Sandwich ELISA)

Unconjugated mouse monoclonal antibody pair in PBS only (BSA and azide free) storage buffer at a concentration of 1 mg/mL, ready for conjugation.

This conjugation ready format makes antibodies ideal for use in many applications including: ELISAs, multiplex assays requiring matched pairs, mass cytometry, and multiplex imaging applications. Antibody use should be optimized by the end user for each application and assay.

Background Information

PA2G4 (EBP1), first identified as an ErbB3 binding protein, is a 38 kDa protein that is widely expressed in cultured cells and tissues. The presence of several functional domains such as a nuclear localization sequence (NLS), LxxLL and LxCxE suggests the involvement of Ebp1 in cell signaling pathways and gene transcription regulation. This antibody is a mouse mono-clonal antibody raised against full length PA2G4 of human origin.

Storage

Storage:

Store at -80°C.

Storage Buffer:

PBS Only

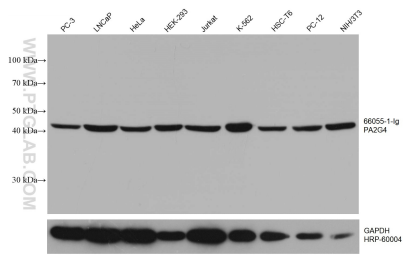
For technical support and original validation data for this product please contact:

T: 1 (888) 4PTGLAB (1-888-478-4522) (toll free in USA), or 1(312) 455-8498 (outside USA)

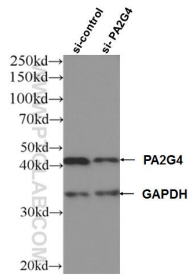
E: proteintech@ptglab.com
W: ptglab.com

This product is exclusively available under Proteintech Group brand and is not available to purchase from any other manufacturer.

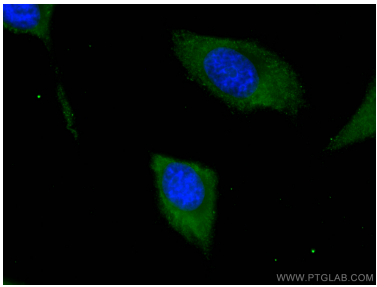
Selected Validation Data



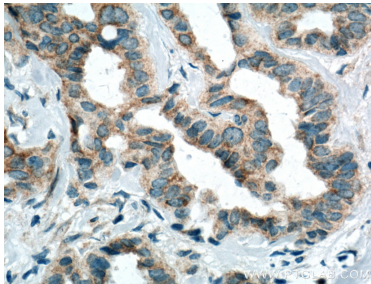
Various lysates were subjected to SDS PAGE followed by western blot with 66055-1-Ig (PA2G4 antibody) at dilution of 1:100000 incubated at room temperature for 1.5 hours. The membrane was stripped and reblotted with HRP-conjugated GAPDH Monoclonal antibody (HRP-60004) as loading control. This data was developed using the same antibody clone with 66055-1-PBS in a different storage buffer formulation.



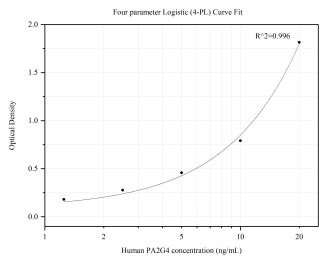
WB result of PA2G4 antibody (66055-1-Ig; 1:100000; incubated at room temperature for 1.5 hours) with sh-Control and sh-PA2G4 transfected HEK-293 cells. This data was developed using the same antibody clone with 66055-1-PBS in a different storage buffer formulation.



Immunofluorescent analysis of (-20°C Ethanol) fixed HeLa cells using PA2G4 antibody (66055-1-Ig, Clone: 3G10D9) at dilution of 1:400 and CoraLite®488-Conjugated AffiniPure Goat Anti-Mouse IgG(H+L). This data was developed using the same antibody clone with 66055-1-PBS in a different storage buffer formulation.



Immunohistochemical analysis of paraffin-embedded human breast cancer tissue slide using 66055-1-Ig (PA2G4 Antibody) at dilution of 1:200 (under 40x lens). Heat mediated antigen retrieval with Tris-EDTA buffer (pH 9.0). This data was developed using the same antibody clone with 66055-1-PBS in a different storage buffer formulation.



Sandwich ELISA standard curve of MP50029-1, PA2G4 Monoclonal Matched Antibody Pair, PBS Only. Capture antibody: 66055-2-PBS. Detection antibody: HRP-conjugated 66055-1-PBS. Standard: Ag7850. Range: 1.25-20 ng/mL