

For Research Use Only

# Cofilin Monoclonal antibody

Catalog Number: 66057-1-Ig

Featured Product

24 Publications



## Basic Information

Catalog Number:

66057-1-Ig

Size:

150ul, Concentration: 1000 ug/ml by Nanodrop;

Source:

Mouse

Isotype:

IgG2a

Immunogen Catalog Number:

AG18044

GenBank Accession Number:

BC012318

GeneID (NCBI):

1072

UNIPROT ID:

P23528

Full Name:

cofilin 1 (non-muscle)

Calculated MW:

18 kDa

Observed MW:

18 kDa

Purification Method:

Protein A purification

CloneNo.:

1G6A2

Recommended Dilutions:

WB 1:5000-1:50000

IHC 1:20-1:200

IF/ICC 1:400-1:1600

## Applications

Tested Applications:

WB, IHC, IF/ICC, ELISA

Cited Applications:

WB, IF, IP

Species Specificity:

human, mouse, rat, pig, rabbit

Cited Species:

human, mouse, rat

**Note-IHC: suggested antigen retrieval with TE buffer pH 9.0; (\*) Alternatively, antigen retrieval may be performed with citrate buffer pH 6.0**

Positive Controls:

**WB**: LNCaP cells, HeLa cells, HEK-293 cells, Jurkat cells, K-562 cells, pig brain tissue, rabbit brain tissue, rat brain tissue, mouse brain tissue, SH-SY5Y cells, A431 cells, PC-12 cells, Neuro-2a cells

**IHC**: human testis tissue, human lung cancer tissue, human ovary tumor tissue

**IF/ICC**: HeLa cells,

## Background Information

Cofilin is a ubiquitous actin-binding protein required for the reorganization of actin filaments. It is a member of ADF (actin-depolymerizing factor)/cofilin family that is a key regulator of actin dynamics and essential for cellular motility, cytokinesis, and endocytosis. Cofilin activity is tightly regulated by phosphorylation and dephosphorylation. Phosphorylation at Ser3 can inhibit its activity, also causing translocation from the nucleus to the cytoplasm.

## Notable Publications

Author	Pubmed ID	Journal	Application
Nicholas J F Gatford	34542148	Hum Mol Genet	WB
Rajeeve Sivadasan	27723745	Nat Neurosci	WB, IF
Sergi Marco	34819513	Nat Commun	WB

## Storage

Storage:

Store at -20°C. Stable for one year after shipment.

Storage Buffer:

PBS with 0.02% sodium azide and 50% glycerol pH 7.3.

Aliquoting is unnecessary for -20°C storage

\*\*\* 20ul sizes contain 0.1% BSA

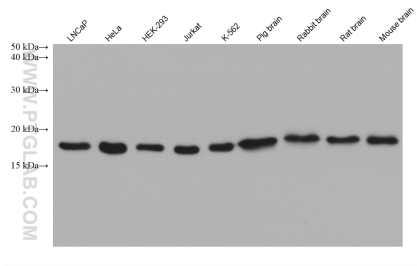
For technical support and original validation data for this product please contact:

T: 1 (888) 4PTGLAB (1-888-478-4522) (toll free in USA), or 1(312) 455-8498 (outside USA)

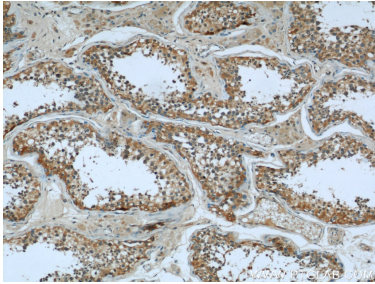
E: [proteintech@ptglab.com](mailto:proteintech@ptglab.com)  
W: [ptglab.com](http://ptglab.com)

This product is exclusively available under Proteintech Group brand and is not available to purchase from any other manufacturer.

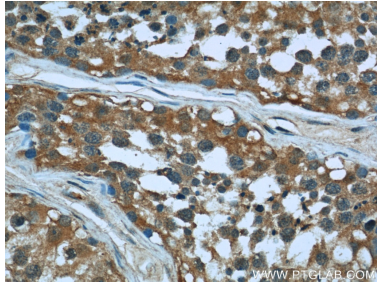
Selected Validation Data



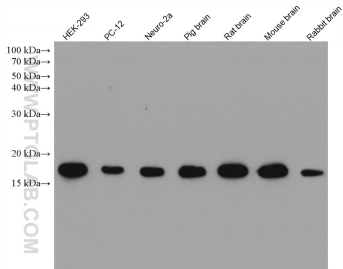
Various lysates were subjected to SDS PAGE followed by western blot with 66057-1-Ig (Cofilin antibody) at dilution of 1:20000 incubated at room temperature for 1.5 hours.



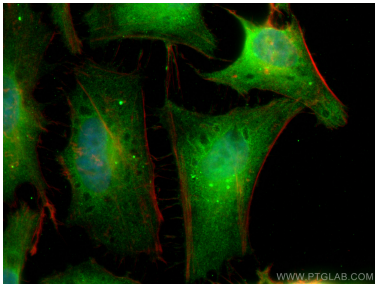
Immunohistochemical analysis of paraffin-embedded human testis using 66057-1-Ig(CFL1 antibody) at dilution of 1:50 (under 10x lens).



Immunohistochemical analysis of paraffin-embedded human testis using 66057-1-Ig(CFL1 antibody) at dilution of 1:50 (under 40x lens).



Various lysates were subjected to SDS PAGE followed by western blot with 66057-1-Ig (Cofilin antibody) at dilution of 1:20000 incubated at room temperature for 1.5 hours.



Immunofluorescent analysis of (4% PFA) fixed HeLa cells using Cofilin antibody (66057-1-Ig, Clone: 1G6A2 ) at dilution of 1:800 and Coralite® 488-Conjugated AffiniPure Goat Anti-Mouse IgG(H+L) (SA00013-1), CL594-phalloidin (red).