

RBM15 Monoclonal antibody

Catalog Number: 66059-1-Ig

Featured Product

6 Publications

Basic Information

Catalog Number:

66059-1-Ig

Size:

150ul, Concentration: 2100 ug/ml by Nanodrop and 987 ug/ml by Bradford method using BSA as the standard;

Source:

Mouse

Isotype:

IgG2a

Immunogen Catalog Number:

AG17970

GenBank Accession Number:

BC006397

GeneID (NCBI):

64783

UNIPROT ID:

Q96T37

Full Name:

RNA binding motif protein 15

Calculated MW:

105 kDa

Observed MW:

107 kDa

Purification Method:

Protein A purification

CloneNo.:

4A1A4

Recommended Dilutions:

WB 1:5000-1:50000

IP 0.5-4.0 ug for 1.0-3.0 mg of total protein lysate

IHC 1:200-1:800

IF/ICC 1:200-1:800

Applications

Tested Applications:

WB, IHC, IF/ICC, IP, ELISA

Cited Applications:

WB, IHC, IF, IP, RIP

Species Specificity:

human

Cited Species:

human, mouse

Note-IHC: suggested antigen retrieval with TE buffer pH 9.0; (*) Alternatively, antigen retrieval may be performed with citrate buffer pH 6.0

Positive Controls:

WB: A549 cells, human brain tissue, HeLa cells, human heart tissue, HEK-293 cells, HEK293 cells, MCF-7 cells, LNCaP cells, Jurkat cells, K-562 cells

IP: HEK-293 cells,

IHC: human breast cancer tissue, human liver cancer tissue

IF/ICC: HeLa cells,

Background Information

RNA-binding motif protein 15 (RBM15) belongs to the SPEN protein family, which have repressor function in several signaling pathway, and may bind to RNA through interaction with spliceosome components. It was first described as a 5' translocation partner of the MAL gene in t(1;22)(p13;q13) infant acute megakaryocytic leukemia, and it functions in murine hematopoiesis through modulating Notch-induced transcriptional activation, which play crucial roles in leukemogenesis. Decreasing RBM15 levels with RNA interference could inhibit the growth and proliferation, block the cell cycle, and induce apoptosis in CML cells.

Notable Publications

Author	Pubmed ID	Journal	Application
Li Zhang	26575292	Elife	WB
Yujie Li	34751492	J Gene Med	IHC
Yuxian Guo	34876574	Nat Commun	WB

Storage

Storage:

Store at -20°C. Stable for one year after shipment.

Storage Buffer:

PBS with 0.02% sodium azide and 50% glycerol pH 7.3.

Aliquoting is unnecessary for -20°C storage

*** 20ul sizes contain 0.1% BSA

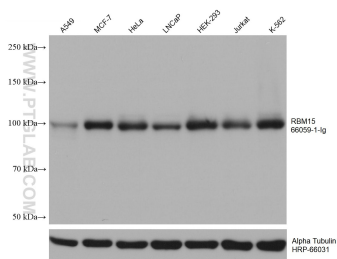
For technical support and original validation data for this product please contact:

T: 1 (888) 4PTGLAB (1-888-478-4522) (toll free in USA), or 1(312) 455-8498 (outside USA)

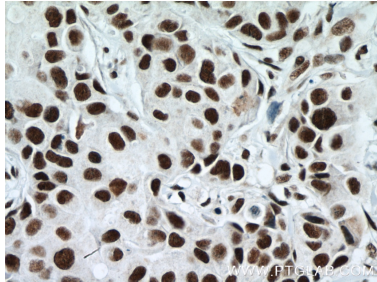
E: proteintech@ptglab.com
 W: ptglab.com

This product is exclusively available under Proteintech Group brand and is not available to purchase from any other manufacturer.

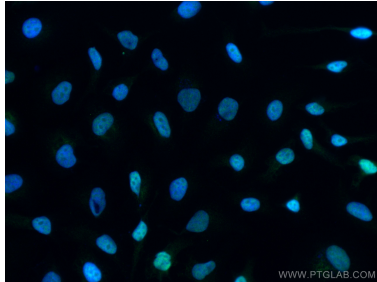
Selected Validation Data



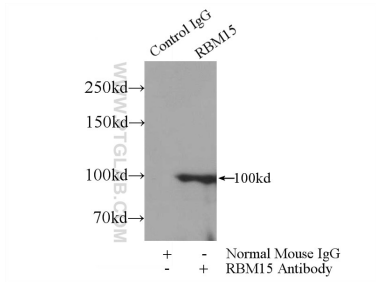
Various lysates were subjected to SDS PAGE followed by western blot with 66059-1-Ig (RBM15 antibody) at dilution of 1:10000 incubated at room temperature for 1.5 hours. The membrane was stripped and reblotted with HRP-conjugated Alpha Tubulin Monoclonal antibody (HRP-66031) as loading control.



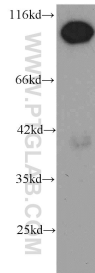
Immunohistochemical analysis of paraffin-embedded human breast cancer tissue slide using 66059-1-Ig (RBM15 antibody) at dilution of 1:400 (under 40x lens. Heat mediated antigen retrieval with Tris-EDTA buffer (pH 9.0)).



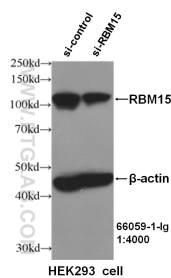
Immunofluorescent analysis of (4% PFA) fixed HeLa cells using RBM15 antibody (66059-1-Ig, Clone: 4A1A4) at dilution of 1:400 and CoraLite®488-Conjugated Goat Anti-Mouse IgG(H+L).



IP result of anti-RBM15 (IP:66059-1-Ig, 3ug; Detection:66059-1-Ig 1:500) with HEK-293 cells lysate 1800ug.



HeLa cells were subjected to SDS PAGE followed by western blot with 66059-1-Ig (RBM15 antibody) at dilution of 1:1000 incubated at room temperature for 1.5 hours.



WB result of RBM15 antibody (66059-1-Ig, 1:4000) with si-control and si-RBM15 transfected HEK293 cells.