

For Research Use Only

RBM15 Monoclonal antibody, PBS Only



Catalog Number: 66059-1-PBS

Featured Product

Basic Information

Catalog Number:

66059-1-PBS

Size:

100ug, Concentration: 1 mg/ml by Nanodrop;

Source:

Mouse

Isotype:

IgG2a

Immunogen Catalog Number:

AG17970

GenBank Accession Number:

BC006397

GeneID (NCBI):

64783

UNIPROT ID:

Q96T37

Full Name:

RNA binding motif protein 15

Calculated MW:

105 kDa

Observed MW:

107 kDa

Purification Method:

Protein A purification

CloneNo.:

4A1A4

Applications

Tested Applications:

WB, IP, IF, IHC, ELISA

Species Specificity:

human

Background Information

RNA-binding motif protein 15 (RBM15) belongs to the SPEN protein family, which have repressor function in several signaling pathway, and may bind to RNA through interaction with spliceosome components. It was first described as a 5' translocation partner of the MAL gene in t(1,22)(p13;q13) infant acute megakaryocytic leukemia, and it functions in murine hematopoiesis through modulating Notch-induced transcriptional activation, which play crucial roles in leukemogenesis. Decreasing RBM15 levels with RNA interference could inhibit the growth and proliferation, block the cell cycle, and induce apoptosis in CML cells.

Storage

Storage:

Store at -80°C.

Storage Buffer:

PBS only

For technical support and original validation data for this product please contact:

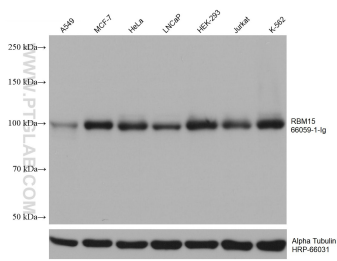
T: 1 (888) 4PTGLAB (1-888-478-4522) (toll free in USA), or 1(312) 455-8498 (outside USA)

E: proteintech@ptglab.com

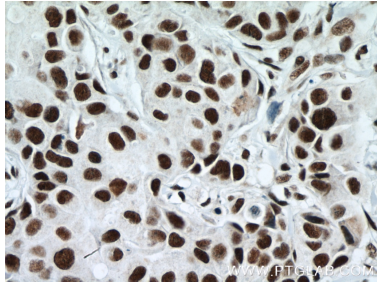
W: ptglab.com

This product is exclusively available under Proteintech Group brand and is not available to purchase from any other manufacturer.

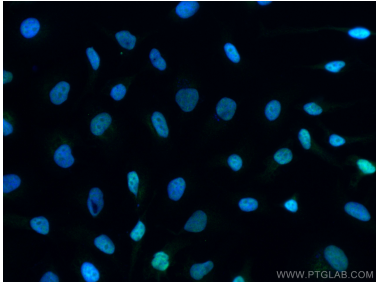
Selected Validation Data



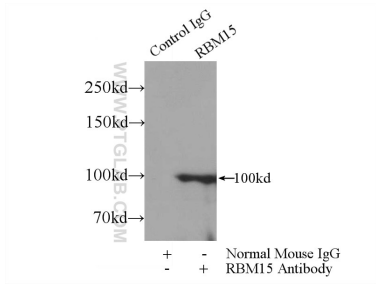
Various lysates were subjected to SDS PAGE followed by western blot with 66059-1-Ig (RBM15 antibody) at dilution of 1:10000 incubated at room temperature for 1.5 hours. The membrane was stripped and reblotted with HRP-conjugated Alpha Tubulin Monoclonal antibody (HRP-66031) as loading control. This data was developed using the same antibody clone with 66059-1-PBS in a different storage buffer formulation.



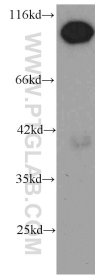
Immunohistochemical analysis of paraffin-embedded human breast cancer tissue slide using 66059-1-Ig (RBM15 antibody) at dilution of 1:400 (under 40x lens. Heat mediated antigen retrieval with Tris-EDTA buffer (pH 9.0). This data was developed using the same antibody clone with 66059-1-PBS in a different storage buffer formulation.



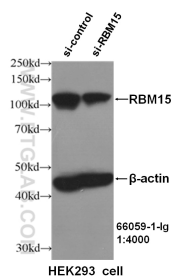
Immunofluorescent analysis of (4% PFA) fixed HeLa cells using RBM15 antibody (66059-1-Ig, Clone: 4A1A4) at dilution of 1:400 and CoraLite®488-Conjugated AffiniPure Goat Anti-Mouse IgG(H+L). This data was developed using the same antibody clone with 66059-1-PBS in a different storage buffer formulation.



IP result of anti-RBM15 (IP:66059-1-Ig, 3ug; Detection:66059-1-Ig 1:500) with HEK-293 cells lysate 1800ug. This data was developed using the same antibody clone with 66059-1-PBS in a different storage buffer formulation.



HeLa cells were subjected to SDS PAGE followed by western blot with 66059-1-Ig (RBM15 antibody) at dilution of 1:1000 incubated at room temperature for 1.5 hours. This data was developed using the same antibody clone with 66059-1-PBS in a different storage buffer formulation.



WB result of RBM15 antibody (66059-1-Ig, 1:4000) with si-control and si-RBM15 transfected HEK293 cells. This data was developed using the same antibody clone with 66059-1-PBS in a different storage buffer formulation.