

For Research Use Only

NTF2 Monoclonal antibody

Catalog Number: 66063-1-Ig

Featured Product

1 Publications



Basic Information

Catalog Number:

66063-1-Ig

Size:

150ul, Concentration: 1300 ug/ml by Nanodrop and 860 ug/ml by Bradford method using BSA as the standard;

Source:

Mouse

Isotype:

IgG1

Immunogen Catalog Number:

AG7879

GenBank Accession Number:

BC002348

GeneID (NCBI):

10204

UNIPROT ID:

P61970

Full Name:

nuclear transport factor 2

Calculated MW:

14 kDa

Observed MW:

13 kDa

Purification Method:

Protein G purification

CloneNo.:

4H7F9

Recommended Dilutions:

WB 1:500-1:2000

IHC 1:250-1:1000

Applications

Tested Applications:

WB, IHC, ELISA

Cited Applications:

WB, IHC

Species Specificity:

human

Cited Species:

human

Note-IHC: suggested antigen retrieval with TE buffer pH 9.0; (*) Alternatively, antigen retrieval may be performed with citrate buffer pH 6.0

Positive Controls:

WB : Hela cells, HepG2 cells, human heart tissue

IHC : human placenta tissue, human breast cancer tissue, human ovary tumor tissue

Background Information

NUTF2 (nuclear transport factor 2), also named as NTF2, is a cytosolic protein responsible for nuclear import of Ran, a small Ras-like GTPase involved in a number of critical cellular processes, including cell cycle regulation, chromatin organization during mitosis, reformation of the nuclear envelope following mitosis, and controlling the directionality of nucleocytoplasmic transport. Nucleocytoplasmic translocation of NTF2 is regulated in mammalian cells, and may involve a tyrosine and/or threonine kinase-dependent signal transduction mechanism(s) (PMID: 22880006). The MW of this protein is 14 kDa, and this antibody specially recognises the 14 kDa protein.

Notable Publications

Author	Pubmed ID	Journal	Application
Guangxu Xuan	35785175	Front Oncol	WB,IHC

Storage

Storage:

Store at -20°C. Stable for one year after shipment.

Storage Buffer:

PBS with 0.02% sodium azide and 50% glycerol, pH7.3

Aliquoting is unnecessary for -20°C storage

*** 20ul sizes contain 0.1% BSA

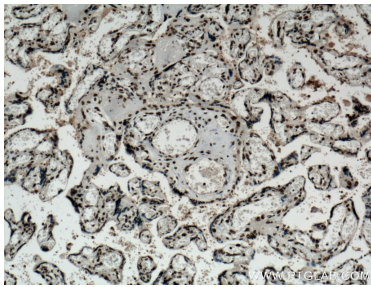
For technical support and original validation data for this product please contact:

T: 1 (888) 4PTGLAB (1-888-478-4522) (toll free in USA), or 1(312) 455-8498 (outside USA)

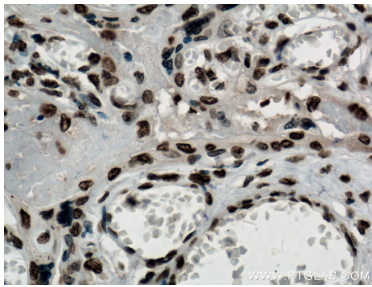
E: proteintech@ptglab.com
W: ptglab.com

This product is exclusively available under Proteintech Group brand and is not available to purchase from any other manufacturer.

Selected Validation Data



Immunohistochemical analysis of paraffin-embedded human placenta tissue slide using 66063-1-Ig (NTF2 antibody) at dilution of 1:500 (under 10x lens. Heat mediated antigen retrieval with Tris-EDTA buffer (pH 9.0)).



Immunohistochemical analysis of paraffin-embedded human placenta tissue slide using 66063-1-Ig (NTF2 antibody) at dilution of 1:500 (under 40x lens. Heat mediated antigen retrieval with Tris-EDTA buffer (pH 9.0)).



HeLa cells were subjected to SDS PAGE followed by western blot with 66063-1-Ig (NTF2 antibody) at dilution of 1:1000 incubated at room temperature for 1.5 hours.