

For Research Use Only

NTF2 Monoclonal antibody

Catalog Number: 66063-1-Ig

Featured Product

1 Publications



Basic Information

Catalog Number: 66063-1-Ig	GenBank Accession Number: BC002348	Purification Method: Protein G purification
Size: 150ul , Concentration: 1300 µg/ml by Nanodrop and 860 µg/ml by Bradford method using BSA as the standard;	GeneID (NCBI): 10204	CloneNo.: 4H7F9
Source: Mouse	Full Name: nuclear transport factor 2	Recommended Dilutions: WB 1:500-1:2000 IHC 1:250-1:1000
Isotype: IgG1	Calculated MW: 14 kDa	
Immunogen Catalog Number: AG7879	Observed MW: 13 kDa	

Applications

Tested Applications: IHC, WB, ELISA	Positive Controls:
Cited Applications: IHC, WB	WB : Hela cells, HepG2 cells, human heart tissue
Species Specificity: human	IHC : human placenta tissue, human breast cancer tissue, human ovary tumor tissue
Cited Species: human	
Note-IHC: suggested antigen retrieval with TE buffer pH 9.0; (*) Alternatively, antigen retrieval may be performed with citrate buffer pH 6.0	

Background Information

NUTF2 (nuclear transport factor 2), also named as NTF2, is a cytosolic protein responsible for nuclear import of Ran, a small Ras-like GTPase involved in a number of critical cellular processes, including cell cycle regulation, chromatin organization during mitosis, reformation of the nuclear envelope following mitosis, and controlling the directionality of nucleocytoplasmic transport. Nucleocytoplasmic translocation of NTF2 is regulated in mammalian cells, and may involve a tyrosine and/or threonine kinase-dependent signal transduction mechanism(s) (PMID: 22880006). The MW of this protein is 14 kDa, and this antibody specially recognises the 14 kDa protein.

Notable Publications

Author	Pubmed ID	Journal	Application
Guangxu Xuan	35785175	Front Oncol	WB,IHC

Storage

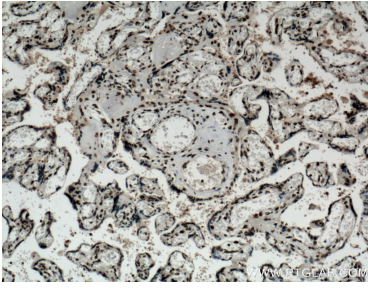
Storage:
Store at -20°C. Stable for one year after shipment.
Storage Buffer:
PBS with 0.02% sodium azide and 50% glycerol pH 7.3.
Aliquoting is unnecessary for -20°C storage

*** 20ul sizes contain 0.1% BSA

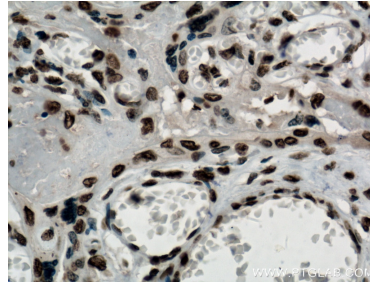
For technical support and original validation data for this product please contact:
T: 1 (888) 4PTGLAB (1-888-478-4522) (toll free in USA), or 1(312) 455-8498 (outside USA)
E: proteintech@ptglab.com
W: ptglab.com

This product is exclusively available under Proteintech Group brand and is not available to purchase from any other manufacturer.

Selected Validation Data



Immunohistochemical analysis of paraffin-embedded human placenta tissue slide using 66063-1-Ig (NTF2 antibody) at dilution of 1:500 (under 10x lens. Heat mediated antigen retrieval with Tris-EDTA buffer (pH 9.0).



Immunohistochemical analysis of paraffin-embedded human placenta tissue slide using 66063-1-Ig (NTF2 antibody) at dilution of 1:500 (under 40x lens. Heat mediated antigen retrieval with Tris-EDTA buffer (pH 9.0).



HeLa cells were subjected to SDS PAGE followed by western blot with 66063-1-Ig (NTF2 antibody) at dilution of 1:1000 incubated at room temperature for 1.5 hours.