

For Research Use Only

NTF2 Monoclonal antibody, PBS Only



Catalog Number: 66063-1-PBS

Featured Product

Basic Information

Catalog Number:

66063-1-PBS

Size:

100ug , Concentration: 1 mg/ml by Nanodrop;

Source:

Mouse

Isotype:

IgG1

Immunogen Catalog Number:

AG7879

GenBank Accession Number:

BC002348

GeneID (NCBI):

10204

UNIPROT ID:

P61970

Full Name:

nuclear transport factor 2

Calculated MW:

14 kDa

Observed MW:

13 kDa

Purification Method:

Protein G purification

CloneNo.:

4H7F9

Applications

Tested Applications:

WB, IHC, Indirect ELISA

Species Specificity:

human

Background Information

NUTF2 (nuclear transport factor 2), also named as NTF2, is a cytosolic protein responsible for nuclear import of Ran, a small Ras-like GTPase involved in a number of critical cellular processes, including cell cycle regulation, chromatin organization during mitosis, reformation of the nuclear envelope following mitosis, and controlling the directionality of nucleocytoplasmic transport. Nucleocytoplasmic translocation of NTF2 is regulated in mammalian cells, and may involve a tyrosine and/or threonine kinase-dependent signal transduction mechanism(s) (PMID: 22880006). The MW of this protein is 14 kDa, and this antibody specially recognises the 14 kDa protein.

Storage

Storage:

Store at -80°C.

Storage Buffer:

PBS Only

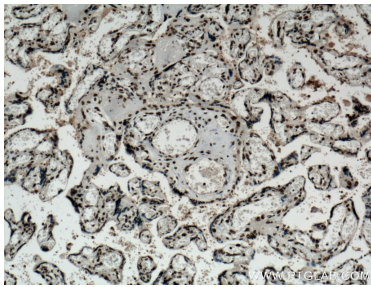
For technical support and original validation data for this product please contact:

T: 1 (888) 4PTGLAB (1-888-478-4522) (toll free in USA), or 1(312) 455-8498 (outside USA)

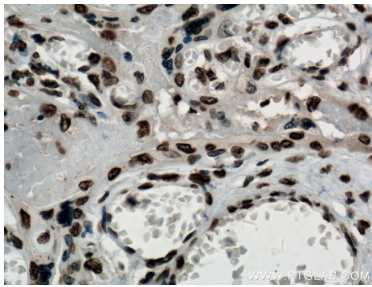
E: proteintech@ptglab.com
W: ptglab.com

This product is exclusively available under Proteintech Group brand and is not available to purchase from any other manufacturer.

Selected Validation Data



Immunohistochemical analysis of paraffin-embedded human placenta tissue slide using 66063-1-Ig (NTF2 antibody) at dilution of 1:500 (under 10x lens. Heat mediated antigen retrieval with Tris-EDTA buffer (pH 9.0). This data was developed using the same antibody clone with 66063-1-PBS in a different storage buffer formulation.



Immunohistochemical analysis of paraffin-embedded human placenta tissue slide using 66063-1-Ig (NTF2 antibody) at dilution of 1:500 (under 40x lens. Heat mediated antigen retrieval with Tris-EDTA buffer (pH 9.0). This data was developed using the same antibody clone with 66063-1-PBS in a different storage buffer formulation.



HeLa cells were subjected to SDS PAGE followed by western blot with 66063-1-Ig (NTF2 antibody) at dilution of 1:1000 incubated at room temperature for 1.5 hours. This data was developed using the same antibody clone with 66063-1-PBS in a different storage buffer formulation.