

For Research Use Only

# Caveolin-1 Monoclonal antibody, PBS Only

Catalog Number: 66067-1-PBS

Featured Product



## Basic Information

Catalog Number:

66067-1-PBS

Size:

100ug, Concentration: 1mg/ml by Nanodrop;

Source:

Mouse

Isotype:

IgG1

Immunogen Catalog Number:

AG8049

GenBank Accession Number:

BC006432

GeneID (NCBI):

857

UNIPROT ID:

Q03135

Full Name:

caveolin 1, caveolae protein, 22kDa

Calculated MW:

22 kDa

Observed MW:

20-25 kDa

Purification Method:

Protein A purification

CloneNo.:

6C2B2

## Applications

Tested Applications:

WB, IHC, IF/ICC, IF-P, ELISA

Species Specificity:

human, mouse, rat, pig

## Background Information

Caveolin-1 (CAV1), a multifunctional protein, is the main constituent molecule of caveolae and represents a scaffolding molecule for several signaling molecules including epidermal growth factor receptor (PMID: 19641024). Several studies have implicated that a reduced expression of CAV1 was found in cancers including head and neck carcinoma (PMID: 19002186). However, other studies recognize CAV1 as a tumor promoter because CAV1 is overexpressed in various kinds of cancers, especially in oral cancer (PMID: 20558341). Recent study also show that CAV1 is involved in gastric Cancer (PMID: 25339030).

## Storage

Storage:

Store at -80°C.

Storage Buffer:

PBS Only

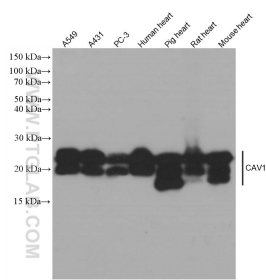
For technical support and original validation data for this product please contact:

T: 1 (888) 4PTGLAB (1-888-478-4522) (toll free in USA), or 1(312) 455-8498 (outside USA)

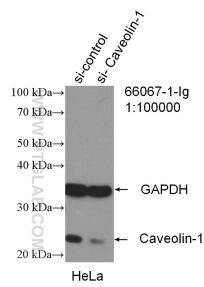
E: [proteintech@ptglab.com](mailto:proteintech@ptglab.com)  
W: [ptglab.com](http://ptglab.com)

This product is exclusively available under Proteintech Group brand and is not available to purchase from any other manufacturer.

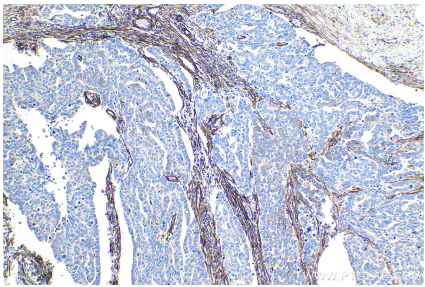
Selected Validation Data



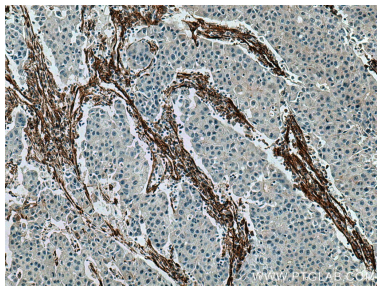
Various lysates were subjected to SDS PAGE followed by western blot with 66067-1-Ig (Caveolin-1 antibody) at dilution of 1:100000 incubated at room temperature for 1.5 hours. This data was developed using the same antibody clone with 66067-1-PBS in a different storage buffer formulation.



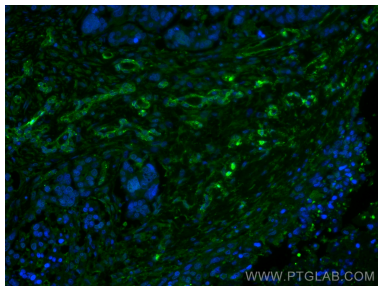
WB result of Caveolin-1 antibody (66067-1-Ig; 1:100000; incubated at room temperature for 1.5 hours) with sh-Control and sh-Caveolin-1 transfected HeLa cells. This data was developed using the same antibody clone with 66067-1-PBS in a different storage buffer formulation.



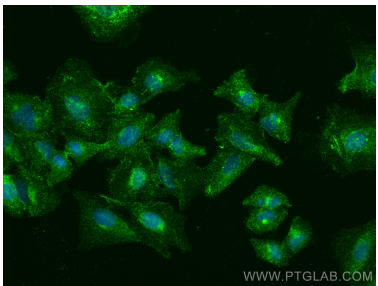
Immunohistochemical analysis of paraffin-embedded human ovary tumor tissue slide using 66067-1-Ig (Caveolin-1 antibody) at dilution of 1:4000 (under 10x lens). Heat mediated antigen retrieval with Tris-EDTA buffer (pH 9.0). This data was developed using the same antibody clone with 66067-1-PBS in a different storage buffer formulation.



Immunohistochemical analysis of paraffin-embedded human breast cancer tissue slide using 66067-1-Ig (Caveolin-1 antibody) at dilution of 1:5000 (under 10x lens). Heat mediated antigen retrieval with Tris-EDTA buffer (pH 9.0). This data was developed using the same antibody clone with 66067-1-PBS in a different storage buffer formulation.



Immunofluorescent analysis of (4% PFA) fixed human liver cancer tissue using Caveolin-1 antibody (66067-1-Ig, Clone: 6C2B2 ) at dilution of 1:400 and CoraLite®488-Conjugated AffiniPure Goat Anti-Mouse IgG(H+L). This data was developed using the same antibody clone with 66067-1-PBS in a different storage buffer formulation.



Immunofluorescent analysis of (4% PFA) fixed A549 cells using Caveolin-1 antibody (66067-1-Ig, Clone: 6C2B2 ) at dilution of 1:400 and CoraLite®488-Conjugated Goat Anti-Mouse IgG(H+L) (SA00013-1). This data was developed using the same antibody clone with 66067-1-PBS in a different storage buffer formulation.