

For Research Use Only

EPLIN Monoclonal antibody

Catalog Number: 66071-1-Ig

Featured Product

2 Publications



Basic Information

Catalog Number:

66071-1-Ig

Size:

150ul, Concentration: 553 ug/ml by Bradford method using BSA as the standard;

Source:

Mouse

Isotype:

IgG1

Immunogen Catalog Number:

AG13288

GenBank Accession Number:

BC001247

GeneID (NCBI):

51474

UNIPROT ID:

Q9UHB6

Full Name:

LIM domain and actin binding 1

Calculated MW:

85 kDa

Observed MW:

90 kDa, 110 kDa

Purification Method:

Protein A purification

CloneNo.:

6E6E6

Recommended Dilutions:

WB 1:2000-1:10000

IHC 1:20-1:200

IF/ICC 1:20-1:200

Applications

Tested Applications:

WB, IHC, IF/ICC, ELISA

Cited Applications:

WB, IHC, IF, CoIP

Species Specificity:

human, rat

Cited Species:

human, mouse

Note-IHC: suggested antigen retrieval with TE buffer pH 9.0; (*) Alternatively, antigen retrieval may be performed with citrate buffer pH 6.0

Positive Controls:

WB : HeLa cells, A431 cells, COLO 320 cells, HEK-293 cells, human brain tissue, HaCaT cells, SCaBER cells, MDA-MB-231 cells, SK-BR-3 cells, HT-29 cells, pig colon tissue, rat colon tissue, HSC-T6 cells, ROS1728 cells

IHC : human heart tissue,

IF/ICC : HeLa cells,

Background Information

EPLIN is a cytoskeletal protein that is preferentially expressed in epithelial cells and is implicated in regulation of cytoskeletal dynamics and cytokinesis. In human, there are two known isoforms, EPLIN-a and -b, generated by alternative promoter usage from a single gene. EPLIN-a expression is often down-regulated in cancerous cells and tissues. This antibody recognizes both of isoforms of EPLIN.

Notable Publications

Author	Pubmed ID	Journal	Application
Fuji Yang	39921472	Adv Sci (Weinh)	WB,IHC,IF
Shihui Li	38822260	Cell Mol Biol Lett	WB,IHC,IF,CoIP

Storage

Storage:

Store at -20°C. Stable for one year after shipment.

Storage Buffer:

PBS with 0.02% sodium azide and 50% glycerol, pH7.3

Aliquoting is unnecessary for -20°C storage

*** 20ul sizes contain 0.1% BSA

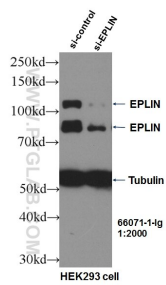
For technical support and original validation data for this product please contact:

T: 1 (888) 4PTGLAB (1-888-478-4522) (toll free in USA), or 1(312) 455-8498 (outside USA)

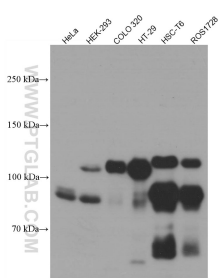
E: proteintech@ptglab.com
W: ptglab.com

This product is exclusively available under Proteintech Group brand and is not available to purchase from any other manufacturer.

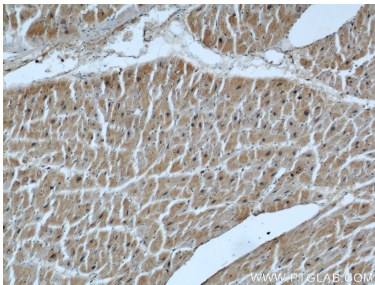
Selected Validation Data



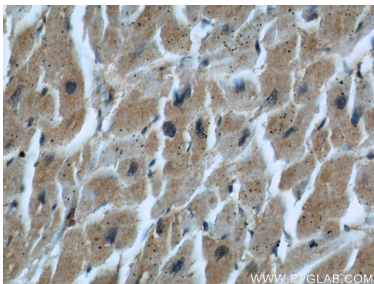
WB result of EPLIN antibody (66071-1-Ig, 1:2000) with si-Control and si-EPLIN transfected HEK293 cells.



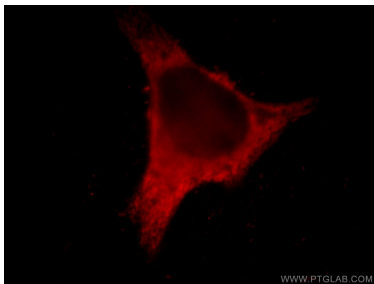
Various lysates were subjected to SDS PAGE followed by western blot with 66071-1-Ig (EPLIN antibody) at dilution of 1:5000 incubated at room temperature for 1.5 hours.



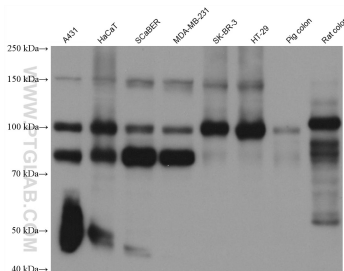
Immunohistochemical analysis of paraffin-embedded human heart using 66071-1-Ig(EPLIN antibody) at dilution of 1:50 (under 10x lens).



Immunohistochemical analysis of paraffin-embedded human heart using 66071-1-Ig(EPLIN antibody) at dilution of 1:50 (under 40x lens).



Immunofluorescent analysis of HeLa cells using 66071-1-Ig (EPLIN antibody) at dilution of 1:50 and Rhodamine-Goat anti-Mouse IgG.



Various lysates were subjected to SDS PAGE followed by western blot with 66071-1-Ig (EPLIN antibody) at dilution of 1:20000 incubated at room temperature for 1.5 hours.