

For Research Use Only

CPT1C Monoclonal antibody

Catalog Number: 66072-1-Ig

Featured Product

8 Publications



Basic Information

| | | |
|---|--|--|
| Catalog Number: 66072-1-Ig | GenBank Accession Number: BC029104 | Purification Method: Protein A purification |
| Size: 150ul , Concentration: 1700 ug/ml by Nanodrop and 980 ug/ml by Bradford method using BSA as the standard; | GeneID (NCBI): 126129 | CloneNo.: 5D11B5 |
| Source: Mouse | UNIPROT ID: Q8TCG5 | Recommended Dilutions: WB 1:500-1:1000 IHC 1:20-1:200 |
| Isotype: IgG2b | Full Name: carnitine palmitoyltransferase 1C | |
| Immunogen Catalog Number: AG17963 | Calculated MW: 792 aa, 90 kDa | |
| | Observed MW: 82 kDa | |

Applications

| | |
|--|---|
| Tested Applications: WB, IHC, ELISA | Positive Controls: WB : Human brain, human brain tissue IHC : human testis tissue, |
| Cited Applications: WB, IP, IF, IHC | |
| Species Specificity: human, pig | |
| Cited Species: human, rat, mouse, pig | |
| Note-IHC: suggested antigen retrieval with TE buffer pH 9.0; (*) Alternatively, antigen retrieval may be performed with citrate buffer pH 6.0 | |

Background Information

CPT1C, also named as CATL1, CPTI-B and B-CPTI, belongs to the carnitine/choline acetyltransferase family. Carnitine palmitoyltransferase (CPT) deficiencies are common disorders of mitochondrial fatty acid oxidation. The CPT system is made up of two separate proteins located in the outer (CPT1) and inner (CPT2) mitochondrial membranes. CPT1C is an active forms of related brain-type carnitine palmitoyltransferase I. CPT1C may be a regulated target of malonyl-CoA that relays the "malonyl-CoA signal" in hypothalamic neurons that express the orexigenic and anorexigenic neuropeptides that regulate food intake and peripheral energy expenditure. (PMID: 17018521) This antibody can bind the close sequences genes.

Notable Publications

| Author | Pubmed ID | Journal | Application |
|------------|-----------|-----------------------|-------------|
| Zhao Yang | 36120828 | J Biochem Mol Toxicol | WB |
| Lulin Tan | 35695092 | Epigenetics | WB |
| Ting Zhang | 35057851 | Cancer Metab | WB,IF |

Storage

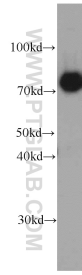
Storage:
Store at -20°C. Stable for one year after shipment.
Storage Buffer:
PBS with 0.02% sodium azide and 50% glycerol pH 7.3.
Aliquoting is unnecessary for -20°C storage

*** 20ul sizes contain 0.1% BSA

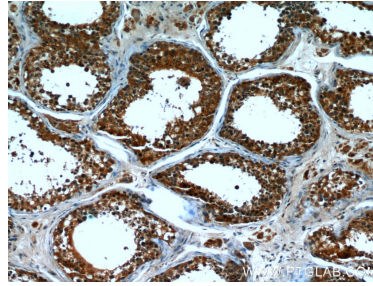
For technical support and original validation data for this product please contact:
T: 1 (888) 4PTGLAB (1-888-478-4522) (toll free in USA), or 1(312) 455-8498 (outside USA)
E: proteintech@ptglab.com
W: ptglab.com

This product is exclusively available under Proteintech Group brand and is not available to purchase from any other manufacturer.

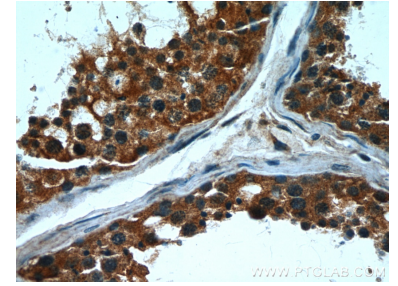
Selected Validation Data



human brain tissue were subjected to SDS PAGE followed by western blot with 66072-1-Ig (CPT1C antibody) at dilution of 1:500 incubated at room temperature for 1.5 hours.



Immunohistochemical analysis of paraffin-embedded human testis using 66072-1-Ig (CPT1C antibody) at dilution of 1:50 (under 10x lens).



Immunohistochemical analysis of paraffin-embedded human testis using 66072-1-Ig (CPT1C antibody) at dilution of 1:50 (under 40x lens).