

For Research Use Only

# TTL Monoclonal antibody, PBS Only

Catalog Number: 66076-1-PBS

Featured Product



## Basic Information

Catalog Number:

66076-1-PBS

Size:

100ug, Concentration: 1 mg/ml by Nanodrop;

Source:

Mouse

Isotype:

IgG2b

Immunogen Catalog Number:

AG4708

GenBank Accession Number:

BC036819

GeneID (NCBI):

150465

UNIPROT ID:

Q8NG68

Full Name:

tubulin tyrosine ligase

Calculated MW:

377 aa, 43 kDa

Observed MW:

43 kDa

Purification Method:

Protein A purification

CloneNo.:

2E5F8

## Applications

Tested Applications:

WB, IHC, Indirect ELISA

Species Specificity:

human, mouse, rat, pig

## Background Information

Tubulin-tyrosine ligase (TTL) is the enzyme responsible for the reversible addition of a tyrosine residue at the carboxyl end of alpha-tubulin. TTL forms stable complexes with tubulin and inhibit tubulin polymerization. TTL is frequently suppressed during tumor progression with resulting accumulation of deetyrosinated alpha-tubulin in tumor cells. TTL suppression in human cancers is associated with increased tumor aggressiveness.

## Storage

Storage:

Store at -80°C.

Storage Buffer:

PBS Only

For technical support and original validation data for this product please contact:

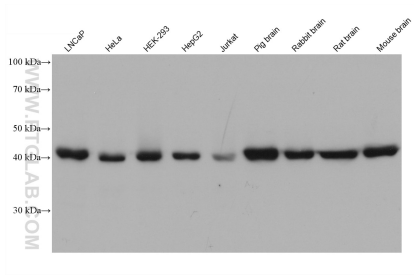
T: 1 (888) 4PTGLAB (1-888-478-4522) (toll free in USA), or 1(312) 455-8498 (outside USA)

E: [proteintech@ptglab.com](mailto:proteintech@ptglab.com)

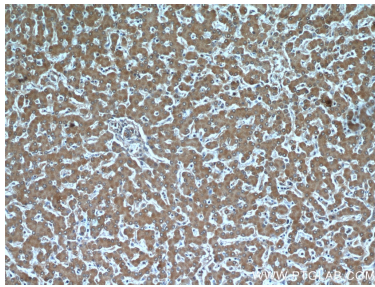
W: [ptglab.com](http://ptglab.com)

This product is exclusively available under Proteintech Group brand and is not available to purchase from any other manufacturer.

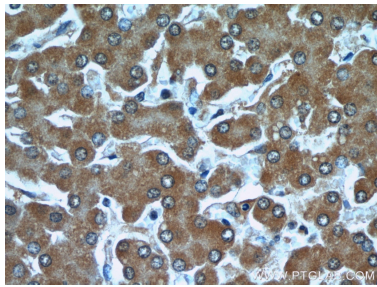
## Selected Validation Data



Various lysates were subjected to SDS PAGE followed by western blot with 66076-1-Ig (TTL antibody) at dilution of 1:10000 incubated at room temperature for 1.5 hours. This data was developed using the same antibody clone with 66076-1-PBS in a different storage buffer formulation.



Immunohistochemical analysis of paraffin-embedded human liver using 66076-1-Ig(TTL antibody) at dilution of 1:50 (under 10x lens). This data was developed using the same antibody clone with 66076-1-PBS in a different storage buffer formulation.



Immunohistochemical analysis of paraffin-embedded human liver using 66076-1-Ig(TTL antibody) at dilution of 1:50 (under 40x lens). This data was developed using the same antibody clone with 66076-1-PBS in a different storage buffer formulation.