

For Research Use Only

TELO2 Monoclonal antibody

Catalog Number: 66077-1-Ig 1 Publications



Basic Information

Catalog Number: 66077-1-Ig	GenBank Accession Number: BC017188	Purification Method: Protein G purification
Size: 150ul, Concentration: 3800 µg/ml by Nanodrop and 1680 µg/ml by Bradford method using BSA as the standard;	GeneID (NCBI): 9894	CloneNo.: 3H10F4
Source: Mouse	Full Name: TEL2, telomere maintenance 2, homolog (S. cerevisiae)	Recommended Dilutions: WB 1:1000-1:4000 IP 0.5-4.0 ug for IP and 1:500-1:1000 for WB
Isotype: IgG1	Calculated MW: 837 aa, 92 kDa	IHC 1:20-1:200 IF 1:10-1:100
Immunogen Catalog Number: AG8834	Observed MW: 92 kDa	

Applications

Tested Applications: IF, IHC, IP, WB, ELISA	Positive Controls: WB: Y79 cells, L02 cells, A431 cells, HeLa cells, HEK-293 cells, MCF-7 cells, Jurkat cells, HSC-T6 cells IP: HepG2 cells, IHC: human kidney tissue, human liver cancer tissue IF: HepG2 cells,
Cited Applications: WB	
Species Specificity: human, rat	
Cited Species: human	

Note-IHC: suggested antigen retrieval with TE buffer pH 9.0; (*) Alternatively, antigen retrieval may be performed with citrate buffer pH 6.0

Background Information

TELO2 gene encodes a telomere length regulation protein TEL2 homolog. TELO2 may be involved in telomere length regulation and can form TTT complex with TTI1 and TTI2. TTT complex is required to stabilize protein levels of PIKK family proteins and is involved in the cellular resistance to DNA damage stresses, like ionizing radiation (IR), and ultraviolet (UV). The activity of mTORC1 and mTORC2 complexes, which regulate cell growth and survival in response to nutrient and hormonal signals, can be promoted, stabilized and maintained by TELO2.

Notable Publications

Author	Pubmed ID	Journal	Application
Feng Rao	24657168	Mol Cell	WB

Storage

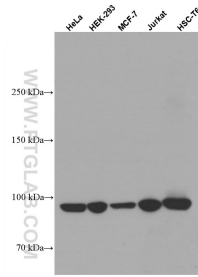
Storage:
Store at -20°C. Stable for one year after shipment.
Storage Buffer:
PBS with 0.02% sodium azide and 50% glycerol pH 7.3.
Aliquoting is unnecessary for -20°C storage

*** 20ul sizes contain 0.1% BSA

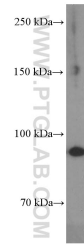
For technical support and original validation data for this product please contact:
T: 1 (888) 4PTGLAB (1-888-478-4522) (toll free in USA), or 1(312) 455-8498 (outside USA)
E: proteintech@ptglab.com
W: ptglab.com

This product is exclusively available under Proteintech Group brand and is not available to purchase from any other manufacturer.

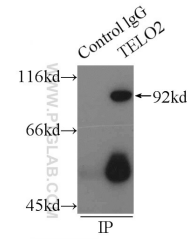
Selected Validation Data



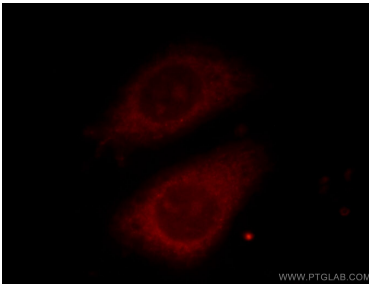
Various lysates were subjected to SDS PAGE followed by western blot with 66077-1-Ig (TELO2 antibody) at dilution of 1:5000 incubated at room temperature for 1.5 hours.



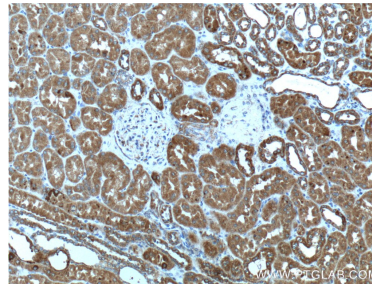
Y79 cells were subjected to SDS PAGE followed by western blot with 66077-1-Ig (TELO2 Antibody) at dilution of 1:2000 incubated at room temperature for 1.5 hours.



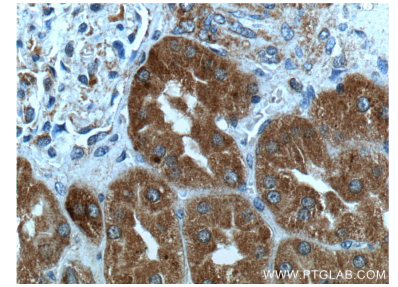
IP Result of anti-TELO2 (IP:66077-1-Ig, 4ug; Detection:66077-1-Ig 1:500) with HepG2 cells lysate 2900ug.



Immunofluorescent analysis of () fixed HepG2 cells using 66077-1-Ig (TELO2 antibody) at dilution of 1:25.



Immunohistochemical analysis of paraffin-embedded human kidney tissue slide using 66077-1-Ig (TELO2 Antibody) at dilution of 1:200 (under 10x lens).



Immunohistochemical analysis of paraffin-embedded human kidney tissue slide using 66077-1-Ig (TELO2 Antibody) at dilution of 1:200 (under 40x lens).