

For Research Use Only

Alpha 1 antichymotrypsin Monoclonal antibody, PBS Only

Catalog Number: 66078-1-PBS



Basic Information

Catalog Number: 66078-1-PBS	GenBank Accession Number: BC010530	Purification Method: Protein A purification
Size: 100ug , Concentration: 1mg/ml by Nanodrop;	GeneID (NCBI): 12	CloneNo.: 3F2F10
Source: Mouse	UNIPROT ID: P01011	
Isotype: IgG2b	Full Name: serpin peptidase inhibitor, clade A (alpha-1 antiproteinase, antitrypsin), member 3	
Immunogen Catalog Number: AG2830	Calculated MW: 448 aa, 48 kDa	
	Observed MW: 60 kDa	

Applications

Tested Applications:
WB, IHC, IF-P, Indirect ELISA

Species Specificity:
human, pig

Background Information

Human SerpinA3, also known as Alpha 1-antichymotrypsin (AACT), is a member of the serine protease inhibitor class, and is a plasma alpha globulin glycoprotein which increases in the blood during the inflammatory process. SerpinA3, is also an inhibitor of neutrophil cathepsin G, mast cell chymases and pancreatic chymotrypsin. SerpinA3 is produced primarily in the liver, and is identified as an acute-phase inflammatory protein. SerpinA3 deficiency has been associated with liver disease. SerpinA3 has also been implicated in the pathology of a number of devastating human diseases including chronic obstructive pulmonary disease (COPD), Parkinson's disease (PD), Alzheimer's disease (AD), Stroke, Cystic Fibrosis, Cerebral Haemorrhage and Multiple System Atrophy.

Storage

Storage:
Store at -80°C.

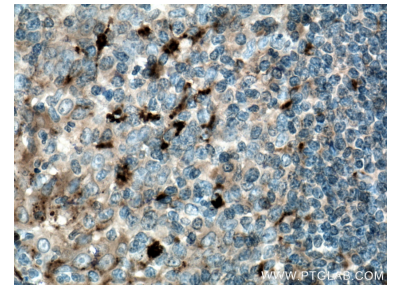
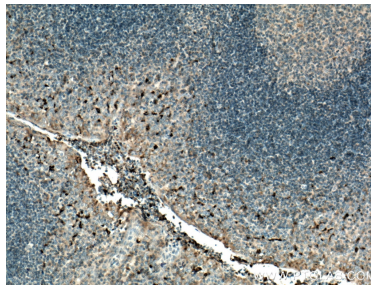
Storage Buffer:
PBS Only

For technical support and original validation data for this product please contact:
T: 1 (888) 4PTGLAB (1-888-478-4522) (toll free in USA), or 1(312) 455-8498 (outside USA)
E: proteintech@ptglab.com
W: ptglab.com

This product is exclusively available under Proteintech Group brand and is not available to purchase from any other manufacturer.

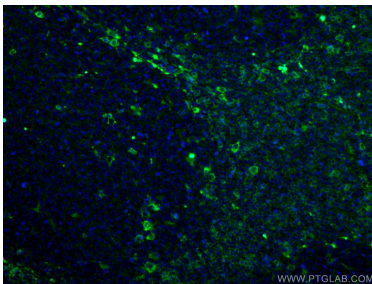
Selected Validation Data

human plasma were subjected to SDS PAGE followed by western blot with 66078-1-Ig (Alpha Antichymotrypsin antibody) at dilution of 1:10000 incubated at room temperature for 1.5 hours. This data was developed using the same antibody clone with 66078-1-PBS in a different storage buffer formulation.



Immunohistochemical analysis of paraffin-embedded human tonsillitis tissue slide using 66078-1-Ig (alpha 1 Antichymotrypsin antibody) at dilution of 1:200 (under 10x lens. Heat mediated antigen retrieval with Tris-EDTA buffer (pH 9.0). This data was developed using the same antibody clone with 66078-1-PBS in a different storage buffer formulation.

Immunohistochemical analysis of paraffin-embedded human tonsillitis tissue slide using 66078-1-Ig (alpha 1 Antichymotrypsin antibody) at dilution of 1:200 (under 40x lens. Heat mediated antigen retrieval with Tris-EDTA buffer (pH 9.0). This data was developed using the same antibody clone with 66078-1-PBS in a different storage buffer formulation.



Immunofluorescent analysis of (4% PFA) fixed human tonsillitis tissue using 66078-1-Ig (alpha 1 Antichymotrypsin antibody) at dilution of 1:100 and CoraLite488-Conjugated AffiniPure Goat Anti-Mouse IgG(H+L). This data was developed using the same antibody clone with 66078-1-PBS in a different storage buffer formulation.