

For Research Use Only

# CISD2-Specific Monoclonal antibody, PBS Only

Catalog Number: 66082-1-PBS

Featured Product

1 Publications



## Basic Information

Catalog Number:

66082-1-PBS

Size:

100ug, Concentration: 1 mg/ml by  
Nanodrop;

Source:

Mouse

Isotype:

IgG2b

GenBank Accession Number:

NM\_001008388

GeneID (NCBI):

493856

UNIPROT ID:

Q8N5K1

Full Name:

CDGSH iron sulfur domain 2

Observed MW:

15 kDa

Purification Method:

Protein A purification

CloneNo.:

3D7A3

## Applications

Tested Applications:

WB, IHC, IF/ICC, Indirect ELISA

Species Specificity:

human, zebrafish, rat, mouse

## Background Information

CISD2 gene encodes a 15 kDa CDGSH iron-sulfur domain-containing protein 2, which is also named Miner1 or NAF-1, this protein was reported on endoplasmic reticulum membrane or mitochondrion outer membrane. Defects in CISD2 are the cause of Wolfram syndrome type 2 (WFS2), a rare disorder characterized by juvenile-onset insulin-dependent diabetes mellitus with optic atrophy. CISD2 regulates autophagy program by interacting BCL2, contributing to antagonize BECN1-mediated cellular autophagy at the endoplasmic reticulum. This monoclonal antibody is specific to CISD2 and does not cross-react with CISD1.

## Notable Publications

Author	Pubmed ID	Journal	Application
Chaofeng Zhang	39605902	Front Pharmacol	

## Storage

Storage:

Store at -80°C.

Storage Buffer:

PBS only, pH7.3

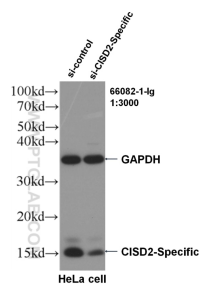
For technical support and original validation data for this product please contact:

T: 1 (888) 4PTGLAB (1-888-478-4522) (toll free  
in USA), or 1(312) 455-8498 (outside USA)

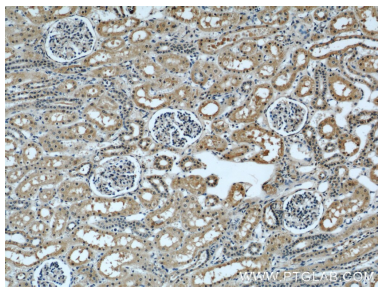
E: [proteintech@ptglab.com](mailto:proteintech@ptglab.com)  
W: [ptglab.com](http://ptglab.com)

This product is exclusively available under Proteintech Group brand and is not available to purchase from any other manufacturer.

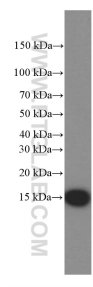
## Selected Validation Data



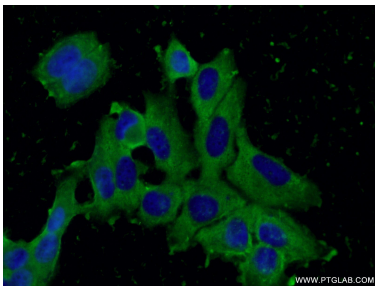
WB result of Cisd2 antibody (66082-1-Ig, 1:3000) with si-Control and si-Cisd2 transfected HeLa cells. This data was developed using the same antibody clone with 66082-1-PBS in a different storage buffer formulation.



Immunohistochemical analysis of paraffin-embedded human kidney using 66082-1-Ig(Cisd2-Specific antibody) at dilution of 1:50 (under 10x lens). This data was developed using the same antibody clone with 66082-1-PBS in a different storage buffer formulation.



fetal human brain tissue were subjected to SDS PAGE followed by western blot with 66082-1-Ig (Cisd2-Specific Antibody) at dilution of 1:8000 incubated at room temperature for 1.5 hours. This data was developed using the same antibody clone with 66082-1-PBS in a different storage buffer formulation.



Immunofluorescent analysis of (-20°C Ethanol ) fixed MCF-7 cells using 66082-1-Ig(Cisd2-Specific antibody) at dilution of 1:100 and Alexa Fluor 488-conjugated Goat Anti-Mouse IgG(H+L). This data was developed using the same antibody clone with 66082-1-PBS in a different storage buffer formulation.