

# TLE3 Monoclonal antibody, PBS Only

Catalog Number: 66083-1-PBS

## Basic Information

<b>Catalog Number:</b> 66083-1-PBS	<b>GenBank Accession Number:</b> BC015729	<b>Purification Method:</b> Protein A purification
<b>Size:</b> 100ug, Concentration: 1 mg/ml by Nanodrop;	<b>GeneID (NCBI):</b> 7090	<b>CloneNo.:</b> 1D11A8
<b>Source:</b> Mouse	<b>UNIPROT ID:</b> Q04726	
<b>Isotype:</b> IgG1	<b>Full Name:</b> transducin-like enhancer of split 3 (E(sp1) homolog, Drosophila)	
<b>Immunogen Catalog Number:</b> AG17906	<b>Calculated MW:</b> 772 aa, 83 kDa	
	<b>Observed MW:</b> 90 kDa	

## Applications

**Tested Applications:**  
WB, IP, IHC, Indirect ELISA

**Species Specificity:**  
human

## Background Information

TLE3, also named as KIAA1547 and ESG3, belongs to the WD repeat Groucho/TLE family. It is a transcriptional corepressor that binds to a number of transcription factors. It inhibits the transcriptional activation mediated by CTNNB1 and TCF family members in Wnt signaling. The effects of full-length TLE family members may be modulated by association with dominant-negative AES. TLE3 is a member of the transducin-like enhancer of split (TLE) family of proteins that have been implicated in the tumorigenesis and classification of sarcomas. It is a candidate biomarker of response to taxane therapy.(PMID:19309506)

## Storage

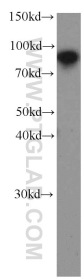
**Storage:**  
Store at -80°C.

**Storage Buffer:**  
PBS Only

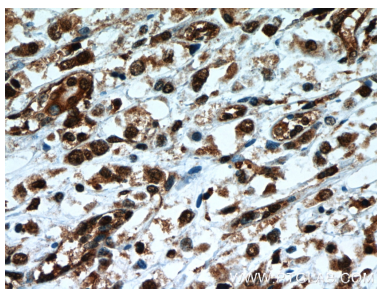
For technical support and original validation data for this product please contact:  
T: 1 (888) 4PTGLAB (1-888-478-4522) (toll free in USA), or 1(312) 455-8498 (outside USA)  
E: [proteintech@ptglab.com](mailto:proteintech@ptglab.com)  
W: [ptglab.com](http://ptglab.com)

This product is exclusively available under Proteintech Group brand and is not available to purchase from any other manufacturer.

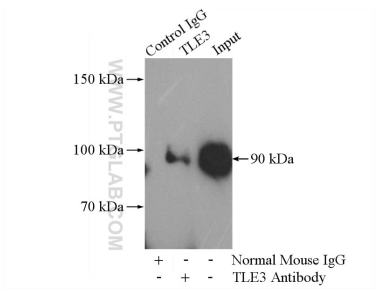
Selected Validation Data



HEK-293 cells were subjected to SDS PAGE followed by western blot with 66083-1-Ig (TLE3 antibody) at dilution of 1:1000 incubated at room temperature for 1.5 hours. This data was developed using the same antibody clone with 66083-1-PBS in a different storage buffer formulation.



Immunohistochemical analysis of paraffin-embedded human breast cancer slide using 66083-1-Ig (TLE3 Antibody) at dilution of 1:50. This data was developed using the same antibody clone with 66083-1-PBS in a different storage buffer formulation.



IP result of anti-TLE3 (IP:66083-1-Ig, 5ug; Detection:66083-1-Ig 1:500) with HEK-293 cells lysate 1480ug. This data was developed using the same antibody clone with 66083-1-PBS in a different storage buffer formulation.