

For Research Use Only

# UBE2C Monoclonal antibody

Catalog Number: 66087-1-Ig

Featured Product

7 Publications



## Basic Information

<b>Catalog Number:</b> 66087-1-Ig	<b>GenBank Accession Number:</b> BC016292	<b>Purification Method:</b> Protein A purification
<b>Size:</b> 150ul , Concentration: 1600 µg/ml by Nanodrop and 840 µg/ml by Bradford method using BSA as the standard;	<b>GeneID (NCBI):</b> 11065	<b>CloneNo.:</b> 1C12H8
<b>Source:</b> Mouse	<b>Full Name:</b> ubiquitin-conjugating enzyme E2C	<b>Recommended Dilutions:</b> WB 1:1000-1:4000 IHC 1:200-1:800 IF 1:400-1:1600
<b>Isotype:</b> IgG1	<b>Calculated MW:</b> 179 aa, 20 kDa	
<b>Immunogen Catalog Number:</b> AG19235	<b>Observed MW:</b> 20 kDa	

## Applications

### Tested Applications:

IF, IHC, WB, ELISA

### Cited Applications:

IF, IHC, WB

### Species Specificity:

human, mouse, rat

### Cited Species:

human

**Note-IHC: suggested antigen retrieval with TE buffer pH 9.0; (\*) Alternatively, antigen retrieval may be performed with citrate buffer pH 6.0**

### Positive Controls:

**WB** : HeLa cells, HEK-293 cells, HepG2 cells, U2OS cells, A549 cells, HSC-T6 cells, NIH/3T3 cells

**IHC** : human lung cancer tissue, human colon cancer tissue

**IF** : HeLa cells,

## Background Information

UBE2C (Ubiquitin-conjugating enzyme E2 C) is also known as UBCH10 and belongs to the ubiquitin-conjugating enzyme family. It is highly expressed in a variety of human primary tumors, and it is able to promote cell proliferation and malignant transformation (PMID:18703417). UBE2C, along with the E3 ligase of the anaphase promoting complex (APC), catalyzes the ubiquitination of mitotic cyclins A and B, as well as securin. UBE2C is essential for cell cycle progression, and mutation of its active site cysteine confers a dominant-negative phenotype (PMID:17217624).

## Notable Publications

Author	Pubmed ID	Journal	Application
Xianxing Wang	31715067	FEBS J	WB, IHC
Yingjie Su	36423684	J Biol Chem	WB
Andrew L Hong	30860482	Elife	WB

## Storage

### Storage:

Store at -20°C. Stable for one year after shipment.

### Storage Buffer:

PBS with 0.02% sodium azide and 50% glycerol pH 7.3.

Aliquoting is unnecessary for -20°C storage

\*\*\* 20ul sizes contain 0.1% BSA

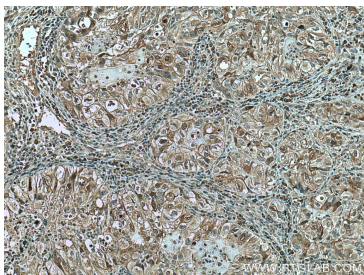
For technical support and original validation data for this product please contact:

T: 1 (888) 4PTGLAB (1-888-478-4522) (toll free in USA), or 1(312) 455-8498 (outside USA)

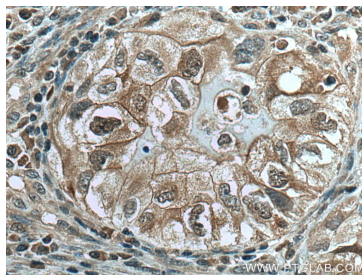
E: proteintech@ptglab.com  
W: ptglab.com

This product is exclusively available under Proteintech Group brand and is not available to purchase from any other manufacturer.

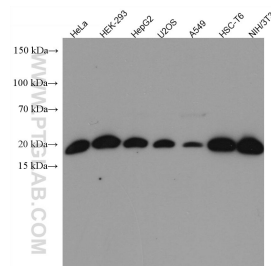
## Selected Validation Data



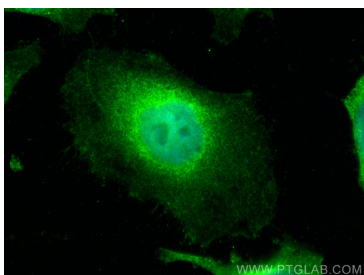
Immunohistochemical analysis of paraffin-embedded human lung cancer tissue slide using 66087-1-Ig (UBE2C antibody) at dilution of 1:400 (under 10x lens). Heat mediated antigen retrieval with Tris-EDTA buffer (pH 9.0).



Immunohistochemical analysis of paraffin-embedded human lung cancer tissue slide using 66087-1-Ig (UBE2C antibody) at dilution of 1:400 (under 40x lens). Heat mediated antigen retrieval with Tris-EDTA buffer (pH 9.0).



Various lysates were subjected to SDS PAGE followed by western blot with 66087-1-Ig (UBE2C antibody) at dilution of 1:2000 incubated at room temperature for 1.5 hours.



Immunofluorescent analysis of (4% PFA) fixed HeLa cells using UBE2C antibody (66087-1-Ig, Clone: 1C12H8 ) at dilution of 1:800 and CoraLite@488-Conjugated AffiniPure Goat Anti-Mouse IgG(H+L).