

For Research Use Only

UBE2C Monoclonal antibody

Catalog Number: 66087-1-Ig

Featured Product

11 Publications



Basic Information

Catalog Number: 66087-1-Ig	GenBank Accession Number: BC016292	Purification Method: Protein A purification
Size: 150ul , Concentration: 1600 ug/ml by Nanodrop and 840 ug/ml by Bradford method using BSA as the standard;	GeneID (NCBI): 11065	CloneNo.: 1C12H8
Source: Mouse	UNIPROT ID: O00762	Recommended Dilutions: WB 1:1000-1:4000 IHC 1:200-1:800 IF/ICC 1:400-1:1600
Isotype: IgG1	Full Name: ubiquitin-conjugating enzyme E2C	
Immunogen Catalog Number: AG19235	Calculated MW: 179 aa, 20 kDa	
	Observed MW: 20 kDa	

Applications

Tested Applications:
WB, IHC, IF/ICC, ELISA

Cited Applications:
WB, IHC, IF, CoIP

Species Specificity:
human, mouse, rat

Cited Species:
human, mouse

Note-IHC: suggested antigen retrieval with TE buffer pH 9.0; (*) Alternatively, antigen retrieval may be performed with citrate buffer pH 6.0

Positive Controls:

WB : HeLa cells, HEK-293 cells, HepG2 cells, U2OS cells, A549 cells, HSC-T6 cells, NIH/3T3 cells

IHC : human lung cancer tissue, human colon cancer tissue

IF/ICC : HeLa cells,

Background Information

UBE2C (Ubiquitin-conjugating enzyme E2 C) is also known as UBCH10 and belongs to the ubiquitin-conjugating enzyme family. It is highly expressed in a variety of human primary tumors, and it is able to promote cell proliferation and malignant transformation (PMID:18703417). UBE2C, along with the E3 ligase of the anaphase promoting complex (APC), catalyzes the ubiquitination of mitotic cyclins A and B, as well as securin. UBE2C is essential for cell cycle progression, and mutation of its active site cysteine confers a dominant-negative phenotype (PMID:17217624).

Notable Publications

Author	Pubmed ID	Journal	Application
Xianxing Wang	31715067	FEBS J	WB, IHC
Yingjie Su	36423684	J Biol Chem	WB
Andrew L Hong	30860482	Elife	WB

Storage

Storage:

Store at -20°C. Stable for one year after shipment.

Storage Buffer:

PBS with 0.02% sodium azide and 50% glycerol pH 7.3.

Aliquoting is unnecessary for -20°C storage

*** 20ul sizes contain 0.1% BSA

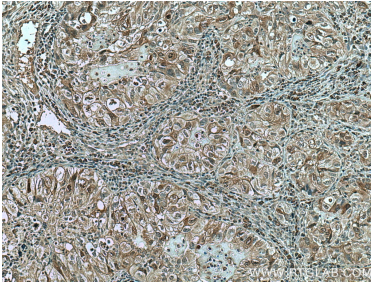
For technical support and original validation data for this product please contact:

T: 1 (888) 4PTGLAB (1-888-478-4522) (toll free in USA), or 1(312) 455-8498 (outside USA)

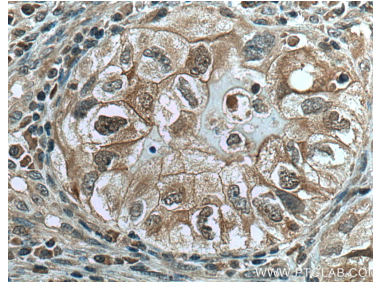
E: proteintech@ptglab.com
W: ptglab.com

This product is exclusively available under Proteintech Group brand and is not available to purchase from any other manufacturer.

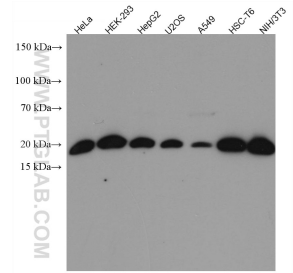
Selected Validation Data



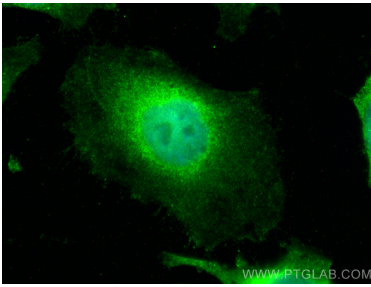
Immunohistochemical analysis of paraffin-embedded human lung cancer tissue slide using 66087-1-Ig (UBE2C antibody) at dilution of 1:400 (under 10x lens). Heat mediated antigen retrieval with Tris-EDTA buffer (pH 9.0).



Immunohistochemical analysis of paraffin-embedded human lung cancer tissue slide using 66087-1-Ig (UBE2C antibody) at dilution of 1:400 (under 40x lens). Heat mediated antigen retrieval with Tris-EDTA buffer (pH 9.0).



Various lysates were subjected to SDS PAGE followed by western blot with 66087-1-Ig (UBE2C antibody) at dilution of 1:2000 incubated at room temperature for 1.5 hours.



Immunofluorescent analysis of (4% PFA) fixed HeLa cells using UBE2C antibody (66087-1-Ig, Clone: 1C12H8) at dilution of 1:800 and CoraLite®488-Conjugated Goat Anti-Mouse IgG(H+L).