

For Research Use Only

S100A6 Monoclonal antibody

Catalog Number: 66098-1-Ig **1 Publications**



Basic Information

Catalog Number: 66098-1-Ig	GenBank Accession Number: BC001431	Purification Method: Protein A purification
Size: 150ul , Concentration: 800 µg/ml by Nanodrop and 600 µg/ml by Bradford method using BSA as the standard;	GeneID (NCBI): 6277	CloneNo.: 3D11C8
Source: Mouse	Full Name: S100 calcium binding protein A6	Recommended Dilutions: WB 1:500-1:2000 IHC 1:50-1:500 IF 1:10-1:100
Isotype: IgG1	Calculated MW: 10 kDa	
Immunogen Catalog Number: AG17606	Observed MW: 10 kDa	

Applications

Tested Applications: IF, IHC, WB, ELISA	Positive Controls: WB : HeLa cells, A549 cells
Cited Applications: WB	IHC : human colon cancer tissue, human liver cancer tissue, human pancreas cancer tissue
Species Specificity: human	IF : HepG2 cells,
Cited Species: human	
Note-IHC: suggested antigen retrieval with TE buffer pH 9.0; (*) Alternatively, antigen retrieval may be performed with citrate buffer pH 6.0	

Background Information

S100A6 is also named as calyculin, prolactin receptor-associated protein (PRA), growth factor-inducible protein 2A9 or MLN4. It belongs to S100 family of low molecular weight, acidic, calcium-binding proteins which contain two EF-hand calcium binding sites. S100A6 may function as a calcium sensor to activate several processes in the calcium signal transduction pathway of cell growth, proliferation, secretion and exocytosis.

Notable Publications

Author	Pubmed ID	Journal	Application
Dongqiang Song	33335992	Open Med (Wars)	WB

Storage

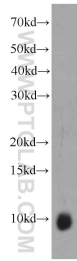
Storage:
Store at -20°C. Stable for one year after shipment.
Storage Buffer:
PBS with 0.02% sodium azide and 50% glycerol pH 7.3.
Aliquoting is unnecessary for -20°C storage

*** 20ul sizes contain 0.1% BSA

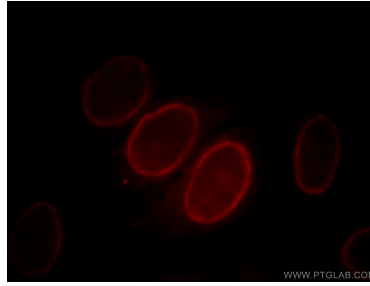
For technical support and original validation data for this product please contact:
T: 1 (888) 4PTGLAB (1-888-478-4522) (toll free in USA), or 1(312) 455-8498 (outside USA)
E: proteintech@ptglab.com
W: ptglab.com

This product is exclusively available under Proteintech Group brand and is not available to purchase from any other manufacturer.

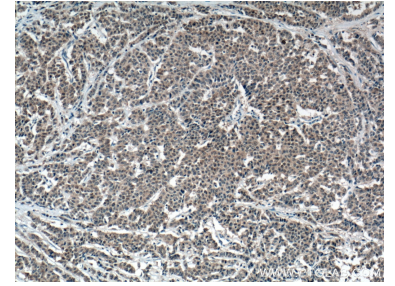
Selected Validation Data



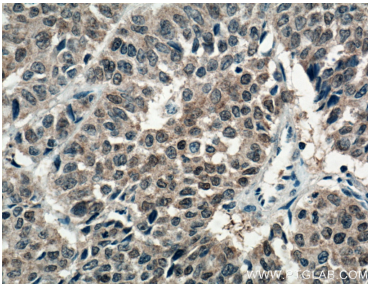
HeLa cells were subjected to SDS PAGE followed by western blot with 66098-1-Ig (S100A6 antibody) at dilution of 1:1000 incubated at room temperature for 1.5 hours.



Immunofluorescent analysis of HepG2 cells, using S100A6 antibody 66098-1-Ig at 1:25 dilution and Rhodamine-labeled goat anti-mouse IgG (red).



Immunohistochemical analysis of paraffin-embedded human colon cancer tissue slide using 66098-1-Ig (S100A6 antibody) at dilution of 1:200 (under 10x lens. Heat mediated antigen retrieval with Tris-EDTA buffer (pH 9.0).



Immunohistochemical analysis of paraffin-embedded human colon cancer tissue slide using 66098-1-Ig (S100A6 antibody) at dilution of 1:200 (under 40x lens. Heat mediated antigen retrieval with Tris-EDTA buffer (pH 9.0).