

For Research Use Only

Clusterin Monoclonal antibody

Catalog Number: 66109-1-Ig



Basic Information

Catalog Number: 66109-1-Ig	GenBank Accession Number: BC010514	Purification Method: Protein G purification
Size: 150ul, Concentration: 2200 µg/ml by Nanodrop and 1000 µg/ml by Bradford method using BSA as the standard;	GeneID (NCBI): 1191	CloneNo.: 2F12G10
Source: Mouse	Full Name: clusterin	Recommended Dilutions: WB 1:5000-1:50000 IHC 1:20-1:200
Isotype: IgG1	Calculated MW: 449 aa, 53 kDa	
Immunogen Catalog Number: AG19236	Observed MW: 36 kDa	

Applications

Tested Applications:
IHC, WB, ELISA

Species Specificity:
human

**Note-IHC: suggested antigen retrieval with
TE buffer pH 9.0; (*) Alternatively, antigen
retrieval may be performed with citrate
buffer pH 6.0**

Positive Controls:

WB : human plasma,

IHC : human liver tissue, human breast cancer tissue,
human prostate cancer tissue

Background Information

Clusterin (Apolipoprotein J) is a 75-80 kDa heterodimeric glycoprotein produced by a wide array of tissues and found in most biologic fluids (PMID: 7648419; 11906815). It is encoded by one single gene and cleaved posttranslationally into α (34-36 kDa) and β (36-39 kDa) subunits prior to secretion from the cell. Many functions have been described for clusterin, including regulating apoptosis, transporting lipids, controlling cell interactions, regulating complement (PMID: 10694874).

Storage

Storage:

Store at -20°C. Stable for one year after shipment.

Storage Buffer:

PBS with 0.02% sodium azide and 50% glycerol pH 7.3.

Aliquoting is unnecessary for -20°C storage

*** 20ul sizes contain 0.1% BSA

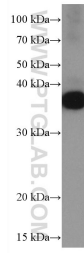
For technical support and original validation data for this product please contact:

T: 1 (888) 4PTGLAB (1-888-478-4522) (toll free
in USA), or 1(312) 455-8498 (outside USA)

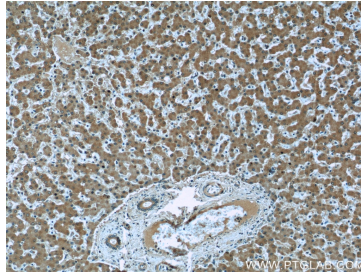
E: proteintech@ptglab.com
W: ptglab.com

This product is exclusively available under Proteintech Group brand and is not available to purchase from any other manufacturer.

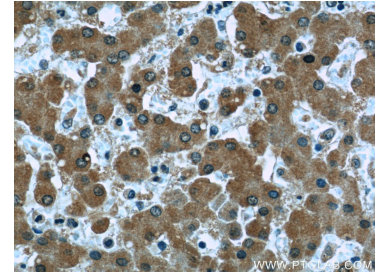
Selected Validation Data



human plasma were subjected to SDS PAGE followed by western blot with 66109-1-Ig (Clusterin antibody) at dilution of 1:20000 incubated at room temperature for 1.5 hours.



Immunohistochemical analysis of paraffin-embedded human liver slide using 66109-1-Ig (Clusterin antibody at dilution of 1:50 (under 10x lens).



Immunohistochemical analysis of paraffin-embedded human liver slide using 66109-1-Ig (Clusterin antibody at dilution of 1:50 (under 40x lens).