

For Research Use Only

# Clusterin Monoclonal antibody

Catalog Number: 66109-1-Ig



## Basic Information

<b>Catalog Number:</b> 66109-1-Ig	<b>GenBank Accession Number:</b> BC010514	<b>Purification Method:</b> Protein G purification
<b>Size:</b> 150ul , Concentration: 893 µg/ml by Bradford method using BSA as the standard;	<b>GeneID (NCBI):</b> 1191	<b>CloneNo.:</b> 2F12G10
<b>Source:</b> Mouse	<b>Full Name:</b> clusterin	<b>Recommended Dilutions:</b> WB 1:5000-1:50000 IHC 1:20-1:200
<b>Isotype:</b> IgG1	<b>Calculated MW:</b> 449 aa, 53 kDa	
<b>Immunogen Catalog Number:</b> AG19236	<b>Observed MW:</b> 36 kDa	

## Applications

### Tested Applications:

IHC, WB, ELISA

### Species Specificity:

human

**Note-IHC: suggested antigen retrieval with TE buffer pH 9.0; (\*) Alternatively, antigen retrieval may be performed with citrate buffer pH 6.0**

### Positive Controls:

WB : human plasma,

IHC : human liver tissue, human breast cancer tissue, human prostate cancer tissue

## Background Information

Clusterin (Apolipoprotein J) is a 75-80 kDa heterodimeric glycoprotein produced by a wide array of tissues and found in most biologic fluids (PMID: 7648419; 11906815). It is encoded by one single gene and cleaved posttranslationally into  $\alpha$  (34-36 kDa) and  $\beta$  (36-39 kDa) subunits prior to secretion from the cell. Many functions have been described for clusterin, including regulating apoptosis, transporting lipids, controlling cell interactions, regulating complement (PMID: 10694874).

## Storage

### Storage:

Store at -20°C. Stable for one year after shipment.

### Storage Buffer:

PBS with 0.02% sodium azide and 50% glycerol pH 7.3.

Aliquoting is unnecessary for -20°C storage

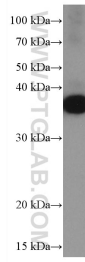
For technical support and original validation data for this product please contact:

T: 1 (888) 4PTGLAB (1-888-478-4522) (toll free in USA), or 1(312) 455-8498 (outside USA)

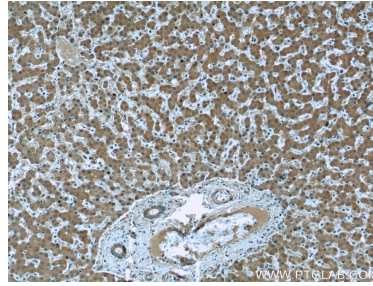
E: proteintech@ptglab.com  
W: ptglab.com

**This product is exclusively available under Proteintech Group brand and is not available to purchase from any other manufacturer.**

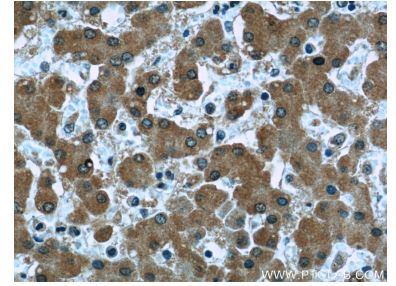
## Selected Validation Data



human plasma were subjected to SDS PAGE followed by western blot with 66109-1-Ig (Clusterin antibody) at dilution of 1:20000 incubated at room temperature for 1.5 hours.



Immunohistochemical analysis of paraffin-embedded human liver slide using 66109-1-Ig (Clusterin antibody at dilution of 1:50 (under 10x lens).



Immunohistochemical analysis of paraffin-embedded human liver slide using 66109-1-Ig (Clusterin antibody at dilution of 1:50 (under 40x lens).