

For Research Use Only

# COXIV Monoclonal antibody

Catalog Number: 66110-1-Ig 48 Publications



## Basic Information

Catalog Number:	GenBank Accession Number:	Purification Method:
66110-1-Ig	BC021236	Protein A purification
Size:	GeneID (NCBI):	CloneNo.:
150ul , Concentration: 2000 ug/ml by Nanodrop;	1327	2A7B2
Source:	UNIPROT ID:	Recommended Dilutions:
Mouse	P13073	WB 1:5000-1:50000
Isotype:	Full Name:	IHC 1:250-1:1000
IgG1	cytochrome c oxidase subunit IV isoform 1	
Immunogen Catalog Number:	Calculated MW:	
AG20551	19.6 kDa	
	Observed MW:	
	17-18 kDa	

## Applications

Tested Applications:	Positive Controls:
WB, IHC, ELISA	WB : A431 cells, HeLa cells, HEK-293 cells, HepG2 cells, Jurkat cells, LNCaP cells, K-562 cells
Cited Applications:	IHC : human prostate cancer tissue, human pancreas tissue, human heart tissue
WB, IF, IP	
Species Specificity:	
human	
Cited Species:	
human, mouse, rat	

**Note-IHC: suggested antigen retrieval with TE buffer pH 9.0; (\*) Alternatively, antigen retrieval may be performed with citrate buffer pH 6.0**

## Background Information

COX4l1, also named as COX4 and COXIV-1, belongs to the cytochrome c oxidase IV family. It is one of the nuclear-coded polypeptide chains of cytochrome c oxidase, the terminal oxidase in mitochondrial electron transport. COX4l1 is a marker for mitochondria. It has two isoforms (isoform 1 and 2). Isoform 1(COX4l1) is ubiquitously expressed and isoform 2 is highly expressed in lung tissues. COX4l1 is commonly used as a loading control. This antibody is specific to COX4l1 and do not cross reacts with COX4l2.

## Notable Publications

Author	Pubmed ID	Journal	Application
Zi-Chao Wang	36163178	Cell Death Dis	WB
Xingfeng Liu	36131205	Nat Metab	WB
Quanfu Li	36289190	Cell Death Dis	WB

## Storage

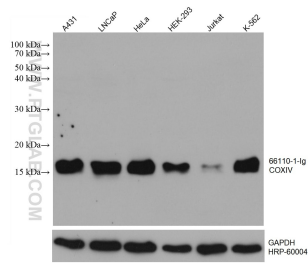
**Storage:**  
Store at -20°C. Stable for one year after shipment.  
**Storage Buffer:**  
PBS with 0.02% sodium azide and 50% glycerol, pH7.3  
Aliquoting is unnecessary for -20°C storage

\*\*\* 20ul sizes contain 0.1%BSA

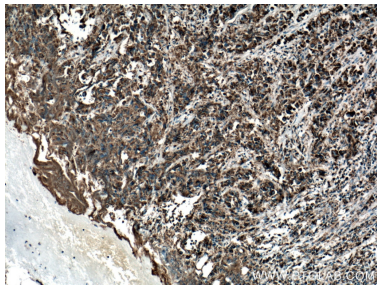
For technical support and original validation data for this product please contact:  
T: 1 (888) 4PTGLAB (1-888-478-4522) (toll free in USA), or 1(312) 455-8498 (outside USA)  
E: proteintech@ptglab.com  
W: ptglab.com

This product is exclusively available under Proteintech Group brand and is not available to purchase from any other manufacturer.

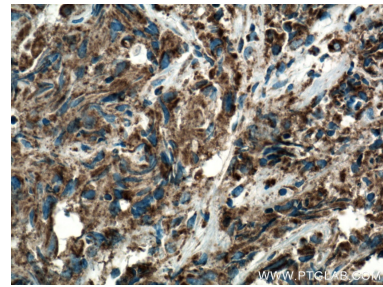
Selected Validation Data



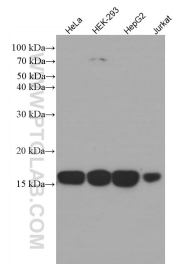
Various lysates were subjected to SDS PAGE followed by western blot with 66110-1-Ig (COXIV antibody) at dilution of 1:20000 incubated at room temperature for 1.5 hours. The membrane was stripped and reblotted with HRP-conjugated GAPDH Monoclonal antibody (HRP-60004) as loading control.



Immunohistochemical analysis of paraffin-embedded human prostate cancer tissue slide using 66110-1-Ig (COXIV antibody) at dilution of 1:500 (under 10x lens. Heat mediated antigen retrieval with Tris-EDTA buffer (pH 9.0).



Immunohistochemical analysis of paraffin-embedded human prostate cancer tissue slide using 66110-1-Ig (COXIV antibody) at dilution of 1:500 (under 40x lens. Heat mediated antigen retrieval with Tris-EDTA buffer (pH 9.0).



Various lysates were subjected to SDS PAGE followed by western blot with 66110-1-Ig (COXIV antibody) at dilution of 1:3000 incubated at room temperature for 1.5 hours.