

For Research Use Only

COXIV Monoclonal antibody

Catalog Number: 66110-1-Ig **19 Publications**



Basic Information

Catalog Number: 66110-1-Ig	GenBank Accession Number: BC021236	Purification Method: Protein A purification
Size: 150ul , Concentration: 3400 µg/ml by Nanodrop and 1527 µg/ml by Bradford method using BSA as the standard;	GeneID (NCBI): 1327	CloneNo.: 2A7B2
Source: Mouse	Full Name: cytochrome c oxidase subunit IV isoform 1	Recommended Dilutions: WB 1:2000-1:8000 IHC 1:250-1:1000 IF 1:50-1:500
Isotype: IgG1	Calculated MW: 19.6 kDa	
Immunogen Catalog Number: AG20551	Observed MW: 17-18 kDa	

Applications

Tested Applications: FC, IF, IHC, WB, ELISA	Positive Controls:
Cited Applications: IF, WB	WB : HeLa cells, A431 cells, HEK-293 cells, HepG2 cells, Jurkat cells
Species Specificity: human	IHC : human prostate cancer tissue, human pancreas tissue, human heart tissue
Cited Species: human, mouse, rat	IF : HepG2 cells,

Note-IHC: suggested antigen retrieval with TE buffer pH 9.0; (*) Alternatively, antigen retrieval may be performed with citrate buffer pH 6.0

Background Information

COX4l1, also named as COX4 and COXIV-1, belongs to the cytochrome c oxidase IV family. It is one of the nuclear-coded polypeptide chains of cytochrome c oxidase, the terminal oxidase in mitochondrial electron transport. COX4l1 is a marker for mitochondria. It has two isoforms (isoform 1 and 2). Isoform 1(COX4l1) is ubiquitously expressed and isoform 2 is highly expressed in lung tissues. COX4l1 is commonly used as a loading control. This antibody is specific to COX4l1 and do not cross reacts with COX4l2.

Notable Publications

Author	Pubmed ID	Journal	Application
Zi-Chao Wang	36163178	Cell Death Dis	WB
Xingfeng Liu	36131205	Nat Metab	WB
Xin-Hui Wang	34526554	Sci Rep	IF

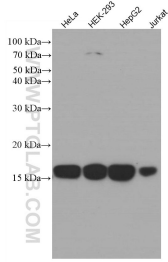
Storage

Storage:
Store at -20°C. Stable for one year after shipment.
Storage Buffer:
PBS with 0.02% sodium azide and 50% glycerol pH 7.3.
Aliquoting is unnecessary for -20°C storage

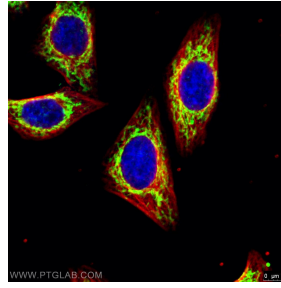
For technical support and original validation data for this product please contact:
T: 1 (888) 4PTGLAB (1-888-478-4522) (toll free in USA), or 1(312) 455-8498 (outside USA)
E: proteintech@ptglab.com
W: ptglab.com

This product is exclusively available under Proteintech Group brand and is not available to purchase from any other manufacturer.

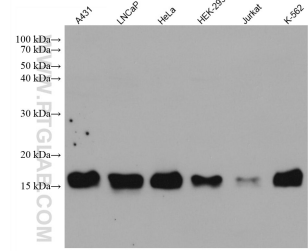
Selected Validation Data



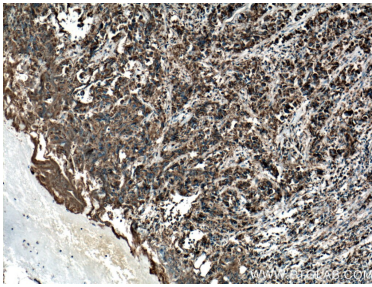
Various lysates were subjected to SDS PAGE followed by western blot with 66110-1-Ig (COXIV antibody) at dilution of 1:3000 incubated at room temperature for 1.5 hours.



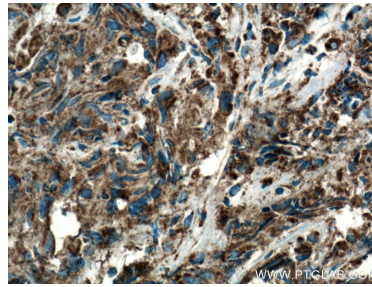
Immunofluorescent analysis of (4% PFA) fixed HepG2 cells using 66110-1-Ig (COXIV antibody, 1:100) at dilution of 1:100 and Alexa Fluor 488-Conjugated AffiniPure Goat Anti-Mouse IgG(H+L); Red is the staining with alpha Tubulin antibody (11224-1-AP, 1:100).



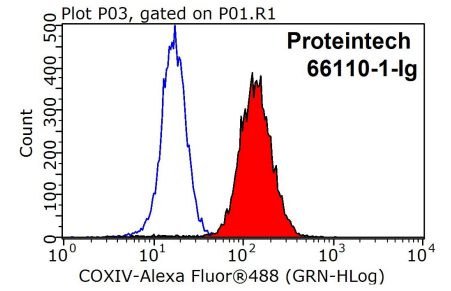
Various lysates were subjected to SDS PAGE followed by western blot with 66110-1-Ig (COXIV antibody) at dilution of 1:20000 incubated at room temperature for 1.5 hours.



Immunohistochemical analysis of paraffin-embedded human prostate cancer tissue slide using 66110-1-Ig (COXIV antibody) at dilution of 1:500 (under 10x lens. Heat mediated antigen retrieval with Tris-EDTA buffer (pH 9.0).



Immunohistochemical analysis of paraffin-embedded human prostate cancer tissue slide using 66110-1-Ig (COXIV antibody) at dilution of 1:500 (under 40x lens. Heat mediated antigen retrieval with Tris-EDTA buffer (pH 9.0).



1X10⁶ HeLa cells were stained with 0.2ug COXIV antibody (66110-1-Ig, red) and control antibody (blue). Fixed with 90% MeOH blocked with 3% BSA (30 min). Alexa Fluor 488-conjugated AffiniPure Goat Anti-Mouse IgG(H+L) with dilution 1:1000.