

For Research Use Only

SNRPD2 Monoclonal antibody

Catalog Number: 66111-1-Ig



Basic Information

Catalog Number: 66111-1-Ig	GenBank Accession Number: BC000486	Purification Method: Protein A purification
Size: 150ul , Concentration: 2400 µg/ml by Nanodrop and 1273 µg/ml by Bradford method using BSA as the standard;	GeneID (NCBI): 6633	CloneNo.: 1F12B2
Source: Mouse	Full Name: small nuclear ribonucleoprotein D2 polypeptide 16.5kDa	Recommended Dilutions: WB 1:500-1:2000
Isotype: IgG2b	Calculated MW: 14 kDa	
Immunogen Catalog Number: AG7115	Observed MW: 14-16 kDa	

Applications

Tested Applications: WB, ELISA	Positive Controls: WB : Hela cells, MCF-7 cells
Species Specificity: human	

Background Information

Systemic lupus erythematosus is characterized by antibodies to a variety of intracellular self-antigens, such as dsDNA and Sm, and these serve as hallmarks in the diagnosis of systemic autoimmune diseases. SNRPD2 is one of Sm protein, and is required for pre-mRNA splicing, snRNP biogenesis.

Storage

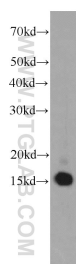
Storage:
Store at -20°C. Stable for one year after shipment.
Storage Buffer:
PBS with 0.02% sodium azide and 50% glycerol pH 7.3.
Aliquoting is unnecessary for -20°C storage

*** 20ul sizes contain 0.1% BSA

For technical support and original validation data for this product please contact:
T: 1 (888) 4PTGLAB (1-888-478-4522) (toll free in USA), or 1(312) 455-8498 (outside USA)
E: proteintech@ptglab.com
W: ptglab.com

This product is exclusively available under Proteintech Group brand and is not available to purchase from any other manufacturer.

Selected Validation Data



HeLa cells were subjected to SDS PAGE followed by western blot with 66111-1-Ig (SNRPD2 antibody) at dilution of 1:1000 incubated at room temperature for 1.5 hours.