

For Research Use Only

Iduronate 2 sulfatase Monoclonal antibody



Catalog Number: 66112-1-Ig

Basic Information

Catalog Number: 66112-1-Ig	GenBank Accession Number: BC006170	Purification Method: Protein G purification
Size: 150ul , Concentration: 900 µg/ml by Nanodrop and 520 µg/ml by Bradford method using BSA as the standard;	GeneID (NCBI): 3423	CloneNo.: 1A3F9
Source: Mouse	Full Name: iduronate 2-sulfatase	Recommended Dilutions: WB 1:500-1:1000 IHC 1:20-1:200 IF 1:20-1:200
Isotype: IgG1	Calculated MW: 312aa,35 kDa; 550aa,62 kDa	
Immunogen Catalog Number: AG19095	Observed MW: 76 kDa, 55 kDa	

Applications

Tested Applications:

IF, IHC, WB, ELISA

Species Specificity:

human, mouse, rat, pig

Note-IHC: suggested antigen retrieval with TE buffer pH 9.0; (*) Alternatively, antigen retrieval may be performed with citrate buffer pH 6.0

Positive Controls:

WB : Human placenta, rat brain tissue, human brain tissue, mouse brain tissue, pig brain tissue

IHC : human liver tissue,

IF : HepG2 cells,

Background Information

Iduronate 2-sulfatase (IDS) is required for the lysosomal degradation of heparan sulfate and dermatan sulfate. Mutations causing IDS deficiency in humans result in the lysosomal storage of these glycosaminoglycans and Hunter syndrome, an X chromosome-linked disease. IDS is synthesized as two precursor forms of 76 and 90 kDa that are converted, through a 62 kDa intermediate, to 55 and 45 kDa mature polypeptides due to an internal proteolytic cleavage (PMID: 10838181).

Storage

Storage:

Store at -20°C. Stable for one year after shipment.

Storage Buffer:

PBS with 0.02% sodium azide and 50% glycerol pH 7.3.

Aliquoting is unnecessary for -20°C storage

*** 20ul sizes contain 0.1% BSA

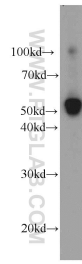
For technical support and original validation data for this product please contact:

T: 1 (888) 4PTGLAB (1-888-478-4522) (toll free in USA), or 1(312) 455-8498 (outside USA)

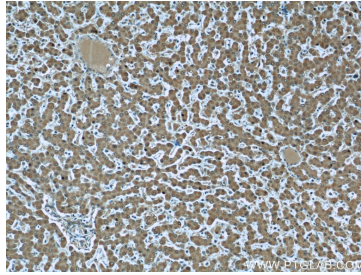
E: proteintech@ptglab.com
W: ptglab.com

This product is exclusively available under Proteintech Group brand and is not available to purchase from any other manufacturer.

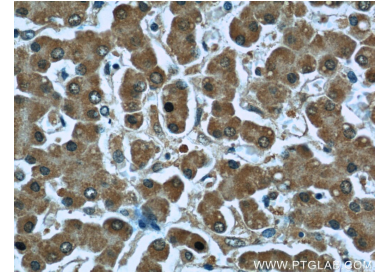
Selected Validation Data



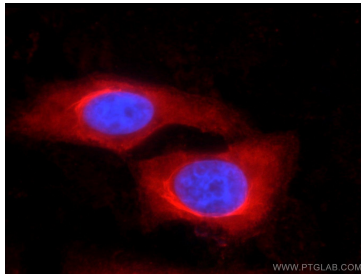
human placenta tissue were subjected to SDS PAGE followed by western blot with 66112-1-Ig (Iduronate 2 sulfatase antibody) at dilution of 1:500 incubated at room temperature for 1.5 hours.



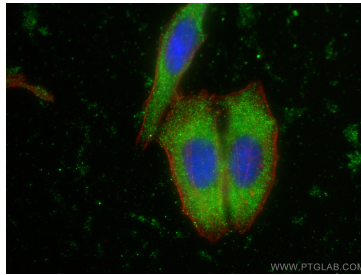
Immunohistochemical analysis of paraffin-embedded human liver slide using 66112-1-Ig (Iduronate 2 sulfatase antibody at dilution of 1:50).



Immunohistochemical analysis of paraffin-embedded human liver slide using 66112-1-Ig (Iduronate 2 sulfatase antibody at dilution of 1:50).



Immunofluorescent analysis of HepG2 cells using 66112-1-Ig (Iduronate 2 sulfatase antibody) at dilution of 1:50 and Rhodamine-Goat anti-Mouse IgG.



Immunofluorescent analysis of (-20°C Ethanol) fixed HepG2 cells using Iduronate 2 sulfatase antibody (66112-1-Ig, Clone: 1A3F9) at dilution of 1:400 and CoraLite®488-Conjugated AffiniPure Goat Anti-Mouse IgG(H+L), CL594-phalloidin (red).