

For Research Use Only

Iduronate 2 sulfatase Monoclonal antibody, PBS Only

Catalog Number: 66112-1-PBS



Basic Information

Catalog Number: 66112-1-PBS	GenBank Accession Number: BC006170	Purification Method: Protein G purification
Size: 100ug , Concentration: 1mg/ml by Nanodrop;	GeneID (NCBI): 3423	CloneNo.: 1A3F9
Source: Mouse	UNIPROT ID: P22304	
Isotype: IgG1	Full Name: iduronate 2-sulfatase	
Immunogen Catalog Number: AG19095	Calculated MW: 312aa,35 kDa; 550aa,62 kDa	
	Observed MW: 76 kDa, 55 kDa	

Applications

Tested Applications:
WB, IHC, IF/ICC, Indirect ELISA

Species Specificity:
human, mouse, rat, pig

Background Information

Iduronate 2-sulfatase (IDS) is required for the lysosomal degradation of heparan sulfate and dermatan sulfate. Mutations causing IDS deficiency in humans result in the lysosomal storage of these glycosaminoglycans and Hunter syndrome, an X chromosome-linked disease. IDS is synthesized as two precursor forms of 76 and 90 kDa that are converted, through a 62 kDa intermediate, to 55 and 45 kDa mature polypeptides due to an internal proteolytic cleavage (PMID: 10838181).

Storage

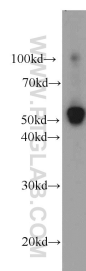
Storage:
Store at -80°C.

Storage Buffer:
PBS Only

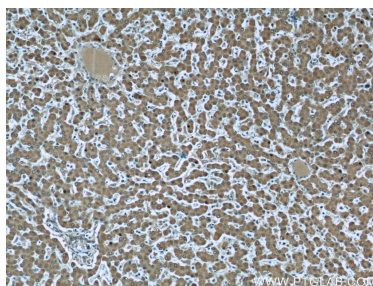
For technical support and original validation data for this product please contact:
T: 1 (888) 4PTGLAB (1-888-478-4522) (toll free in USA), or 1(312) 455-8498 (outside USA)
E: proteintech@ptglab.com
W: ptglab.com

This product is exclusively available under Proteintech Group brand and is not available to purchase from any other manufacturer.

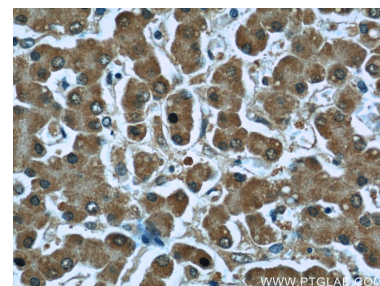
Selected Validation Data



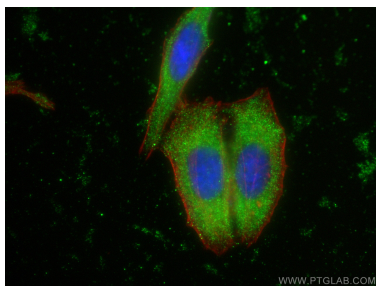
human placenta tissue were subjected to SDS PAGE followed by western blot with 66112-1-Ig (Iduronate 2 sulfatase antibody) at dilution of 1:500 incubated at room temperature for 1.5 hours. This data was developed using the same antibody clone with 66112-1-PBS in a different storage buffer formulation.



Immunohistochemical analysis of paraffin-embedded human liver slide using 66112-1-Ig (Iduronate 2 sulfatase antibody at dilution of 1:50. This data was developed using the same antibody clone with 66112-1-PBS in a different storage buffer formulation.



Immunohistochemical analysis of paraffin-embedded human liver slide using 66112-1-Ig (Iduronate 2 sulfatase antibody at dilution of 1:50. This data was developed using the same antibody clone with 66112-1-PBS in a different storage buffer formulation.



Immunofluorescent analysis of (-20°C Ethanol) fixed HepG2 cells using Iduronate 2 sulfatase antibody (66112-1-Ig, Clone: 1A3F9) at dilution of 1:400 and CoraLite®488-Conjugated AffiniPure Goat Anti-Mouse IgG(H+L), CL594-phalloidin (red). This data was developed using the same antibody clone with 66112-1-PBS in a different storage buffer formulation.