

For Research Use Only

AFM Monoclonal antibody

Catalog Number: 66113-1-Ig



Basic Information

Catalog Number: 66113-1-Ig	GenBank Accession Number: BC109020	Purification Method: Protein G purification
Size: 150ul , Concentration: 900 µg/ml by Nanodrop and 553 µg/ml by Bradford method using BSA as the standard;	GeneID (NCBI): 173	CloneNo.: 2G9F6
Source: Mouse	Full Name: afamin	Recommended Dilutions: WB 1:2000-1:10000 IP 0.5-4.0 ug for IP and 1:500-1:1000 for WB
Isotype: IgG1	Calculated MW: 599 aa, 69 kDa	IHC 1:20-1:200
Immunogen Catalog Number: AG16866	Observed MW: 85 kDa	IF 1:200-1:800

Applications

Tested Applications:

IF, IHC, IP, WB, ELISA

Species Specificity:

human, mouse

Note-IHC: suggested antigen retrieval with TE buffer pH 9.0; (*) Alternatively, antigen retrieval may be performed with citrate buffer pH 6.0

Positive Controls:

WB : human plasma,

IP : human plasma tissue,

IHC : human liver tissue,

IF : HeLa cells,

Background Information

AFM (African feline monocyte) is a member of the albumin superfamily, which comprises albumin, vitamin D-binding protein, α-fetoprotein, and afamin. AFM is present in the plasma/serum, cerebrospinal fluid, and follicular fluid, and functions as a vitamin E-binding protein. Alterations of expression level of AFM have been linked to variety of diseases like cancer.

Storage

Storage:

Store at -20°C. Stable for one year after shipment.

Storage Buffer:

PBS with 0.02% sodium azide and 50% glycerol pH 7.3.

Aliquoting is unnecessary for -20°C storage

*** 20ul sizes contain 0.1% BSA

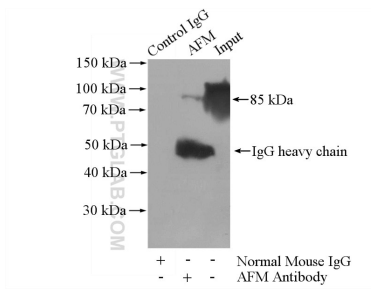
For technical support and original validation data for this product please contact:

T: 1 (888) 4PTGLAB (1-888-478-4522) (toll free in USA), or 1(312) 455-8498 (outside USA)

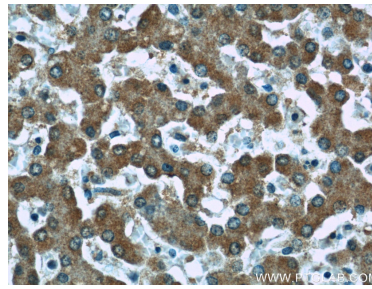
E: proteintech@ptglab.com
W: ptglab.com

This product is exclusively available under Proteintech Group brand and is not available to purchase from any other manufacturer.

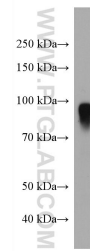
Selected Validation Data



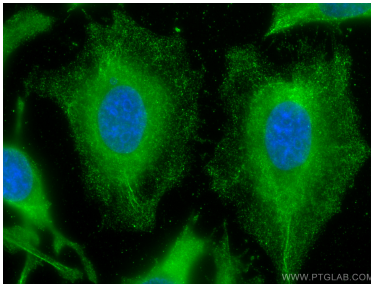
IP Result of anti-AFM (IP:66113-1-Ig, 5ug; Detection:66113-1-Ig 1:500) with human plasma lysate 4000ug.



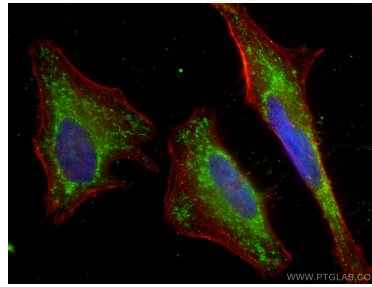
Immunohistochemical analysis of paraffin-embedded human liver tissue slide using 66113-1-Ig (AFM Antibody) at dilution of 1:50.



human plasma were subjected to SDS PAGE followed by western blot with 66113-1-Ig (AFM antibody) at dilution of 1:5000 incubated at room temperature for 1.5 hours.



Immunofluorescent analysis of (-20°C Methanol) fixed HeLa cells using AFM antibody (66113-1-Ig, Clone: 2G9F6) at dilution of 1:800 and CoraLite®488-Conjugated AffiniPure Goat Anti-Mouse IgG(H+L).



Immunofluorescent analysis of (-20°C Ethanol) fixed HeLa cells using AFM antibody (66113-1-Ig, Clone: 2G9F6) at dilution of 1:400 and CoraLite®488-Conjugated AffiniPure Goat Anti-Mouse IgG(H+L), CL594-Phalloidin (red).