

For Research Use Only

AFM Monoclonal antibody, PBS Only

Catalog Number: 66113-1-PBS



Basic Information

Catalog Number: 66113-1-PBS	GenBank Accession Number: BC109020	Purification Method: Protein G purification
Size: 100ug , Concentration: 1mg/ml by Nanodrop;	GeneID (NCBI): 173	CloneNo.: 2G9F6
Source: Mouse	UNIPROT ID: P43652	
Isotype: IgG1	Full Name: afamin	
Immunogen Catalog Number: AG16866	Calculated MW: 599 aa, 69 kDa	
	Observed MW: 85 kDa	

Applications

Tested Applications:
WB, IHC, IF/ICC, IP, Indirect ELISA

Species Specificity:
human, mouse

Background Information

AFM (Afinin) is a member of the albumin superfamily, which comprises albumin, vitamin D-binding protein, a-fetoprotein, and afamin. AFM is present in the plasma/serum, cerebrospinal fluid, and follicular fluid, and functions as a vitamin E-binding protein. Alterations of expression level of AFM have been linked to variety of diseases like cancer.

Storage

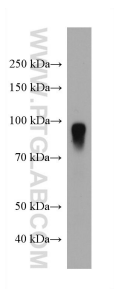
Storage:
Store at -80°C.

Storage Buffer:
PBS Only

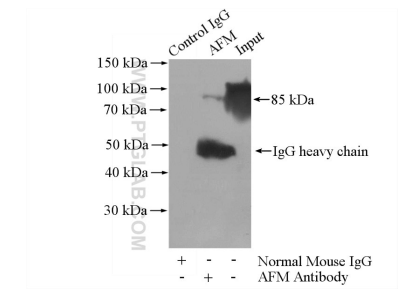
For technical support and original validation data for this product please contact:
T: 1 (888) 4PTGLAB (1-888-478-4522) (toll free in USA), or 1(312) 455-8498 (outside USA)
E: proteintech@ptglab.com
W: ptglab.com

This product is exclusively available under Proteintech Group brand and is not available to purchase from any other manufacturer.

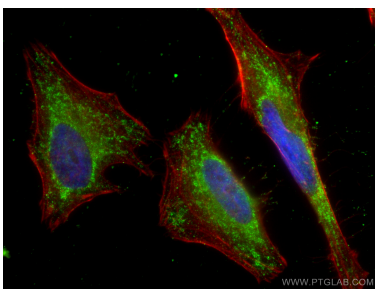
Selected Validation Data



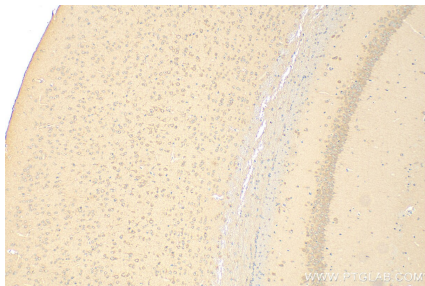
human plasma were subjected to SDS PAGE followed by western blot with 66113-1-Ig (AFM antibody) at dilution of 1:5000 incubated at room temperature for 1.5 hours. This data was developed using the same antibody clone with 66113-1-PBS in a different storage buffer formulation.



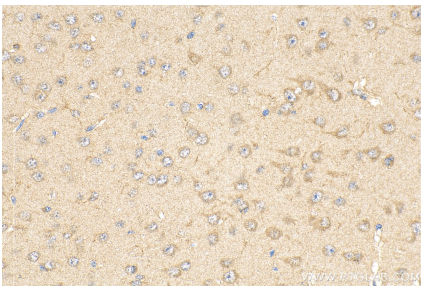
IP result of anti-AFM (IP:66113-1-Ig, 5ug; Detection:66113-1-Ig 1:500) with human plasma lysate 4000ug. This data was developed using the same antibody clone with 66113-1-PBS in a different storage buffer formulation.



Immunofluorescent analysis of (-20°C Ethanol) fixed HeLa cells using AFM antibody (66113-1-Ig, Clone: 2G9F6) at dilution of 1:400 and Coralite®488-Conjugated AffiniPure Goat Anti-Mouse IgG(H+L), CL594-Phalloidin (red). This data was developed using the same antibody clone with 66113-1-PBS in a different storage buffer formulation.



Immunohistochemical analysis of paraffin-embedded mouse brain tissue slide using 66113-1-Ig (AFM antibody) at dilution of 1:200 (under 10x lens). Heat mediated antigen retrieval with Tris-EDTA buffer (pH 9.0). This data was developed using the same antibody clone with 66113-1-PBS in a different storage buffer formulation.



Immunohistochemical analysis of paraffin-embedded mouse brain tissue slide using 66113-1-Ig (AFM antibody) at dilution of 1:200 (under 40x lens). Heat mediated antigen retrieval with Tris-EDTA buffer (pH 9.0). This data was developed using the same antibody clone with 66113-1-PBS in a different storage buffer formulation.