

For Research Use Only

Aldolase C Monoclonal antibody

Catalog Number: 66120-1-Ig



Basic Information

Catalog Number: 66120-1-Ig	GenBank Accession Number: BC003613	Purification Method: Protein G purification
Size: 150ul , Concentration: 2500 ug/ml by 230 Nanodrop and 1040 ug/ml by Bradford method using BSA as the standard;	GeneID (NCBI): P09972	CloneNo.: 5H7A5
Source: Mouse	UNIPROT ID: P09972	Recommended Dilutions: WB 1:5000-1:50000 IHC 1:50-1:500 IF/ICC 1:400-1:1600
Isotype: IgG1	Full Name: aldolase C, fructose-bisphosphate	
Immunogen Catalog Number: AG6779	Calculated MW: 39 kDa	
	Observed MW: 39 kDa	

Applications

Tested Applications: WB, IHC, IF/ICC, ELISA	Positive Controls:
Species Specificity: human, mouse, rat, pig	WB : HeLa cells, human brain tissue, human heart tissue, HepG2 cells, K-562 cells, HSC-T6 cells, Pig brain tissue, Mouse brain tissue, rat cerebellum tissue, mouse cerebellum tissue
Note-IHC: suggested antigen retrieval with TE buffer pH 9.0; (*) Alternatively, antigen retrieval may be performed with citrate buffer pH 6.0	IHC : human liver cancer tissue, mouse brain tissue, mouse liver tissue
	IF/ICC : HepG2 cells,

Background Information

Fructose-bisphosphate aldolase C (ALDOC) reversibly cleaves FBP and F1-P to glyceraldehyde 3-phosphate and dihydroxyacetone phosphate and is strongly expressed in mammalian brain together with ALDOA and is also present in the heart and spleen of some species (PMID:9363598). It is involved in glycolysis as an important enzyme. Phospholipase D2 and inositol 1,4,5-triphosphate interact with ALDOC in signal transduction. Meanwhile, the protein expression of ALDOC has been reported to be regulated in brain tumor, hepatomas, and lung cancer (PMID:21548097).

Storage

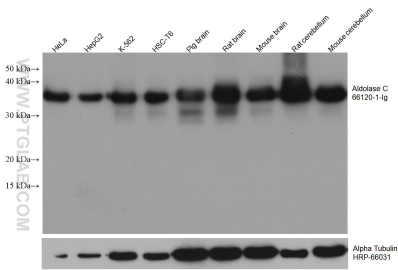
Storage:
Store at -20°C. Stable for one year after shipment.
Storage Buffer:
PBS with 0.02% sodium azide and 50% glycerol, pH7.3
Aliquoting is unnecessary for -20°C storage

*** 20ul sizes contain 0.1% BSA

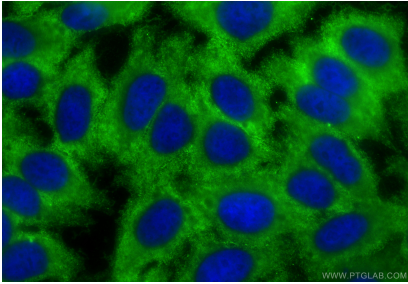
For technical support and original validation data for this product please contact:
T: 1 (888) 4PTGLAB (1-888-478-4522) (toll free in USA), or 1(312) 455-8498 (outside USA)
E: proteintech@ptglab.com
W: ptglab.com

This product is exclusively available under Proteintech Group brand and is not available to purchase from any other manufacturer.

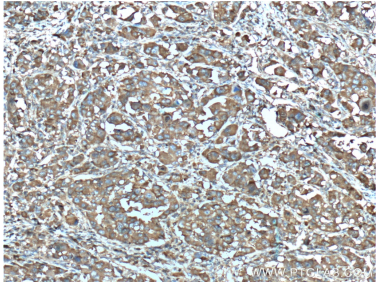
Selected Validation Data



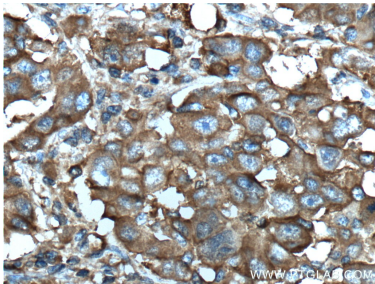
Various lysates were subjected to SDS PAGE followed by western blot with 66120-1-Ig (Aldolase C antibody) at dilution of 1:20000 incubated at room temperature for 1.5 hours. The membrane was stripped and reblotted with HRP-conjugated Alpha Tubulin Monoclonal antibody (HRP-66031) as loading control.



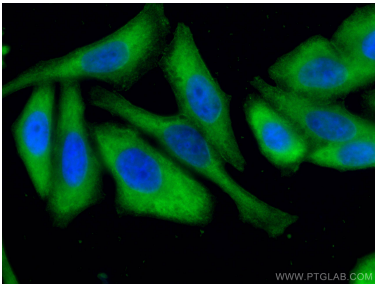
Immunofluorescent analysis of (-20°C Ethanol) fixed HepG2 cells using Aldolase C antibody (66120-1-Ig, Clone: 5H7A5) at dilution of 1:800 and CoraLite®488-Conjugated Goat Anti-Mouse IgG(H+L) (SA00013-1).



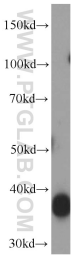
Immunohistochemical analysis of paraffin-embedded human liver cancer tissue slide using 66120-1-Ig (Aldolase C antibody at dilution of 1:200 (under 10x lens). Heat mediated antigen retrieval with Tris-EDTA buffer (pH 9.0).



Immunohistochemical analysis of paraffin-embedded human liver cancer tissue slide using 66120-1-Ig (Aldolase C antibody at dilution of 1:200 (under 40x lens). Heat mediated antigen retrieval with Tris-EDTA buffer (pH 9.0).



Immunofluorescent analysis of (-20°C Ethanol) fixed HepG2 cells using Aldolase C antibody (66120-1-Ig, Clone: 5H7A5) at dilution of 1:400 and CoraLite®488-Conjugated AffiniPure Goat Anti-Mouse IgG(H+L).



human heart tissue were subjected to SDS PAGE followed by western blot with 66120-1-Ig (Aldolase C antibody) at dilution of 1:10000 incubated at room temperature for 1.5 hours.