

For Research Use Only

Alpha Galactosidase A Monoclonal antibody, PBS Only

Catalog Number: 66121-1-PBS

Featured Product



Basic Information

Catalog Number:

66121-1-PBS

Size:

100ug, Concentration: 1mg/ml by Nanodrop;

Source:

Mouse

Isotype:

IgG2a

Immunogen Catalog Number:

AG7505

GenBank Accession Number:

BC002689

GeneID (NCBI):

2717

UNIPROT ID:

P06280

Full Name:

galactosidase, alpha

Calculated MW:

49 kDa

Observed MW:

49 kDa

Purification Method:

Protein A purification

CloneNo.:

2B2C5

Applications

Tested Applications:

WB, IHC, IF/ICC, Indirect ELISA

Species Specificity:

human

Background Information

GLA, also named as Melibiase and Alpha-galactosidase A, belongs to the glycosyl hydrolase 27 family. It hydrolyzes terminal, non-reducing alpha-D-galactose residues in alpha-D-galactosides, including galactose oligosaccharides, galactomannans and galactolipids. Fabry disease is an X-linked lysosomal storage disorder resulting from the deficient activity of GLA. Enzyme replacement therapy (ERT) with GLA is currently the most effective therapeutic strategy for patients with Fabry disease, a lysosomal storage disease.

Storage

Storage:

Store at -80°C.

Storage Buffer:

PBS Only

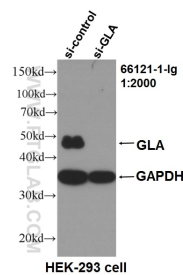
For technical support and original validation data for this product please contact:

T: 1 (888) 4PTGLAB (1-888-478-4522) (toll free in USA), or 1(312) 455-8498 (outside USA)

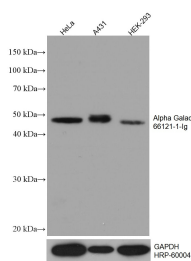
E: proteintech@ptglab.com
W: ptglab.com

This product is exclusively available under Proteintech Group brand and is not available to purchase from any other manufacturer.

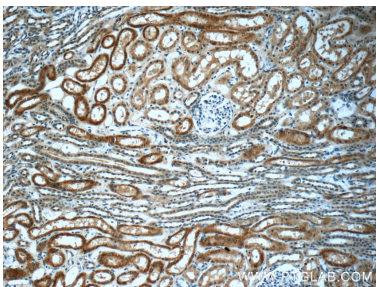
Selected Validation Data



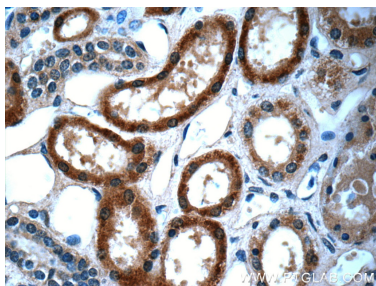
WB result of GLA antibody (66121-1-Ig, 1:2000) with si-Control and si-GLA transfected HEK293 cells.. This data was developed using the same antibody clone with 66121-1-PBS in a different storage buffer formulation.



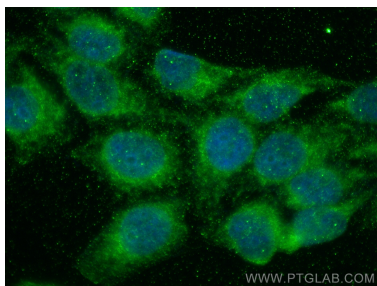
Various lysates were subjected to SDS PAGE followed by western blot with 66121-1-Ig (Alpha galactosidase A antibody) at dilution of 1:20000 incubated at room temperature for 1.5 hours. The membrane was stripped and reblotted with HRP-conjugated GAPDH Monoclonal antibody (HRP-60004) as loading control. This data was developed using the same antibody clone with 66121-1-PBS in a different storage buffer formulation.



Immunohistochemical analysis of paraffin-embedded human kidney tissue slide using 66121-1-Ig (Alpha galactosidase A antibody at dilution of 1:50 (under 10x lens). This data was developed using the same antibody clone with 66121-1-PBS in a different storage buffer formulation.



Immunohistochemical analysis of paraffin-embedded human kidney tissue slide using 66121-1-Ig (Alpha galactosidase A antibody at dilution of 1:50 (under 40x lens). This data was developed using the same antibody clone with 66121-1-PBS in a different storage buffer formulation.



Immunofluorescent analysis of (-20°C Ethanol) fixed HepG2 cells using Alpha Galactosidase A antibody (66121-1-Ig, Clone: 2B2C5) at dilution of 1:800 and CoraLite®488-Conjugated AffiniPure Goat Anti-Mouse IgG(H+L). This data was developed using the same antibody clone with 66121-1-PBS in a different storage buffer formulation.