

For Research Use Only

Kininogen 1 Monoclonal antibody

Catalog Number: 66123-1-Ig



Basic Information

Catalog Number: 66123-1-Ig	GenBank Accession Number: BC060039	Purification Method: Protein G purification
Size: 150ul , Concentration: 1000 ug/ml by Bradford method using BSA as the standard;	GeneID (NCBI): 3827	CloneNo.: 10E8D11
Source: Mouse	UNIPROT ID: P01042	Recommended Dilutions: WB 1:5000-1:20000 IHC 1:50-1:500 IF/ICC 1:200-1:800
Isotype: IgG1	Full Name: kininogen 1	
Immunogen Catalog Number: AG19233	Calculated MW: 644 aa, 72 kDa	
	Observed MW: 68 kDa	

Applications

Tested Applications:
WB, IHC, IF/ICC, ELISA

Species Specificity:
human

Note-IHC: suggested antigen retrieval with **TE buffer pH 9.0; (*) Alternatively, antigen retrieval may be performed with citrate buffer pH 6.0**

Positive Controls:

WB : human heart tissue, human placenta tissue, human plasma tissue

IHC : human breast cancer tissue, human ovary tumor tissue

IF/ICC : HeLa cells,

Background Information

Kininogens are inhibitors of thiol proteases. Kininogen 1 plays important role in Kinin-kallikrein system. This gene is translated into High-molecular weight kininogen (HMWK) and low-molecular weight kininogen (LMWK) after alternative splicing. HMWK is produced by the liver together with prekallikrein. It acts mainly as a cofactor on coagulation and inflammation, and has no intrinsic catalytic activity. LMWK is produced locally by numerous tissues, and secreted together with tissue kallikrein.

Storage

Storage:

Store at -20°C. Stable for one year after shipment.

Storage Buffer:

PBS with 0.02% sodium azide and 50% glycerol, pH7.3

Aliquoting is unnecessary for -20°C storage

*** 20ul sizes contain 0.1% BSA

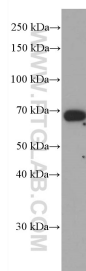
For technical support and original validation data for this product please contact:

T: 1 (888) 4PTGLAB (1-888-478-4522) (toll free in USA), or 1(312) 455-8498 (outside USA)

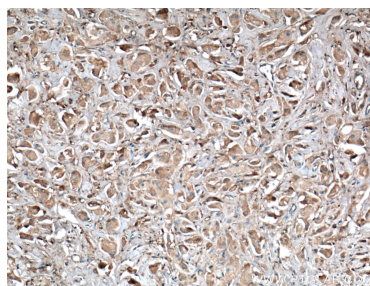
E: proteintech@ptglab.com
W: ptglab.com

This product is exclusively available under Proteintech Group brand and is not available to purchase from any other manufacturer.

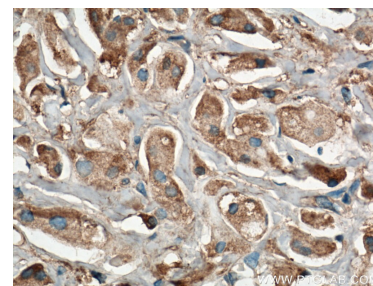
Selected Validation Data



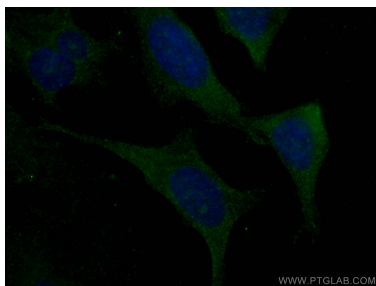
human heart tissue were subjected to SDS PAGE followed by western blot with 66123-1-Ig (Kininogen 1 antibody) at dilution of 1:10000 incubated at room temperature for 1.5 hours.



Immunohistochemical analysis of paraffin-embedded human breast cancer tissue slide using 66123-1-Ig (Kininogen 1 antibody) at dilution of 1:200 (under 10x lens. Heat mediated antigen retrieval with Tris-EDTA buffer (pH 9.0).



Immunohistochemical analysis of paraffin-embedded human breast cancer tissue slide using 66123-1-Ig (Kininogen 1 antibody) at dilution of 1:200 (under 40x lens. Heat mediated antigen retrieval with Tris-EDTA buffer (pH 9.0).



Immunofluorescent analysis of (-20°C Ethanol) fixed HeLa cells using Kininogen 1 antibody (66123-1-Ig, Clone: 10E8D11) at dilution of 1:400 and CoraLite®488-Conjugated Goat Anti-Mouse IgG(H+L).