

For Research Use Only

RBPJ Monoclonal antibody

Catalog Number: 66132-1-Ig

Featured Product

2 Publications



Basic Information

Catalog Number:

66132-1-Ig

Size:

150ul, Concentration: 900 ug/ml by Nanodrop and 453 ug/ml by Bradford method using BSA as the standard;

Source:

Mouse

Isotype:

IgG1

Immunogen Catalog Number:

AG6302

GenBank Accession Number:

BC064976

GeneID (NCBI):

3516

UNIPROT ID:

Q06330

Full Name:

recombination signal binding protein for immunoglobulin kappa J region

Calculated MW:

56 kDa

Observed MW:

60 kDa

Purification Method:

Protein G purification

CloneNo.:

2F12G12

Recommended Dilutions:

WB 1:500-1:2000

Applications

Tested Applications:

WB, ELISA

Cited Applications:

WB, IP

Species Specificity:

human

Cited Species:

human, mouse

Positive Controls:

WB : HepG2 cells, human brain tissue, HeLa cells

Notable Publications

Author	Pubmed ID	Journal	Application
Lipeng Pei	39901144	Mol Med	WB,IP
Jianrong Li	39183444	J Cell Mol Med	WB

Storage

Storage:

Store at -20°C. Stable for one year after shipment.

Storage Buffer:

PBS with 0.02% sodium azide and 50% glycerol pH 7.3.

Aliquoting is unnecessary for -20°C storage

*** 20ul sizes contain 0.1% BSA

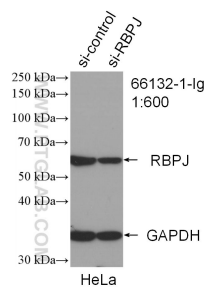
For technical support and original validation data for this product please contact:

T: 1 (888) 4PTGLAB (1-888-478-4522) (toll free in USA), or 1(312) 455-8498 (outside USA)

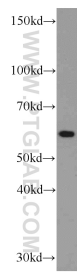
E: proteintech@ptglab.com
W: ptglab.com

This product is exclusively available under Proteintech Group brand and is not available to purchase from any other manufacturer.

Selected Validation Data



WB result of RBPJ antibody (66132-1-Ig; 1:600; incubated at room temperature for 1.5 hours) with sh-Control and sh-RBPJ transfected HeLa cells.



HepG2 cells were subjected to SDS PAGE followed by western blot with 66132-1-Ig (RBPJ antibody) at dilution of 1:1000 incubated at room temperature for 1.5 hours.