

For Research Use Only

Amylase Alpha Monoclonal antibody

Catalog Number: 66133-1-Ig **4 Publications**



Basic Information

Catalog Number: 66133-1-Ig	GenBank Accession Number: BC007060	Purification Method: Protein A purification
Size: 150ul , Concentration: 1100 ug/ml by Nanodrop and 793 ug/ml by Bradford method using BSA as the standard;	GeneID (NCBI): 279	CloneNo.: 2F1G8
Source: Mouse	UNIPROT ID: P04746	Recommended Dilutions: WB 1:1000-1:4000 IHC 1:20-1:200 IF/ICC 1:600-1:2400
Isotype: IgG2b	Full Name: amylase, alpha 2A (pancreatic)	
Immunogen Catalog Number: AG8819	Calculated MW: 511 aa, 58 kDa	
	Observed MW: 58 kDa	

Applications

Tested Applications: WB, IHC, IF/ICC, ELISA	Positive Controls:
Cited Applications: WB, IHC, IF	WB : human saliva, tissue, pig pancreas tissue, rat pancreas tissue
Species Specificity: human, rat, pig	IHC : human pancreas cancer tissue,
Cited Species: human, pig	IF/ICC : BxPC-3 cells,
Note-IHC: suggested antigen retrieval with TE buffer pH 9.0; (*) Alternatively, antigen retrieval may be performed with citrate buffer pH 6.0	

Background Information

The complete human amylase gene contains five intact genes: two pancreatic genes (AMY2A and AMY2B) and three salivary genes (AMY1A, AMY1B, and AMY1C). AMY2A (Pancreatic alpha-amylase) is also named as PA and is a 56 kDa protein consisting of 496 amino acids in a single polypeptide chain, folded into three domains (PMID:10657258). It has a hydrolase activity acting on glycosyl bonds. AMY2A and AMY2B transcripts are present in the human pancreas but not in the parotid salivary gland, while AMY1 transcripts are present in the parotid gland but not in the pancreas (PMID:1692956). This antibody can recognize amylase alpha.

Notable Publications

Author	Pubmed ID	Journal	Application
Yusuke Kuroda	25352717	J Toxicol Pathol	IHC
Yuuki Shichi	36105614	Biochem Biophys Rep	IHC
Kejun Wang	38906844	J Proteome Res	WB

Storage

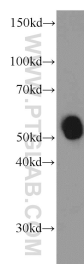
Storage:
Store at -20°C. Stable for one year after shipment.
Storage Buffer:
PBS with 0.02% sodium azide and 50% glycerol pH 7.3.
Aliquoting is unnecessary for -20°C storage

*** 20ul sizes contain 0.1% BSA

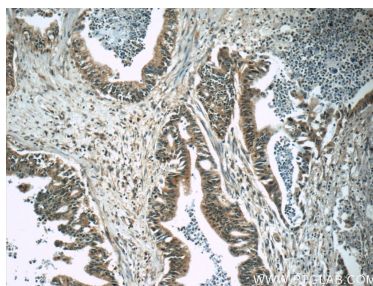
For technical support and original validation data for this product please contact:
T: 1 (888) 4PTGLAB (1-888-478-4522) (toll free in USA), or 1(312) 455-8498 (outside USA)
E: proteintech@ptglab.com
W: ptglab.com

This product is exclusively available under Proteintech Group brand and is not available to purchase from any other manufacturer.

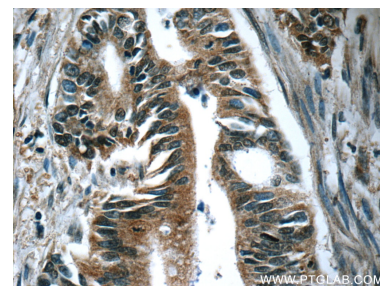
Selected Validation Data



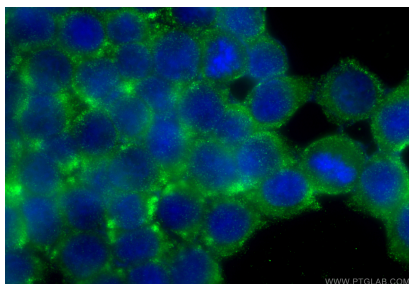
human saliva were subjected to SDS PAGE followed by western blot with 66133-1-Ig (Amylase, alpha antibody) at dilution of 1:2000 incubated at room temperature for 1.5 hours.



Immunohistochemical analysis of paraffin-embedded human pancreas cancer tissue slide using 66133-1-Ig (Amylase, alpha antibody at dilution of 1:50 (under 10x lens).



Immunohistochemical analysis of paraffin-embedded human pancreas cancer tissue slide using 66133-1-Ig (Amylase, alpha antibody at dilution of 1:50 (under 40x lens).



Immunofluorescent analysis of (-20°C Ethanol) fixed BxPC-3 cells using Amylase Alpha antibody (66133-1-Ig, Clone: 2F1G8) at dilution of 1:1200 and Multi-rAb CoraLite® Plus 488-Goat Anti-Mouse Recombinant Secondary Antibody (H+L) (RGAM002).