

For Research Use Only

Amylase Alpha Monoclonal antibody, PBS Only

Catalog Number: 66133-1-PBS



Basic Information

Catalog Number: 66133-1-PBS	GenBank Accession Number: BC007060	Purification Method: Protein A purification
Size: 100ug, Concentration: 1mg/ml by Nanodrop;	GeneID (NCBI): 279	CloneNo.: 2F1G8
Source: Mouse	UNIPROT ID: P04746	
Isotype: IgG2b	Full Name: amylase, alpha 2A (pancreatic)	
Immunogen Catalog Number: AG8819	Calculated MW: 511 aa, 58 kDa	
	Observed MW: 58 kDa	

Applications

Tested Applications:
WB, IHC, IF/ICC, Indirect ELISA

Species Specificity:
human, rat, pig

Background Information

The complete human amylase gene contains five intact genes: two pancreatic genes (AMY2A and AMY2B) and three salivary genes (AMY1A, AMY1B, and AMY1C). AMY2A (Pancreatic alpha-amylase) is also named as PA and is a 56 kDa protein consisting of 496 amino acids in a single polypeptide chain, folded into three domains (PMID:10657258). It has a hydrolase activity acting on glycosyl bonds. AMY2A and AMY2B transcripts are present in the human pancreas but not in the parotid salivary gland, while AMY1 transcripts are present in the parotid gland but not in the pancreas (PMID:1692956). This antibody can recognize amylase alpha.

Storage

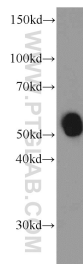
Storage:
Store at -80°C.

Storage Buffer:
PBS Only

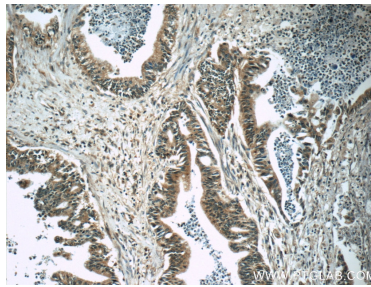
For technical support and original validation data for this product please contact:
T: 1 (888) 4PTGLAB (1-888-478-4522) (toll free in USA), or 1(312) 455-8498 (outside USA)
E: proteintech@ptglab.com
W: ptglab.com

This product is exclusively available under Proteintech Group brand and is not available to purchase from any other manufacturer.

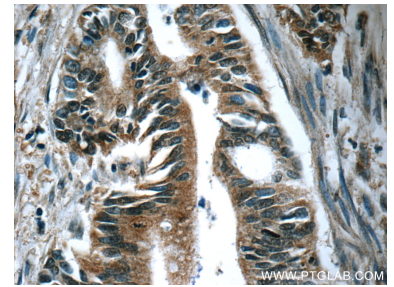
Selected Validation Data



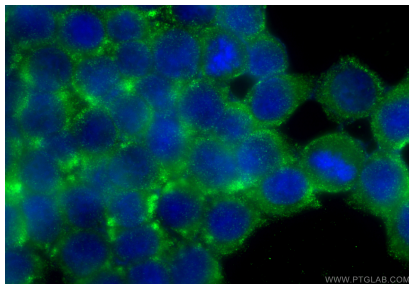
human saliva were subjected to SDS PAGE followed by western blot with 66133-1-Ig (Amylase, alpha antibody) at dilution of 1:2000 incubated at room temperature for 1.5 hours. This data was developed using the same antibody clone with 66133-1-PBS in a different storage buffer formulation.



Immunohistochemical analysis of paraffin-embedded human pancreas cancer tissue slide using 66133-1-Ig (Amylase, alpha antibody) at dilution of 1:50 (under 10x lens). This data was developed using the same antibody clone with 66133-1-PBS in a different storage buffer formulation.



Immunohistochemical analysis of paraffin-embedded human pancreas cancer tissue slide using 66133-1-Ig (Amylase, alpha antibody) at dilution of 1:50 (under 40x lens). This data was developed using the same antibody clone with 66133-1-PBS in a different storage buffer formulation.



Immunofluorescent analysis of (-20°C Ethanol) fixed BxPC-3 cells using Amylase Alpha antibody (66133-1-Ig, Clone: 2F1G8) at dilution of 1:1200 and Multi-rAb CoraLite® Plus 488-Goat Anti-Mouse Recombinant Secondary Antibody (H+L) (RGAM002). This data was developed using the same antibody clone with 66133-1-PBS in a different storage buffer formulation.