

For Research Use Only

GOSR2/Membrin Monoclonal antibody, PBS Only



Catalog Number: 66134-1-PBS

Featured Product

Basic Information

Catalog Number:

66134-1-PBS

Size:

100ug, Concentration: 1 mg/ml by Nanodrop;

Source:

Mouse

Isotype:

IgG2a

Immunogen Catalog Number:

AG21393

GenBank Accession Number:

BC009710

GeneID (NCBI):

9570

UNIPROT ID:

O14653

Full Name:

golgi SNAP receptor complex member 2

Calculated MW:

212 aa, 25 kDa

Observed MW:

25 kDa

Purification Method:

Protein A purification

CloneNo.:

7E7C7

Applications

Tested Applications:

WB, IF, IHC, Indirect ELISA

Species Specificity:

human, rat

Background Information

Golgi SNAP receptor complex member 2 (GOSR2), also known as GS27 or Membrin, is a member of the soluble NSF attachment protein receptor (SNARE) family of vesicle docking proteins. GOSR2 is localized in Golgi apparatus. It is involved in transport of proteins from the cis/medial-Golgi to the trans-Golgi network.

Storage

Storage:

Store at -80°C.

Storage Buffer:

PBS Only

For technical support and original validation data for this product please contact:

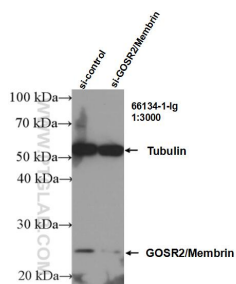
T: 1 (888) 4PTGLAB (1-888-478-4522) (toll free in USA), or 1(312) 455-8498 (outside USA)

E: proteintech@ptglab.com

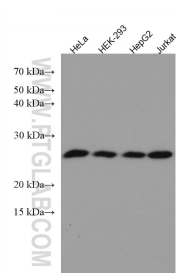
W: ptglab.com

This product is exclusively available under Proteintech Group brand and is not available to purchase from any other manufacturer.

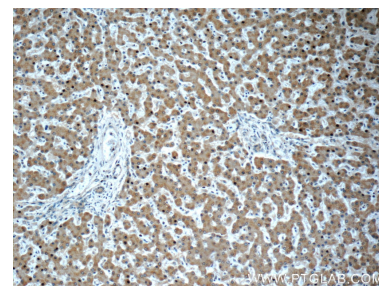
Selected Validation Data



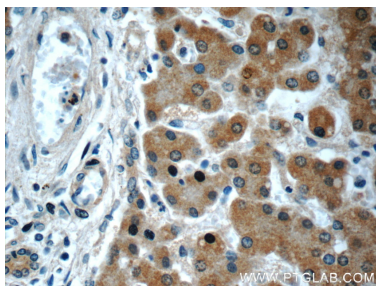
WB result of GOSR2/Membrin antibody (66134-1-Ig; 1:3000; incubated at room temperature for 1.5 hours) with sh-Control and sh-GOSR2/Membrin transfected Jurkat cells. This data was developed using the same antibody clone with 66134-1-PBS in a different storage buffer formulation.



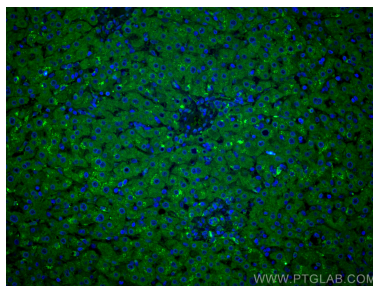
Various lysates were subjected to SDS PAGE followed by western blot with 66134-1-Ig (GOSR2/Membrin antibody) at dilution of 1:3000 incubated at room temperature for 1.5 hours. This data was developed using the same antibody clone with 66134-1-PBS in a different storage buffer formulation.



Immunohistochemical analysis of paraffin-embedded human liver slide using 66134-1-Ig (GOSR2/Membrin antibody at dilution of 1:50. This data was developed using the same antibody clone with 66134-1-PBS in a different storage buffer formulation.



Immunohistochemical analysis of paraffin-embedded human liver slide using 66134-1-Ig (GOSR2/Membrin antibody at dilution of 1:50. This data was developed using the same antibody clone with 66134-1-PBS in a different storage buffer formulation.



Immunofluorescent analysis of (4% PFA) fixed human liver cancer tissue using GOSR2/Membrin antibody (66134-1-Ig, Clone: 7E7C7) at dilution of 1:400 and CoraLite®488-Conjugated AffiniPure Goat Anti-Mouse IgG(H+L). This data was developed using the same antibody clone with 66134-1-PBS in a different storage buffer formulation.